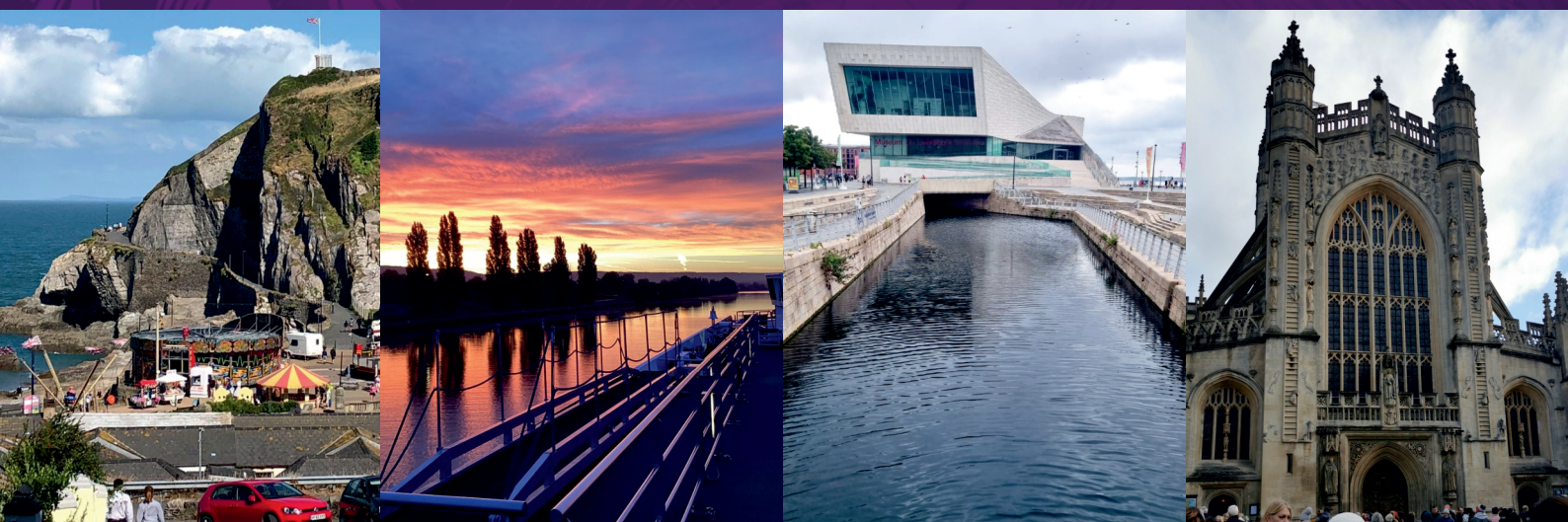


Coaches Ltd.

# Brent Thomas



## COACH HOLIDAYS



2024



## Dear Traveller

Thank you for being our valued customers, we appreciate that there are lots of choices and you choose to book with us. This allows us to continue to provide a varied, professional and exciting brochure.

There are destinations and hotels to suits everyone's budget and diary.

We hope to see you in 2024

Kind regards

From us all at Brent Thomas Coaches

## Why Travel With Brent Thomas Coaches?

You can enjoy executive coach travel throughout your holiday in one of our modern fleet of coaches with professional, experienced and friendly drivers. At extremely busy times we may have to hire in coaches from other companies which will be of a similar standard with experienced drivers.

All our UK hotels are carefully chosen and inspected by either a member of staff or a reputable agent with whom we deal and offer en-suite accommodation, dinner, bed and breakfast. Our London weekend breaks and some city breaks may only offer bed & breakfast. Our accommodation ranges from 2\* budget hotels which in our opinion offer value for money to 4\* luxury hotels as our aim is to offer our customers a wide choice of holidays that suit all tastes and budgets. To assist with costs, overnight stay hotel meals are designed to cater for a large group eating together at the same time, choices are basic and limited. This may not be suitable for everyone. Most hotels would have an alternative option via a bar menu or room service to purchase at your own expense should the inclusive meal not meet your personal preference.

We believe that we probably operate one of the best feeder systems in the area where we can guarantee that you will not be sitting on the coach picking up throughout the valleys and villages for over 2 hours. We send mini buses to different departure points to meet the main coach at a central point and we aim to have you on your tour coach within 1 hour from being picked up. Pick up points are refined every year Can we please remind our customers to be at their pick up point on time and to be aware that a taxi or mini bus from a private company may pick you up as it is not always possible to send a Brent Thomas Coach to every departure point.

We can tailor make holidays for groups and organisations to suit your requirements. Please do not hesitate to contact us if you are looking for a specific holiday, which is not advertised in our brochure. Our representatives will be pleased to come and visit your group to discuss your requirements for your proposed tour and offer information and advice so that you can get the most from your holiday.

Evening entertainment is provided most nights in a lot of our seaside hotels, if numbers but we cannot guarantee live music every night as this is at the discretion of the hotel management.

Excursions are included at no extra charge but may be changed at our discretion due to weather and seasonal events

These will be as follows:

2 - 3 day tours	No excursions
4 day tours	1 half day excursion
5 day tours	2 half day excursions
8 day tours	3 half day excursions

We ask our customers to notify the office in advance if they wish to bring a wheelchair/walker with them on their holiday. Due to the high demand of customers bringing scooters with them in the past we recommend that they are hired at the resort as the luggage space on the coaches is very limited. Micro scooters that fold into their own case and can be lifted by the customer can only be accepted if they have been approved at the time of booking. This will need to be printed on your confirmation and must be requested each holiday. We cannot accept class 3 scooters as these are too large and heavy to lift. Please be aware if a feeder vehicle is your transport to the main coach there is restricted luggage room and therefore a scooter may not be able to be accepted.

We remind our customers how important it is to take out insurance for their holiday in case of any unforeseen circumstances.

## Please Remember

Can we please remind all our customers of our luggage policy. Please bring one small/medium sized suitcase per person, not one large suitcase per couple. We limit the size of the suitcases due to luggage space available on the coach and due to health and safety regulations they can be weighing no more than 20kg for our drivers and hotel staff to handle.



**Small Suitcase**  
**Approx Size 18"**

**Medium Suitcase**  
**Approx Size 24"**

**Please bring either a small or medium size suitcase per person weighing no more than 20kg**

## Holiday Insurance

We remind you that your accommodation booking is a legally binding contract. In the event of cancellation we are entitled to retain your deposit and ask for a further payment to compensate us for our loss. For your protection we suggest you take advantage of holiday cancellation insurance. We regret cancellations for whatever reason may be chargeable. We therefore recommend for peace of mind you take out cancellation insurance through an intermediary who is authorised and regulated by the Financial Services Authority.

### SCALE OF CANCELLATION CHARGES

Period before departure within which written cancellation of holiday is received	Amount of cancellation charge as a %
More than 42 days	Deposit
42 - 29 days	50%
28 - 15 days	85%
14 - 1 days	100%
Departure date or later including voluntary termination whilst on holiday	100%

## How To Book Please Read Carefully

Please check availability by telephoning or visiting one of our shops/market stalls listed below.

After your initial enquiry and verbal room reservation, we will hold the room for a maximum of 7 days. At the end of that period the room will automatically be released for re-sale. A deposit of £40 per person must be paid at the time of booking. We require a deposit of £150 - £250 per person for all European and Jersey tours. European tours also require a second deposit before final balance is due. Please note that deposits are non-refundable and non transferrable. Please also note that this brochure should be read in conjunction with our full terms and conditions enclosed. Further copies can be obtained from our office.

Carefully choose a departure point nearest to your home from the list in the brochure. Please note once a departure point has been chosen, any changes must be authorised by BTC's Ltd office only and must be made in writing at least 14 days before the departure date (still may not be guaranteed).

Brochure Accuracy - We take every care to ensure at the time of going to press the details in this brochure were accurate regarding holiday prices. Additional charges such as single room and sea view supplements which are beyond BTC's control need to be checked at the time of booking. Special event dates including shows and Christmas Markets are beyond our control and we will endeavour to notify customers of any changes as soon as we are aware.

We accept cash or cheques at all our shops and market stalls. You can also make online bank payments.

Please make all cheques payable to **Brent Thomas Coaches Ltd** and send them to:

**Brent Thomas Coaches Ltd**  
**Foundry Road Industrial Estate, Tonypanyd**  
**Rhondda Cynon Taf. CF40 2XD**

**You can pay at one of our shops/market stalls:**  
**Stall 74A Pontypridd Indoor Market, Pontypridd**  
**Unit 6, Newport Arcade, High Street, Newport**  
**Brent Thomas, The Coach Stop, Aberdare Indoor Market**  
**Brent Thomas, 13 Glebeland St, Merthyr**



## New Departure Points for 2024

### MAERDY VALLEY

Maerdy Hall, Con Club & Cemetery  
Ferndale North Road, Job Centre & Ferndale Clinic  
Tylorstown Duke of York, Post Office & The Jubilee  
Pontygwaith The Surgery & The Cosmo  
Wattstown Days Newsagents  
Ynshir Hall, The Eagle & The Baden  
Porth Depot

### TREHERBERT VALLEY

Treorchy Post Office  
Pentre The Griffin & The Council Offices  
Ton Pentre Freezer Centre  
Gelli Weavers Garage & Post Office  
Ystrad Sandy Bank & Post Office  
Llwynypia Triple Crown garage & Hospital  
Tonypandy Square & The Co-Op  
Penygraig Labour Club  
Porth Depot & Square (Oakdale Chemist)  
Llwyncellyn Spar

### HOPKINSTOWN

Hopkinstown The Hollybush & Spar

### CYNON VALLEY

Aberdare Bus Station (by the toilets)  
Mountain Ash Railway Station  
Miskin The New Bridge  
Navigation Pub, Abercynon

### MERTHYR TYDFIL

Merthyr Tydfil Castle Hotel  
Pentrebach Bus Stop by Sixty Sixty Coach Depot  
Nelson Bus Station

### TAFF'S WELL

Veolia  
McDonalds, Nantgarw

### BLACKWOOD AREA

Blackwood Bus Station  
Bargoed Bus Station  
Ystrad Mynach Bus Station  
Caerphilly Castle Court outside Post Office

**IF NUMBERS ARE LOW, WE RESERVE THE RIGHT TO CHANGE A PICK UP POINT DUE TO OPERATIONAL DIFFICULTIES.**

## New Departure Points for 2024

### PONTYPRIDD AREA

Caddies  
Municipal Buildings  
Park View  
Ynysybwl The Cemetery, Robertstown & New Road  
Coed Y Cwm Bus Stop Main Road  
Glyncoch Bus Stop Main Road  
Cilfynydd The Commercial & The Royal Oak  
Broadway Bowns & Bus Stop by the shops  
Rhydyfelin Malvern Tyres & Glantaff School  
Rhydyfelin Ebenezer & The Duffryn  
Hawthorn Ambulance Station & Hawthorn Inn  
Hawthorn Enterprise Foundry Hill  
Upper Boat Do It All (Dunelm)

### TONTEG AREA

Llantwit Farde The Crown & New Inn  
Tonteg Road Runner, The Hollybush & Fina Garage

### LLANTRISANT AREA

Tonyrefail Astra Video Shop  
Coed Ely Club  
Talbot Green Bus Station  
Llantrisant Penny Farthing & The Pet Shop  
Beddau P.O. Welfare, Ty Nant & The Woodlands

### CARDIFF

Tongwynlais Church & Holiday Inn  
Cardiff Gate Services

### NEWPORT

Outside Admiral Insurance-opposite Railway Station  
Magor Services Coach Park

### (ON TOURS 4 DAYS AND OVER)

#### BLAENAU GWENT

Tredegar Lidl Bus Stop  
Rhymney Library  
Ebbw Vale Bus Station  
Brynmawr Bus Station

**PLEASE NOTE ONCE A DEPARTURE POINT HAS BEEN CHOSEN, ANY ALTERATIONS MUST BE AUTHORISED BY BTC'S OFFICE AND MUST BE CONFIRMED IN WRITING AT LEAST 14 DAYS PRIOR TO THE DEPARTURE DATE.**

**THERE WILL BE A £15 ADMIN CHARGE.**





## Departure Dates

Date	Destination	Days	Page No.
<b>January</b>			
6th	Somerset Shopping Weekend	2	43
8th	Paignton	5	37
12th	Torquay	4	50
13th	Somerset Shopping Weekend	2	43
15th	Torquay	5	49+50
19th	Torquay	3	51
22nd	Torquay	5	49+50
26th	Torquay	3	51
29th	Torquay	5	49
29th	Eastbourne	5	20
29th	Llandudno	5	32
29th	Newquay	5	33

## February

2nd	Weymouth	3	56
2nd	Torquay	3	51
5th	Torquay	5	49+50
9th	Eastbourne	4	19
9th	Torquay	4	49
12th	Weymouth	5	56
12th	North Devon Coast	5	34
12th	Paignton	5	36



12th	Harrogate	5	24
16th	Newquay	5	33
19th	Eastbourne	5	19
19th	Mold	5	21
19th	Liverpool	5	30
22nd	Ireland 6 Nations	4	7
23rd	Weston Super Mare	4	54
25th	Torquay	2	51
26th	South Coast Explorer	5	47
26th	Exmouth	5	22
26th	Eastbourne	5	20
26th	Torquay	5	49+50

## March

1st	Eastbourne	4	19
1st	Torquay	3	49
2nd	Scotland	6	42
3rd	Torquay	2	51
4th	Llandudno	5	31+32
4th	Torquay	5	50
4th	Eastbourne	5	19
8th	Torquay	4	51
9th	Torquay	3	49
11th	Weymouth	5	56
11th	Coast & Country	5	13
11th	Newquay	5	33
15th	Paignton	4	37
15th	Torquay	4	50
17th	Isle of Wight	6	27
18th	Paignton	5	36
18th	Scarborough	5	38
18th	Torquay	5	49
18th	Llandudno	5	32
20th	Falmouth	5	23
23rd	Weymouth	2	56
23rd	Sidmouth	5	38

24th	Torquay	2	51
25th	Yorkshire Highlights	5	57
25th	Isle of Wight	5	27
25th	Weston Super Mare	5	55
25th	Cumbria - Lake District	5	29
28th	Eastbourne	5	19
29th	Torquay	4	49
30th	Gloucester & Worcester	2	43+52

## Departure Dates

Date	Destination	Days	Page No.
<b>April</b>			
1st	North Devon Coast	5	34
1st	Paignton	5	36
1st	Torquay	5	49
5th	Weymouth	4	56
5th	Torquay	4	51
8th	Blackpool	5	11
8th	Paignton	5	37
8th	Lytham St Annes	5	29
8th	Weston Super Mare	5	55
8th	Coast & Country	5	13
14th	Scotland Fort William	7	39
15th	Isle of Wight	5	27
15th	Pontins Sand Bay	5	35
15th	Exmouth	5	22
15th	Babbacombe	5	9
17th	Newquay	5	33
18th	Jersey	6	28
19th	Torquay	4	49
19th	Babbacombe	4	9
20th	Exmouth	5	22
22nd	Torquay	5	50
22nd	Warners Cricket St Thomas	5	53
22nd	Torquay	5	50
29th	Llandudno	5	31+32
29th	Eastbourne	5	19
29th	Falmouth	5	23
49th	Torquay	5	49

## May

4th	Torquay	2	49
5th	Scarborough	7	38
6th	Weymouth	5	56
6th	Isle of Wight	5	27
6th	Coast & Country	5	13
10th	Torquay	3	49
11th	Torquay	2	49
13th	Epic North Wales	5	21
13th	Weston Super Mare	5	55
13th	Weymouth	5	56
13th	Sidmouth	5	45
13th	Torquay	5	49
17th	Weston Super Mare	4	54
17th	Babbacombe	4	9
20th	Warners Norton Grange	5	53
20th	Great Yarmouth	5	23
20th	Torquay	5	50
20th	Skegness	5	45
20th	Exmouth	5	22



## Departure Dates

Date	Destination	Days	Page No.
<b>May</b>			
25th	Weymouth	2	56
25th	Call the Midwife	2	12
27th	Paignton	5	36
27th	Pontins Sand Bay	5	35
28th	Eastbourne	5	19
29th	South Coast Explorer	5	47
31st	Babbacombe	4	9

## June

3rd	Weymouth	5	56
3rd	Weston	5	55
3rd	Torquay	5	49+50
5th	Steaming through Snowdonia	5	48
7th	Weston	4	54
7th	Paignton	4	37
8th	Isle of Wight	5	27
10th	Isle of Wight	5	27
10th	Weymouth	5	56
13th	Cumbria - Lake District	5	29
14th	Torquay	3	49
15th	Torquay	2	49
17th	Paignton	5	37
17th	Pontins Sand Bay	5	35
17th	Torquay	5	50
17th	Llandudno	5	32
17th	Barmouth	5	10
20th	Paignton	8	36
21st	Weymouth	4	56
21st	Weston Super Mare	4	54
24th	Warners Bodelwyddan	5	52
24th	Torquay	5	49+50
24th	Llandudno	5	32
28th	Torquay	4	50
30th	Falmouth	7	23



## July

1st	Blackpool	5	11
1st	Weymouth	5	56
1st	Lytham St Annes	5	29
1st	Bournemouth	5	13
6th	Eastbourne	8	19
6th	Torquay	2	49
8th	Weymouth	5	56
8th	Isle of Wight	5	27
8th	Torquay	5	49+50
12th	Weston Super Mare	4	54
12th	Torquay	3	49
13th	Torquay	2	49
14th	Jersey	7	28
15th	North Devon Coast	5	34
15th	Great Yarmouth	5	23
15th	Llandudno	5	31
15th	North Devon Coast	5	34
15th	Babbacombe	5	9
17th	Ilfracombe	5	25
20th	Scotland	6	42
20th	Llandudno	5	32

## Departure Dates

Date	Destination	Days	Page No.
<b>July</b>			
21st	Scotland - Scotch Wilds....	7	41
22nd	Llandudno	5	32
22nd	Paignton	5	37
22nd	Torquay	5	49
26th	Torquay	4	50
27th	Torquay	2	49
29th	Newcastle	5	24
29th	Torquay	5	50
29th	Skegness	5	45
29th	Weston Super Mare	5	55



## August

2nd	Torquay	4	50
3rd	Weymouth	8	56
4th	Liverpool - Fabulous Merseyside	5	30
4th	Norfolk	5	8
5th	Weymouth	5	56
5th	Cumbria - Lake District	5	29
5th	Torquay	5	49+50
8th	Cotswolds	5	10
9th	Torquay	3	49
10th	Eastbourne	8	19
11th	Criccieth	7	14
12th	Ireland	5	25
16th	Weston Super Mare	4	54
16th	Pontins Sand Bay	4	35
16th	Babbacombe	4	9
19th	Llandudno	5	32
19th	Isle of Wight	5	27
19th	Weston Super Mare	5	55
19th	Torquay	5	49





## Departure Dates

Date	Destination	Days	Page No.
<b>August</b>			
21st	Exmouth	5	22
26th	Blackpool	5	11
26th	North Devon Coast	5	34
26th	Paignton	5	36
26th	Liverpool	5	30
30th	Torquay	4	49
30th	Babbacombe	4	9
31st	Weymouth	2	56

## September

2nd	Weymouth	5	56
2nd	Eastbourne	6	19
6th	Paignton	4	37
6th	Isle of Wight	5	27
8th	Scotland	7	40
8th	Scarborough	7	38
9th	Isle of Wight	5	27
9th	Great Yarmouth	5	23
9th	Llandudno	5	31
9th	Ireland	5	46
13th	Babbacombe	4	9
14th	Torquay	2	49
16th	Exmouth	5	22
18th	Eastbourne	6	19
18th	Rhone River Cruise	10	44
18th	South Coast Explorer	5	47
20th	Weston Super Mare	4	54



23rd	Weymouth	5	56
23rd	Torquay	5	49+50
23rd	Coast & Country	5	13
27th	Paignton	4	36
27th	Torquay	4	50
28th	Llandudno	5	32
28th	Worcester & Gloucester	2	43+52
30th	Isle of Wight	5	27
30th	Weymouth	5	56
30th	York	5	57
30th	Falmouth	5	23

## October

4th	Torquay	3	49
6th	Isle of Man	6	26
7th	Torquay	5	49
7th	Weston Super Mare	5	55
7th	Warners - Norton Grange	5	53
7th	Jersey	6	28
9th	Ilfracombe	5	25
9th	Torquay	5	49
11th	Babbacombe	4	9
11th	Weston Super Mare	4	54
11th	Torquay	3	49

## Departure Dates

Date	Destination	Days	Page No.
<b>October</b>			
14th	Blackpool	5	11
14th	Torquay	5	50
14th	Torquay	5	50
14th	Liverpool	5	30
14th	Babbacombe	5	9
16th	Exmouth	5	22
18th	Paignton	4	37
18th	Blackpool	4	11
18th	Babbacombe	4	9
18th	Pontins Sand Bay	4	35
18th	Torquay	3	51
21st	Blackpool	5	11
21st	Eastbourne	5	19
21st	Blackpool	5	11
21st	Torquay	5	49
21st	Isle of Wight	5	27
25th	Torquay	3	51
28th	Torquay	5	50
28th	Weymouth	5	56
28th	Paignton	5	36+37
28th	Llandudno	5	31
28th	Tenby	5	48
28th	Skegness	5	45
28th	Sidmouth	5	38

## November

1st	Babbacombe	4	9
4th	North Devon Coast	4	34
4th	Eastbourne	5	19
4th	Newquay	5	33
8th	Weston Super Mare	4	54
8th	Torquay	3	49
8th	Eastbourne	4	20+60
11th	Torquay	5	49+50
11th	Llandudno	5	31
11th	Liverpool	5	30
11th	Sidmouth	5	45
15th	Eastbourne	4	19
15th	Weston Super Mare	4	54
15th	Chester	3	12+60
17th	Manchester	2	59
18th	Blackpool	5	11
18th	Paignton	5	36
18th	Lythan St Annes	5	29
18th	Exmouth	5	22
18th	Coast & Country	5	13
18th	Newquay	5	33
22nd	Weston Super Mare	4	55
22nd	Pontins Sand Bay	4	35
25th	Paignton	5	37
25th	York	5	57
25th	Cumbria - Lake District	5	29
25th	Torquay	5	49+50
25th	Llandudno	5	32
25th	Babbacombe	5	9
29th	Torquay	3	49+60
29th	Weston Super Mare	4	54+60



## Departure Dates

Date	Destination	Days	Page No.
<b>December</b>			
1st	Longleat Festival of Light	2	58+60
1st	German Christmas Markets	5	59
1st	Manchester	2	59+60
2nd	Tenby	5	48
2nd	Newquay	5	33
6th	Paignton	4	37
6th	Torquay	3	49+60
6th	Torquay	4	50+60
6th	Windsor	2	58
7th	Gloucester & Worcester	2	43+52
7th	London	2	58+60
8th	Longleat Festival of Light	2	60
9th	Torquay	5	50+60
9th	Weston Super Mare	5	54
13th	Torquay	3	49
16th	Babbacombe	5	9

## Christmas

23rd	Llandudno	5	31
23rd	Weston Super Mare	5	54
23rd	Torquay	5	49



## Twixmas



27th	Weston Super Mare	4	54
27th	Torquay	4	49

## New Year

29th	Eastbourne	5	19
29th	Skegness	5	45
30th	Weston Super Mare	4	54
30th	North Devon Coast	4	34
30th	Weston Super Mare	4	54+55
30th	Torquay	4	49+50
30th	Weymouth	4	56
30th	Llandudno	5	31



## Gift Vouchers Available

The perfect Christmas present

Ask a member of staff for details

## 6 Nations Ireland v Wales 2024

Our annual rugby event not to be missed - join us for hospitality that is second to none while we're staying in Ireland. With comfortable en-suite accommodation with colour tv and tea/coffee making facilities. The weekend will be at leisure for shopping, sightseeing and watching the match. Please note tickets for the match are not included.

### Departure Date:

February 22nd 4 days £ 360  
Single Supplement £120

### Price includes:

All coach travel/En-suite accommodation  
Return ferry crossings/ Dinner, Bed & Breakfast  
Time at leisure in during the weekend to watch the rugby

## 6 Nations Scotland v Wales 2025

Details of hotel and date to be announced.  
The break will be at leisure for shopping, sightseeing and watching the match. Please note tickets for the match are not included.

Please telephone to add your details to the waiting list.

### Departure Date:

Date to be announced 4 days £TBC  
Single Supplement £TBC

### Price includes:

All coach travel/En-suite accommodation/  
Time at leisure during the weekend to watch the rugby

## A Broad in Norfolk

### Duke's Head Hotel

There can be few more imposing hotels in the east of England than the Dukes Head. Its striking powder-blue façade, a study in Georgian elegance, is as much a part of King's Lynn's Tuesday Market Place as the stalls that have traded here for generations. It's the quintessential market town hotel - a handsome hostelry with history at every turn, restored and restyled for the discerning twenty-first-century traveller. Stay here and you'll join quite a guest list. Political icons; princesses; the who's who of King's Lynn's past - the Dukes Head has played host to them all. Today, period charm meets contemporary chic, spacious rooms envelop you in comfort, and the very best local produce is served - in an acclaimed restaurant and a buzzing new bar. Each of the 80 rooms are not only spacious and relaxing, but also fully equipped, with a comfortable bed, free WiFi, desk area and everything else you need for a relaxing and revitalising stay. There is a lift at the hotel.



### Price Includes:

All coach travel/En-suite accommodation/4 nights  
Dinner, Bed & Breakfast

### Departure Dates

August 4th	5 days	£500
Single Supplement		£100



### Raynham Hall

Embark on a private tour of Raynham Hall, home to the Townshend family for nearly 500 years and lovingly restored and cared for by the people that live and breathe it. Rarely open to the public, hear the stories of a home a century ahead of its time, created in 1619 by Sir Roger Townshend - an untrained, gentleman architect with highly accomplished plans and inspired by architectural innovation. The hall was once home to Charles Townshend, 2nd Viscount Townshend, who was leader of the House of Lords in the 17th Century. The hall is perhaps most known as a haunted



location – being the scene for the most famous ghost photo of all time, The Famous Brown Lady Descending the Staircase, which is known world-wide as irrefutable proof of spirit existence.



### Bure Valley Railway & Mississippi Paddle Boat Cruise

Delight in a nostalgic steam train single journey through the beautiful Bure Valley from Aylsham to Wroxham, on Norfolk's longest narrow-gauge railway, through the unspoilt countryside and idyllic villages of the Norfolk

broads, before embarking on an enlightening cruise on a Mississippi Paddle Steamer, crossing no less than 17 bridges, passing quaint thatched cottages, windmills and ancient churches alongside reed beds rich with the unique local wildlife.



### Langham Glass

Create your own masterpiece at Langham Glass – one of the oldest and most renowned glassmaking businesses in the UK! Get up close to the heat of the furnace and the steel marver with a fascinating live demonstration, and a one-on-one opportunity to make your own coloured tea-light holder. Langham Glass was established 1979 by Master Glassmaker Paul Miller, who is recognised for designing and developing for Wedgwood - many of his animals and paperweights today form a part of a sought-after collection.



## Babbacombe

Babbacombe is situated in the quieter area of Torbay with its own promenade and gardens, enjoying superb coastal views across Lyme Bay, is an ideal location for a relaxing, peaceful break. There are two beaches, a harbour and the historic Babbacombe Railway, one of the few original working funicular railways still in existence today. You will also find the world famous model village here, the perfect opportunity for some miniature photographs.

### The Babbacombe Hotel

Join us at the 80 roomed seafront hotel with en-suite rooms offering friendly and comfortable surroundings with beautiful sea views. The Babbacombe Hotel enjoys a level position directly on the sea front overlooking the famous Babbacombe Downs with far reaching views across Lyme Bay, many of the bedrooms have stunning views and private balconies. All public areas are situated on the ground floor and the hotel has a lift to most bedrooms.

#### Price Includes:

All coach travel/En-suite accommodation/Dinner, Bed&Breakfast/Evening entertainment most nights- except Wed/Excursions

#### Departure Dates

April 19th	4 days	£225	
May 17th	4 days	£280	
May 31st	4 days	£285	
Aug 16th	4 days	£290	
Aug 30th	4 days	£290	
Sep 13th	4 days	£275	
Oct 11th	4 days	£240	
Oct 18th	4 days	£240	
Nov 1st	4 days	£240	T & T
Dec 16th	5 days	£240	T & T
Single Supplement		£5 per night	
Sea View Supplement		£10-£15 per night, per room	
Balcony/Patio Supplement		£15-£20 per night, per room	
Sea View/Balcony/Patio twin & double rooms only			



### The Anchorage Hotel

A warm welcome awaits you at the Anchorage Hotel, set with spacious front and rear gardens and ideally located within the picturesque Cary Park area of Babbacombe. There are 54 en-suite bedrooms with Tv's, tea/coffee making facilities and telephones. The lift services half of the hotel with ground floor rooms available upon request. A buffet style breakfast and 3 course buffet style evening meal can be enjoyed in the restaurant area.

The outdoor heated swimming pool is available from May to September.

#### Price Includes:

All coach travel/En-suite accommodation/Dinner, Bed&Breakfast/Evening entertainment on 2 nights/Excursions

#### Departure Dates

April 15th	5 days	£260	
July 15th	5 days	£320	
Oct 14th	5 days	£270	
Nov 25th	5 days	£260	T & T



**Excursions will be from the following depending on weather and seasonal events.**

Newton Abbott      Exeter      Brixham      Dawlish & Teignmouth

## Barmouth

Barmouth is southern Snowdonia's most popular seaside resort. The town's beach, Abermaw, is west facing with a mixture of sand and some fine shingle. There are some breathtaking views of Cardigan Bay and the picturesque harbour. The town can get busy, a land train runs along the promenade and there are traditional donkey rides, swing boats and amusement arcades, but the beach itself is vast and easily big enough to get away from it all. There is good disabled access to the beach and all leisure amenities, including a full range of shops, cafes and pubs are within a short distance of the beach.

### Min-Y-Mor Hotel

Situated in the picturesque seaside town of Barmouth, lying on the estuary of the River Mawddach and Cardigan Bay, Min y Mor Hotel boasts an enviable location by the sea. Each room at Min y Mor Hotel features a flat-screen TV, tea/coffee making facilities, and en suite bathroom. Scenic sea view rooms are available at a supplement. Guests benefit from free Wi-Fi in public areas, A hearty breakfast is served daily; the restaurant has a varied menu, which includes fish specialities, and local produce is used where possible. The on-site bar has a pool table and a darts board.



#### Price Includes:

All coach travel/En-suite accommodation/Dinner,Bed&Breakfast/Excursions

#### Departure Dates

June 17th                      5 days                      £450

Excursions will be from the following depending on weather and seasonal events.

Dolgellau                      Criccieth                      Porthmadog

## Cotswolds Capers

### Blunsdon House Hotel

The unique, family owned Blunsdon House Hotel is set on spacious private grounds with stunning views across the Vale of Cricklade. This stylish hotel has very high standards, all en-suite bedrooms are tastefully furnished and include television, telephone, hair dryer, internet access, mini bar and tea/coffee making facilities. Leisure facilities include indoor pool, spa, sauna and a 3 par golf course.

#### Price Includes:

All coach travel/En-suite accommodation/Dinner,Bed&Breakfast/Excursions

#### Departure Dates

August 8th                      5 days                      £480  
Single Supplement                      £115

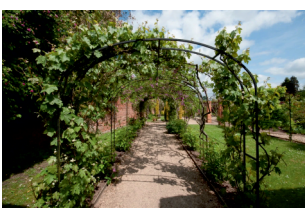


### Berkeley Castle VIP Experience

For almost 900 awe-inspiring years, Berkeley Castle has been home to the Berkeley Family, the only family in England who can trace their ancestry father-to-son back to the Saxon era. From its Norman fortress beginnings, the family has transformed it into a cherished home, surrounded by exquisite gardens and a whimsical butterfly house. An exclusive out-of-hours tour uncovers one of the most remarkable buildings in Britain, delve into its ties with Shakespeare.

### Iford Manor

Uncover a history dating as far back as the Domesday book in a tour led by an on-site expert. Walk in the footsteps of the cast of The Secret Garden and hear how careful restoration and conservation methods maintain the stunning 900 acre estate.



### Spetchley Park Gardens

Step into a botanical wonderland- a timeless Victorian paradise spanning 30 acres. With towering Corsican pines that inspired Edward Elgar, magnificent borders and a serene Horse Pool fringed by magnolias, surprises abound. For over 400 years the family have nurtured Spetchley, amassing a treasure trove of rare plants from across the globe.



## Blackpool

Blackpool is one of Britain's most popular Holiday destinations and is crammed with thrills and excitement making every visit a fun filled adventure and personal yearly favourite for the Thomas family. Visit the iconic Blackpool Tower and experience the spectacular family circus or take a waltz around the magnificent ballroom. During the winter months this lively resort is recognised as one of the greatest shows on earth, the Blackpool illuminations are an electrical extravaganza of dazzling traditional lights and lasers which cover a five mile stretch along the Blackpool seafront.



### Park House Hotel

Returning to our popular, friendly, family run award winning hotel. The 3\* hotel is ideally situated on Blackpool's prestigious North Promenade and is within walking distance of the town centre and all major attractions. You can relax on the luxurious sofas situated in the 80 foot sun lounge overlooking the Irish Sea. Two passenger lifts service all floors.

### Departure Dates

April 8th	5 days	£350	
July 1st	5 days	£370	
August 26th	5 days	£380	
October 14th	5 days	£370	Illuminations
October 18th	4 days	£300	Illuminations
October 21st	5 days	£370	Illuminations
November 18th	5 days	£365	Turkey & Tinsel



### Daish's Hotel - Blackpool

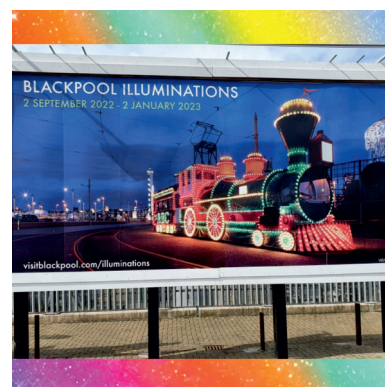
Located in a prime sea front location on Blackpool's North Shore. With 72 en suite bedrooms with flatscreen television, tea and coffee making facilities, many of which have panoramic seaviews of the beach and also the North Pier. Relax in the seaview bar and dine overlooking the sea from the restaurant. Facilities include a comfortable lounge with pool table and bar featuring live entertainment every night. The hotel has a lift.

### Departure Dates

April 8th	5 days	£260	
July 1st	5 days	£270	
August 26th	5 days	£270	
October 21st	5 days	£270	Illuminations
November 18th	5 days	£270	Illuminations
Sea View Supplement	£30 per room		

### Price Includes:

All coach travel/En-suite accommodation/Dinner, Bed & Breakfast/Evening entertainment/Excursions /  
Evening coach tour of the lights on 5 day tours only (not on 4 day tours)



**Excursions will be from the following depending on weather and seasonal events.**

Fleetwood

Lytham St Annes

Ormskirk

## Call the Midwife Tour - Guided Walking Tour at Chatham Historic Dockyard including cream tea



Don't miss out on this fantastic tour, if you're a fan of the hit series and you've been wondering where Call the Midwife is filmed, put yourself in the picture and explore where the real drama happens with a Call the Midwife Official Location Tour at The Historic Dockyard Chatham. Walk in the footsteps of Nurse Trixie Franklin, Sister Julianne and Dr Turner and explore where the real drama happens. The walking tour is led by your very own costumed midwife. Along the tour you'll recognise the cobbled streets and buildings of 'Poplar' plus iconic locations such as the Grosvenor Hotel and

'Chummy's Hill', where Nurse Noakes famously learnt to ride her bike. With a picture book to help trigger your memories, you'll see just how Neal Street Productions transform 400 year old Chatham dockyard into East London. The tour culminates with an exclusive Call the Midwife exhibition containing set, props and costumes. The tour lasts for 90 minutes. This is a walking tour with some uneven surfaces, please ensure you wear comfortable foot wear. It is wheelchair friendly but please advise us in advance if you have mobility issues and we will accommodate you the best we can.

You will also have access to The Historic Dockyard Chatham which for more than four centuries was one of Britain's most important centres of warship building and repair. Over 400 warships were built there, allowing the Royal Navy to dominate the seas of Europe and beyond. Today it is the world's most complete dockyard of the Age of Sail.

### Price Includes:

All coach travel/En-suite accommodation/Dinner,Bed&Breakfast at an overnight stay hotel/Time at leisure in Windsor on Saturday/Entry to Chatham Historic Dockyard / Walking guided tour with costumed midwife/Cream Tea: Fruit Scone, Strawberry Jam, Clotted Cream, Chocolate dipped Strawberry, Pot of tea/Coffee

### Departure Dates

May 25th	2 days	£185
Single Supplement		£39



## Chester City Break

The popular historic city of Chester is filled with elegance and excitement. There is plenty of time to explore at your own leisure the city's greatest treasures from the past including the unique world-famous Row galleries and the most complete city walls in Britain. You can choose from an open top bus or a leisurely cruise along the river.

### Queens Hotel

Hallmark Hotel The Queens within walking distance of the city centre. With over 200 rooms at the hotel reflecting architectural heritage of the building, comfortable rooms are located in the original building and offer all modern amenities including free WIFI, hospitality tray and en-suite bath and shower. Dining in the restaurant will offer a memorable experience and will ensure that you enjoy the best of local and regional foods. The hotel has a lift to all floors.



### Price Includes:

All coach travel/En-suite accommodation/  
Dinner,Bed&Breakfast/Time at leisure in Chester

### Departure Dates

November 15th	3 days	£245
Single Supplement		£130





## Coast & Country - Bournemouth

Bournemouth is a delightful seaside resort with seven miles of clean, award winning golden beaches which offer a plethora of things to do including a mini-train ride taking you from Boscombe Pier westwards towards Alum Chine. You could stroll through the beautiful Lower Gardens or along the Pier. There is a fine shopping centre and plenty of restaurants in the town.

### Durley Dean

A historic Victorian townhouse situated close to the beaches. The hotel's 115 en-suite bedrooms each feature a flat screen TV, tea/coffee making facilities and a work area. Private bathroom with a hairdryer. Relax in the heated indoor swimming pool or enjoy the peace and tranquillity of the sauna and steam room. Serving the best of Classic British cuisine in No.28 Restaurant to residents and visitors alike.



#### Price Includes:

All coach travel/En-suite accommodation/Dinner, Bed&Breakfast / evening entertainment

#### Departure Dates

April 8th	5 days	£320	
July 1st	5 days	£385	
November 18th	5 days	£330	Turkey & Tinsel

### Suncliff Hotel

Located on the seafront at the prestigious East Cliff offering some of the best views. Offering comfortable, traditional 3 star bedrooms with hot drink refreshment tray with tea and coffee making facilities, colour LCD television with Freeview, direct dial telephone, hair dryer, toiletries and en suite facilities. The hotel offers shared leisure facilities across the resorts with the Cumberland and Ocean Beach also.

#### Price Includes:

All coach travel/En-suite accommodation/Dinner, Bed&Breakfast/entertainment most evenings

#### Departure Dates

March 11th	5 days	£270
May 6th	5 days	£350
July 1st	5 days	£380
September 23rd	5 days	£380

Sea View Supplement      £ per room, per night

**Excursions will be from the following depending on weather and seasonal events.**

Weymouth      Poole      Salisbury      Lyndhurst



#### Please Remember

Can we please remind all our customers of our luggage policy. Please bring one small/medium sized suitcase per person, not one large suitcase per couple. We limit the size of the suitcases due to luggage space available on the coach and due to health and safety regulations they can be weighing no more than 20kg for our drivers and hotel staff to handle.

Small Suitcase  
Approx Size 18'

Medium Suitcase  
Approx Size 24'

## Criccieth, Portmeirion & The Welsh Highland Railway

Criccieth lies on the south coast of the Llyn Peninsula, where the edge of Snowdonia National Park meets the sea. The spectacular castle dominates the town and is well worth a visit. It is an area for exploring, with unbeatable scenery and an abundance of attractions.

### George IV Hotel ( Leisureplex Hotels)

The hotel is in an excellent location on the High Street with views of the castle. There are several steps to the front of the hotel with a wheelchair lift from street level into reception. With level access from reception to all ground floor areas. The entertainment room with bar and dance floor where entertainment is provided most evenings is situated on the ground floor. Attractive restaurant, delightful intimate bar and comfortable lounges. Free Wi Fi in public areas. The 79 bedrooms have central heating and bath or shower with tea/coffee making facilities, internal telephone, hair dryer, TV with radio channels  
A large lift serves all floors



### Price Includes:

All coach travel/En-suite accommodation/Dinner, Bed&Breakfast /evening entertainment/excursions

### Departure Dates

August 11th	7 days	£585
Single Supplement		£78
Castle View Supplement		£66 per person



### Itinerary:

#### Caernarfon

Caernarfon is home to Wales' most famous castle and an UNESCO World Heritage Site. The castle is prominent in the skyline for all to see and the town's narrow streets has a choice of shops to browse. The stylish redeveloped waterfront Victoria Dock is a popular yachting marina set alongside the beautiful harbour looking out over the scenic Menai Straits and the Isle of Anglesey.

### The Welsh Highland Railway & Porthmadog

The Welsh Highland Railway runs for 25 miles from Caernarfon, past the foot of Snowdon and the picture postcard village of Beddgelert towards the spectacular Aberglaslyn Pass. Leaving the mountains behind, the railway winds it's way through the streets of Porthmadog before entering the line's terminus at the harbour Station.

### Portmeirion

Situated on a private peninsula overlooking stunning coastal scenery, the Italian Riviera meets rural Wales with a riot of colour and architectural styles at Portmeirion Village. Built by Sir Clough Williams-Ellis, Portmeirion is now one of Wales' most popular tourist destinations. It is well known as the location for the 1960s cult TV series The Prisoner. It comprises a cluster of colour-washed buildings around a central piazza, scenic surroundings and extensive woodlands, two hotels, historic cottages, gift shops, spa & award winning restaurants. It has become known as one of the most successful British architectural projects of the twentieth century.

Using an eco-friendly approach, he designed his architectural vision around a Mediterranean piazza. Endangered buildings and unwanted artefacts from all over the globe were transported and rebuilt to create a nest of loggias, grand porticoes and tiny terracotta-roofed houses, painted in bright colours.

### Snowdon Mountain Railway

Take time to appreciate the fantastic and unique journey on The Heritage Steam Experience. A return journey allows for a 30 minute stop-over before passengers must return on the same train. As you make your way up the mountain, you'll experience awe-inspiring views and uncover the mountain's hidden secrets, from viaducts, waterfalls and gorges to the remnants of abandoned farms, chapels and medieval settlements.





## Day Trips (Limited Departure Points)



We love a day trip and there are so many destinations, special events and markets that we like to visit throughout the year. So you do not miss out we produce up to date flyers regularly as we add extra dates and destinations. These are available from our local stalls, on social media or if you would like to keep up to date via email please use our [aberdare@brentthomascoaches.com](mailto:aberdare@brentthomascoaches.com) address to request daytrips and special offers and extra dates flyers.

Day trips to be paid in full at the time of booking and are non refundable and non transferable due to limited availability. Events may be cancelled which are beyond our control.

### Pick up points for 2024 are as follows....

Tonypandy Square & Co-Op  
Penygraig Labour Club  
Porth Square (Oakdale Chemist)  
Llwyncelyn Spar  
Hopkinstown Hollybush & Spar  
Caddies  
Municipal Buildings  
Park View  
McDonalds Nantgarw  
Newport Admiral Insurance

**We also pick up at the following points with a feeder vehicle that will meet the main coach usually at Park View**

Merthyr Tydfil Castle Hotel  
Aberdare Bus Station  
Mountain Ash Town Hall

## Highclere Castle - 'Downtown Abbey' Day Trip

Highclere Castle is a Grade I listed country house built in 1679 and largely renovated in the 1840s, with a park designed by Capability Brown in the 18th century. It is the country seat of the Earl of Carnarvon, a branch of the Anglo-Welsh Herbert family.

Highclere Castle was the setting for the television series 'Downtown Abbey' it became the most successful British costume drama since 1981. During your visit you will see the State Rooms, Gallery and Bedrooms which were used in the TV series. Experienced professional guides are on hand at various points in the Castle to assist visitors. You can also wander around the Castle gardens at your own leisure. Includes all coach travel and entry.

### Departure Date

July 30th £55

## Murder Mystery Special

Calling all amateur sleuths!! Do you see yourself as Miss Marple, Hercule Poirot or Sherlock Holmes? Well, the West Somerset Railway's Murder Mystery season is a must for all you amateur crime fighters. As you go peacefully about your train journey the actors will be staging a murderous tale for you to solve. Apart from the dastardly doings your steam train ride will also include fish and chips plus a drink served at your seat on the outward journey. There will also be Styles ice cream served as you travel back to Bishops Lydeard. The entertainment begins on the platform (Bishops Lydeard). Passengers should arrive in good time to find their seats and leave the train again for the first scene on the platform. The dress code is 'smart casual' and we encourage you to enter the spirit of the event by dressing in appropriate period costume if you desire! These evenings are not suitable for children. Return time is an estimated 11.30pm (at McDonalds Nantgarw)

July 27th £95





## Day Trips 2024 (Limited Departure Points) Special Events



The Quantock Belle Dining Train operates on the scenic West Somerset Railway between Bishops Lydeard (near Taunton) and Minehead, recreating that wonderful, nostalgic atmosphere of the great days of steam. The Train winds its way through the beautiful Quantock Hills past the ancient port of Watchet and along the coast to Blue Anchor Bay and through to its conclusion at Minehead.

Tuesday 21st May	£80	Fish & Chips plus Alcohol - Cream Tea on return
Tuesday 25th June	£80	Fish & Chips plus Alcohol - Cream Tea on return
Tuesday 20th August	£80	Fish & Chips plus Alcohol - Cream Tea on return
Tuesday 17th September	£80	Fish & Chips plus Alcohol - Cream Tea on return

At the lovely village of Cranmore, near Shepton Mallet, Somerset meet friendly staff and take a relaxing ride on a heritage steam train. The train journey is approximately 35 minutes over a 5 mile round trip. It is one of very few steam railways where you can visit the steam shed and workshop to see restoration in progress by skilled volunteers. Also visit the museum, waiting room and ticket office and the David Shepherd Discovery Centre on the restored second platform which celebrates the history of the railway and the life of the world famous wildlife artist whose vision for the railway made it what it is today.



Sunday 9th June	£70	Mendip Belle Sunday Lunch
Sunday 22nd September	£70	Mendip Belle Sunday Lunch

Join us again as we travel to the multi-award winning South Devon Railway is one of Devon's and the West Country's best loved tourist attractions and is the longest established steam railway in the south west, celebrating over 50 years in preservation. The Polar Express™ with its iconic sleek black steam engine is even inscribed with the '1225' signage to identify its as Santa's own train. Billowing steam all around the station as the Polar Express train pulls in. Get your pyjamas ready to take part in the train ride of your life ! A fully immersive theatrical experience that will delight, amaze and create memories to cherish for years to come. Hold on tight to your golden ticket.

Sunday 24th November	£ TBC	SDR	Polar Express
Saturday 14th December	£ TBC	SDR	Polar Express
Sunday 15th December	£ TBC	SDR	Polar Express
Sunday 22nd December	£ TBC	SDR	Polar Express



\* Payment plans available for Special Events. We accept regular weekly or monthly payments.

**Check out our website for up to date day trips**  
**Day trips to be paid in full at the time of booking and are non refundable and non transferable due to limited availability.**



## Day Trips 2024 (Limited Departure Points)

<b>January</b>	Sat 6th	Birmingham January Sales - £23
<b>February</b>	Thurs 8th Sat 17th Tues 20th	Winchester - £25 Oxford - £25 Mystery - £25
<b>March</b>	Wed 13th Wed 27th Sat 30th Sat 30th	Cirencester via Tetbury - £25 City of Wells & Cadburys Garden Centre - £25 Teignmouth & Dawlish - £25 Weymouth - £25
<b>April</b>	Thurs 18th Sat 27th	Devizes Market & Lacock Village - £24 Hay on Wye & Brecon - £24
<b>May</b>	Sat 4th Sat 4th Tues 7th Tues 21st Sat 25th	Shrewsbury - £25 Windsor - £25 Cotswold Tour - £25 Minehead Rail & Dine - £80 Swanage - £25
<b>June</b>	Sat 1st Sat 1st Sun 9th Wed 19th Wed 19th Tues 25th Sat 29th	English Riviera Air Show - £25 Tenby - £25 Mendip Belle - Sunday Lunch - £70 Royal Leamington Spa - £25 Stratford Upon Avon via Enchanting Evesham - £25 Minehead Rail & Dine - £80 Mystery - £25
<b>July</b>	Sat 6th Sat 6th Wed 24th Sat 27th Sat 27th Tues 30th Tues 30th Wed 31st Wed 31st	Shrewsbury - £25 Sidmouth - £25 Royal Welsh - £25 City of Wells & Cheddar - £25 Murder Mystery Special (adults only) - £95 Highclere Castle (incl entrance) - £55 Weston Super Mare - £25 Tenby - £25 Weymouth - £25



**Check out our website for up to date day trips**

**\* Payment plans available for Special Events.**

**We accept regular weekly or monthly payments.**

**Day trips to be paid in full at the time of booking and are non refundable and non transferable due to limited availability.**



## Day Trips 2024 (Limited Departure Points)

<b>August</b>	Sat 10th	Teignmouth & Dawlish - £25
	Wed 14th	Torquay or Paignton - £25
	Wed 14th	Bath - £25
	Tues 20th	Minehead Rail & Dine - £80
	Sat 24th	Bournemouth - £25
	Sat 24th	Lyme Regis, The Pearl of Dorset - £25
	Mon 26th	Bank Holiday - Weston Super Mare - £25
	Mon 26th	Bank Holiday - Weymouth - £25
	Sat 31st	Minehead - £25
<b>September</b>	Tues 3rd	Salisbury - £25
	Tues 3rd	Stratford Upon Avon via Enchanting Evesham - £25
	Thurs 5th	Hereford & Labels - £24
	Tues 17th	Cotswold Tour - £25
	Tues 17th	Minehead Rail & Dine - £80
	Sun 22nd	Mendip Belle - Sunday Lunch - £70
	Thurs 26th	Oxford - £25
	Sat 28th	Cirencester via Tetbury - £25
	Sat 28th	Porthcawl - Elvis Festival - £21
<b>October</b>	Sat 5th	City of Plymouth - £25
<b>November</b>	Sat 16th	Bristol or Bath Christmas Shopping - £26
	Sat 16th	Gloucester Quays Xmas Shopper - £26
	Sun 24th	Bath Xmas Market - £26
	Sun 24th	Bristol Xmas Market - £26
	Sun 24th	Winchester Xmas Market - £25
	Sat 30th	Cirencester Xmas Market - £24
<b>December</b>	Wed 4th	Bath Xmas Market - £26
	Wed 4th	Bristol Xmas Market - £26
	Thurs 5th	Taunton Xmas Shopping & Craft Fayre - £26
	Sat 7th	Worcester Fayre - £26
	Sat 7th	Birmingham Xmas Market - £25
	Sat 7th	Stratford Upon Avon Victorian Market - £25
	Sun 8th	Worcester Fayre - £26
	Thurs 12th	Exeter Christmas Market - £25
	Sat 14th	London Xmas Shopping - £27
	Sat 14th	Winchester Xmas Market - £25
	Sat 14th	Polar Express - £ TBC
	Sun 15th	Birmingham & Primark Xmas Shopping - £25
	Sun 15th	Polar Express - £ TBC
	Fri 20th	Polar Express - £ TBC



**Check out our website for up to date day trips**

**\* Payment plans available for Special Events.**

**We accept regular weekly or monthly payments.**

**Day trips to be paid in full at the  
time of booking and are non  
refundable and non transferable  
due to limited availability.**





## Eastbourne

Picturesquely set at the foot of the Sussex downs, the elegant traditional seaside resort of Eastbourne has five miles of unspoilt beaches. It's three tiered seafront promenade is bordered by exquisite floral garden displays and stylish hotels. Eastbourne is one of the few resorts which retains a splendid bandstand where concerts are regularly held during the season. The town offers excellent shopping with high street names at the Arndale Centre and Terminus Road where quirky and unique independent shops are found along the colourful Seaside Road.

### Haddon Hall Hotel

Enviably situated at the seafront end of the Devonshire Place, a broad street lined avenue which links the main promenade with the town



centre you are centrally situated to make the most of your stay in

Eastbourne. The popular hotel offers a relaxed atmosphere with efficient service. Haddon's Hall reputation for excellent food has been well known over the years with the head chef producing traditional English cuisine with modern variations for over twenty years. The en-suite accommodation includes colour television and tea/coffee making facilities. There is a lift to all floors.

### Price Includes:

All coach travel/En-suite accommodation/Dinner, Bed&Breakfast /Evening entertainment/Excursions/ Bar Promotions on tours only which are noted (terms&conditions apply)

### Departure Dates

February 9th	4 days	£180	Bar Promo
February 19th	5 days	£240	Bar Promo
March 1st	4 days	£190	Bar Promo
March 4th	5 days	£250	Bar Promo
March 28th	5 days	£350	Easter Wknd
April 29th	5 days	£320	
May 28th	5 days	£350	
July 6th	8 days	£550	
August 10th	8 days	£570	
September 2nd	6 days	£390	
September 18th	6 days	£390	
October 21st	5 days	£350	Turkey & Tinsel
November 4th	5 days	£340	Turkey & Tinsel
November 15th	4 days	£290	Turkey & Tinsel
December 29th	5 days	£520	New Year



### Excursions will be from the following depending on weather and seasonal events.

Bexhill on Sea      Worthing      Brighton      Hastings

## Holiday Insurance

Reminder: your accommodation booking is a legally binding contract. In the event of cancellation we are entitled to retain your deposit and ask for a further payment to compensate us for our loss. For your protection we suggest you take advantage of holiday cancellation insurance. We regret cancellations for whatever reason may be chargeable. We therefore recommend for peace of mind you take out cancellation insurance through an intermediary who is authorised and regulated by the Financial Services Authority.

### SCALE OF CANCELLATION CHARGES

Period before departure within which written cancellation of holiday is received	Amount of cancellation charge as a %
More than 42 days	Deposit
42 - 29 days	50%
28 - 15 days	85%
14 - 1 days	100%
Departure date or later including voluntary termination whilst on holiday	100%

## Eastbourne (continued)



### Queens Hotel (Leisureplex Hotels)

Located in Eastbourne's most central and lively location directly overlooking the pier. Superb Princess Suite with large dance floor, bar and entertainment most evenings. It has an attractive sun lounge with outstanding views of the sea and the pier. The restaurant seats over 180 guests. All 125 en-suite bedrooms have tea/coffee making facilities, internal telephone, hairdryer and Freeview television with radio channels. There are no ground floor rooms but two lifts serve all bedrooms.

#### Price Includes:

All coach travel/En-suite accommodation/  
Dinner, Bed & Breakfast /Evening entertainment/  
Excursions/ Spring Break includes 1 free drink with dinner/  
1 Festive themed dinner included in Festive Sparkle



#### Departure Dates

January 29th                      5 days                      £200  
Spring Breakaway incl 1 drink with dinner

February 26th                  5 days                      £240  
Spring Breakaway incl 1 drink with dinner

November 8th                  4 days                      £270  
Festive Sparkle incl 1 festive themed lunch

Single Supplement    £0 to £27 depending on date  
Sea View Supplement £18-24 per person depending on date

#### Excursions will be from the following depending on weather and seasonal events.

Bexhill on Sea                      Worthing                      Brighton                      Hastings



#### Please Remember

Can we please remind all our customers of our luggage policy. Please bring one small/medium sized suitcase per person, not one large suitcase per couple. We limit the size of the suitcases due to luggage space available on the coach and due to health and safety regulations they can be weighing no more than 20kg for our drivers and hotel staff to handle.



Small Suitcase  
Approx Size 18"

Medium Suitcase  
Approx Size 24"





## Epic North Wales



### Royal Victoria Hotel

The Royal Victoria Hotel is uniquely located close to Llanberis, at the foot of Snowdon, within 30 acres of gardens and woodlands, which include the historic castle of Dolbadarn. Being cradled between two lakes Llyn Padarn and Llyn Peris as well as the Welsh mountains our location is quite simply breathtaking, and the Snowdon Mountain Railway is right opposite! A beautiful hotel with well-maintained original period Art-Deco features, particularly the stained glass windows throughout the hotel. The 104 fully equipped ensuite bedrooms at The Royal Victoria Hotel are

designed to offer you somewhere comfortable to relax.

### Price Includes:

All coach travel/En-suite accommodation/Dinner, Bed & Breakfast /Excursions

### Departure Dates

May 13th 5 days £510

**Welsh Highland Railway** - Enjoy a single journey from Caernarfon to Beddgelert, sit back and enjoy the view as you snake around impossible bends and climb steep gradients on the UK's longest heritage railway.



**The Ffestiniog Railway** - Single journey from Porthmadog to Blaenau Ffestiniog to chug past glorious coastlines, ancient oak woodlands, mountains, rivers and castles. The delightful harbour, rolling peaks and daringly deep troughs lead to the slate quarry town Blaenau Ffestiniog.



**Portmerion Village & Gardens** - A collection of colourful buildings with a heavy Italian influence, the weird and wonderful seaside village is more like a stage set than an actual village.

**Halen Mon Anglesey Pure Sea Salt - Guided Tour** - Go behind the scenes with a trained guide to get a true taste of the culinary Welsh 'gold' sea salt.

## Flintshire in Historic Mold

### Beaufort Park Hotel

Set in the attractive North Wales countryside, a friendly and relaxing place to stay within easy reach of North Wales attractions including the ever popular city of Chester, the beautiful Clwydian Mountain Range, Snowdonia national park and the many historic castles of North Wales. With 106 en-suite bedrooms designed with your comfort in mind, direct dial telephone, remote control television, trouser press, hairdryer and hospitality tray. Bedrooms are situated on ground and first floor. (First floor rooms are accessed by one flight of stairs)



### Price Includes:

All coach travel/En-suite accommodation/Dinner, Bed & Breakfast/ Excursions/ 2 night entertainment/Drinks Package/ Tea & coffee and Bara Brith on arrival



### Departure Dates

February 19th  
voucher per night

5 days

£260

Includes 4 drinks

### Excursions

Chester

Wrexham

## Exmouth

Exmouth is the largest town in East Devon, the gateway to the World Jurassic Coast and one of England's oldest seaside resorts. It has two miles of glorious sandy beaches surrounded by views of countryside and a flat promenade to enjoy a relaxing stroll. The Magnolia Centre and Parade mix well with high street shops and the town has an indoor market to be explored amongst the splendid regency architecture

### Ashton Court Hotel

Under new ownership the popular hotel Ashton Court is welcoming some changes for 2023, to take full advantage of the magnificent views of the Exe estuary and the beautiful coastline stretching out towards Torbay, the panoramic garden will have raised seating. Extensive garden development will include a new patio, and racing sail shading with a boules pitch. Refurbishment is planned for the bedrooms, bathrooms, reception area and the bar/lounge area including seating area with tea and coffee facilities for guests. En-suite bedrooms have a colour television, tea/coffee making facilities and the majority of rooms enjoy sea and coastal views. The lift serves all floors but 2 bedrooms are accessed by a short flight of stairs. There is no portage at this hotel.

### Price Includes:

All coach travel/En-suite accommodation/Dinner, Bed & Breakfast /Evening entertainment/Excursions

### Departure Dates

April 15th	5 days	£335
May 20th	4 days	£375
Sep 16th	5 days	£375

Single Supplement £10 per night



### Cavendish Hotel (Leisureplex)

The Cavendish Hotel is wonderfully situated on the level seafront overlooking Exmouth's fine golden sands and only a few minutes walk from the shops. Don't forget to upgrade to a seaview to take advantage of the amazing scenery. All 80 bedrooms are en-suite with tea/coffee making facilities, hair dryer and Freeview television with radio channels. All rooms have a telephone for internal communication. There is a television lounge, quiet lounge with sea views and games room with snooker and darts. The bar lounge has a dance floor and hosts entertainment most evenings. The lift serves most rooms (excluding the 4th floor)

### Price Includes:

All coach travel/En-suite accommodation/Dinner, Bed & Breakfast /Entertainment most evenings/Excursions

### Departure Dates

February 26th	5 days	£230	Spring Breakaway
April 20th	5 days	£300	Spring Breakaway
August 21st	5 days	£380	
October 16th	5 days	£300	
November 18th	5 days	£300	Turkey & Tinsel

Single Supplement	£52 (August date only)
Single Supplement	£36 (October & November date)
Sea View Supplement	£24 - £44 per person
Spring Breakaway includes 1 free drink with dinner	
Turkey & Tinsel includes 1 festive themed lunch	



**Excursions will be from the following depending on weather and seasonal events.**

Exeter                  Sidmouth                  Torquay



## Falmouth

Falmouth, the main resort of the South Cornish Riviera boasts one of the highest average sunshine records in Britain. It's natural harbour is the third largest deep-water harbour in the world with a range of boats from yachts to ocean liners. Located at the southern end of the Fal Estuary, it has beautiful laid out gardens and a Tudor Castle overlooking the bay. The main high street has quaint old shops standing beside famous stores, as you walk along you will catch a glimpse of the colourful harbour through the picturesque alleyways.

### Memblly Hall Hotel

This popular 2\* hotel is situated on the esplanade with spectacular views across the bay. The majority of the en-suite bedrooms have sea views and all rooms are equipped with colour television and hospitality tray. Indoor leisure facilities include a sauna and spa pool. Relax and enjoy the views from the sun lounge. A lift serves all floors.

### Price Includes:

All coach travel/En-suite accommodation/Dinner,Bed&Breakfast /Evening entertainment/Excursions

### Departure Dates

March 20th	5 days	£320
April 29th	5 days	£340
June 30th	7 days	£570
September 30th	5 days	£360



### Excursions

Penzance - Famous for it's flowers and sub-tropical plants and trees found in the town's Morrab Gardens.  
Truro - Cornwall's only city with its gothic revival cathedral.  
St Ives - (7 day tour only) The dazzling jewel in Cornwall's crown with its narrow cobbled streets and fisherman's cottages.

## Great Yarmouth

### Includes a Cruise on the Norfolk Broads

Since the 1760's Great Yarmouth has been a flourishing resort and is still one of the UK's most popular seaside resorts. With over 15 miles of sandy beach, a large shopping centre and two lively piers, there is plenty to do. With wide spacious pavements, lively attractions and bright, modern illuminations, including colourful beach lighting across Central Beach. The seafront has a variety of restaurants and classic seaside cafes, many with outdoor seating areas. The town's shops and department stores surround the Market Place. There's also narrow streets, some of them just 37inches wide in places, which run from the river to the town centre.

### Palm Court Hotel

Opposite the sandy beach the hotel offers comfort and style combined to ensure guests enjoy their stay. There is a lift to all floors and all 70 en-suite bedrooms have colour televisions, direct dial telephone and tea/coffee making facilities. There is free WiFi at the hotel. Choose from the menu where there is traditional British cooking with an interesting twist. Spend time in the indoor heated swimming pool or sit back and relax with your favourite tipple watching the waves from the sun deck.

### Price Includes:

All coach travel/En-suite accommodation/Dinner,Bed&Breakfast /Regular Evening entertainment /Excursions/ Cruise on the Norfolk Broads

### Departure Dates

May 20th	5 days	£410
July 15th	5 days	£430
September 9th	5 days	£415

Sea View Supplement £12 per person per night

### Excursions:

Norwich Wroxham & Broads Cruise



## Gems of Newcastle

The city of Newcastle is split into a few distinct areas that are all a short walk from each other - the Cathedral and Castle occupy the heights that are immediately above the River Tyne and the quaysides which now form one of the biggest attractions in the entire city. Seven bridges all in close proximity to each other span the Tyne Bridge built in 1928, the symbol of the city, it bears a striking resemblance to Sydney Harbour Bridge.



### Caledonian Hotel

Situated in the heart of Jesmond, a chic and leafy area, only 1 mile from Newcastle City Centre. With 91 spacious en-suite bedrooms offering television, tea and coffee making facilities, direct dial telephone, hair dryer and ironing facilities.

#### Price Includes:

All coach travel/En-suite accommodation/Dinner, Bed & Breakfast /Excursions

#### Departure Dates

July 29th      5 days      £320

Single Supplement   £80

#### Excursions

Durham      Beamish The Living Museum



## Harrogate

Harrogate is a Victorian spa town and rural district that contains the medieval city of Ripon, a designated Area of Outstanding Natural Beauty and four charming but very different market towns; Boroughbridge, Knaresborough, Masham and Pateley Bridge. In the heart of Yorkshire, it is a perfect base for a break. Indulge your passions and your senses and visit the Harrogate area for a memorable holiday. With the Yorkshire Dales on the doorstep there is plenty of scope for adventure. The reputation of shops for exquisite retail opportunities is well deserved and the spa heritage is evident to this day with spa treatments new and old available. Yorkshire prides itself on its food and drink, and Harrogate District flies this flag with pride, from its own gin, to the delicious local produce available across the towns. As well as familiar names you will find independent restaurants offering carefully prepared ingredients served to please the eye as well as the appetite.

### Cairn Hotel

This Victorian hotel was built in Harrogate's period as a spa town and is only a 10 minute walk from the town centre. All en-suite bedrooms have tea/coffee making facilities, television and telephone. The hotel has a lift and a spacious lounge/bar. All meals are served buffet style.

#### Price Includes:

All coach travel/En-suite accommodation/Dinner, Bed & Breakfast /Evening entertainment/Excursions/ Spring Luxury Package includes 3 complimentary drinks vouchers per day (maximum of 2 vouchers can be used for alcoholic drinks). Soup & Sandwich lunch on 3 days. Packed Lunch for departure day.



#### Departure Dates

February 12th      5 days      £320      Spring Luxury

Package

Single Supplement   £64

#### Excursions

York      Skipton



## Ilfracombe & North Devon

Ilfracombe is the premier holiday resort in North Devon. It enjoys a setting of rare beauty amongst the breath taking scenery of Exmoor and the North Devon coastline and boasts a range of activities, attractions and events to suit all age groups. The town nestles in the hills and cliffs of Capstone and Hillsborough which overlook the harbour and is a treat for shoppers and fans of Victorian architecture and history. Around the harbour and along the seafront there is a range of souvenir and traditional seaside shops.

### Imperial Hotel (Leisureplex Hotels)

Superbly situated in one of the best positions in Ilfracombe on the level overlooking the Landmark Theatre and sea, near to the shops and a short walk from the harbour. There are four steps to the front of the hotel and although a ramp is available on request the gradient is steep and we advise the ramp should not be used with anybody in a wheelchair. All 104 bedrooms have tea/coffee making facilities, internal telephones, en-suite facilities, hair dryer and TV with radio channels. There is level access from reception to a large quiet TV lounge, cosy bar and entertainment area with dance floor. On the first floor the attractive restaurant can seat 200 people. Central heating throughout the hotel. The lift serves all floors, although the rear wing has a few additional stairs. There is free WiFi in public areas.

### Price Includes:

All coach travel/En-suite accommodation/ Dinner, Bed & Breakfast/ Evening entertainment/ Excursions

### Departure Date

July 17th	5 days	£330
October 9th	5 days	£270
Single Supplement	£36 - £52 per person depending on dates	
Sea View Supplement	£24 - £44 per person depending on dates	



### Excursions will be from the following depending on weather and seasonal events

Barnstaple                      Atlantic Village                      Bideford

## Ireland

From its vibrant city life, to the rural charm of inland towns and villages, to its stunning coastline Waterford has something for everyone. Waterford City, the oldest city in Ireland has a perfect blend of ancient and modern. Its collection of pubs, gourmet restaurants and excellent shops and boutiques, co-exist with medieval city walls, quaintly cobbled back streets and the grandeur of historical buildings still standing proud after more than a thousand years.

### Dooley's Hotel, Waterford

The three-star family run hotel offers guests modern and contemporary conveniences and comforts with a warm welcome and traditional Irish hospitality. 112 en-suite guest rooms that are spacious and beautifully appointed with toiletries, hairdryer, tv, WiFi, telephone, tea and coffee making facilities.



### Price Includes:

All coach travel/Return ferry crossings/En-suite accommodation/ Dinner, Bed & Breakfast/ Excursions



### Departure Date

August 12th	5 days	£550
Single Supplement	£120	

### Excursions

Cork    Kilkenny



## Isle of Man

Always a popular choice so early booking is essential for our once a year visit to the Isle of Man, with an overnight stop on our outward journey to avoid an early morning departure from South Wales to catch the ferry at Heysham.

Set in the Irish Sea, the Isle of Man is a unique destination with over 10,000 years of history. It's famous symbols are the Manx Cat and the island's emblem, the three legs of Man whose meaning is 'whichever way you throw me I stand'. The Isle of Man is blessed with outstanding scenery and a more relaxed way of life. The capital of the island Douglas, is very much the typical Victorian style seaside town with a curving row of impressive buildings arching along the promenade. Douglas is the starting point for the steam and electric railways departing from opposite ends of the Promenade and linked by horse drawn trams which 'clip clop' along the two miles of the promenade - a reminder of days gone by.



### Empress Hotel

A wonderful retreat for all of the family in a beautiful setting overlooking the open seaside. With 104 en suite bedrooms. For dining the Brasserie Restaurant offers an a la carte menu. The Piano Bar is open daily until late, Sky and BT Sports is also available for sports fans. The Hotel has a small gym, sauna and steam room for residents for a small charge.

There is a lift at the hotel although



steps throughout the hotel are unavoidable due to the structure of the building.

### Departure Dates

October 6th	6 days	£585
Sea view twin upgrade available	£94 per person	
Single Supplement	£82	

### Price Includes:

All coach travel/En-suite accommodation/return ferry crossings/1 night dinner, bed&breakfast during outward journey/4 nights dinner, bed&breakfast at the Empress Hotel / excursions

Deposit required £200 per person

Travel insurance details are requested when balance is paid.

Up to date guidelines on travelling to Isle of Man can be found online.

[gov.im/categories/travel-traffic-and-motoring/passports/travel-information/](http://gov.im/categories/travel-traffic-and-motoring/passports/travel-information/)



### Excursions

North Island Circular Tour - stopping first in the village of St John. Visit the fishing port of Peel with the island's cathedral. Ramsey is the second largest town on the island.

Port Erin & Castletown - South of the island is Port Erin a quiet little town. Then onto Castletown one of the oldest towns in the British Isles with narrow streets and small fishing cottages. The medieval Castle Rushen dominates the town and the harbour.

## Isle of Wight

With regular ferry crossings taking just 45 minutes the Isle of Wight is the perfect choice. Known for its mild climate, coastal scenery and landscapes of fields, with resorts that have been holiday destinations since Victorian times. It is the largest and most populated island in England. Separated by the Solent, it is about 2 miles off the coast of Hampshire in the English Channel. The island currently has the highest number of award winning beaches in England, all managed to the highest standards and inspected daily. For retail therapy the artistic heritage of the Island means there are plenty of arts and craft outlets, selling everything from handcrafted jewellery to sculptured glass and wood carvings.

### Royal Pier Hotel - Sandown

The 2\* hotel offers good value for money. The Royal Pier Hotel occupies an excellent position on the seafront at Sandown and offers comfortable en-suite accommodation with colour television and tea/coffee making facilities. The large restaurant offers home cooked meals and entertainment is held in the bar every evening. The hotel has an indoor heated swimming pool and there is a lift to all main floors.

#### Departure Dates

March 25th	5 days	£270
May 6th	5 days	£300
July 8th	5 days	£320
August 19th	5 days	£320
September 9th	5 days	£320



### Trouville Hotel - Sandown

Opposite the golden beach and with panoramic views sweeping over Sandown and Shanklin Bay, the hotel offers the comfort and care for a well deserved break. The hotel's 88 well appointed rooms, most with stunning sea views, provide the facilities expected by today's well travelled guest. There is a lift to all floors. Relax and unwind at the bar and lounge while using the hotel's complimentary WiFi facility. Enjoy live evening entertainment in the islands largest ballroom, 1500 square feet of maple sprung dance floor. The function room is available for indoor

pursuits including short mat bowls, table tennis, darts and a pool table. The restaurant has a daily changing varied menu to suit all tastes with a friendly professional service.

#### Departure Dates

March 17th	6 days	£400	Mock Cruise Break
June 8th	5 days	£380	
September 6th	5 days	£530	
October 21st	5 days	£360	

### Daish's Hotel - Shanklin

A flagship to the extensive refurbishment programme was completed in 2015 the original building was an 18th century Coaching Inn, situated on Shanklin Street. There are still a number of period features that can be seen today. The hotel has 72 en-suite bedrooms with flatscreen television, tea/coffee making facilities. Free WiFi in public areas and live entertainment every evening. The hotel has a lift.

#### Departure Dates

April 15th	5 days	£310	
June 10th	5 days	£350	
September 30th	5 days	£350	
Superior & Garden View supplement		£40 per room	

#### Price Includes:

All coach travel/En-suite accommodation/ Dinner, Bed&Breakfast / Evening entertainment / Excursions

**Excursions for Isle of Wight will be from the following depending on weather and seasonal events.**

Newport      Ryde      Island Tour      Shanklin & Godshell





## Jersey



Jersey is the largest and most southerly of the Channel Islands, located about 90 miles from the British Coast and only 14 miles from the Normandy coast. From the rugged cliffs of the north down to the long, sandy beaches of the south and the idyllic valleys that link the two. Jersey has remained unspoilt whilst also offering visitors a huge amount to explore. It is the island's abundance of natural beauty and mild, sunny climate which makes it so appealing today. Jersey has a great deal to offer the holidaymaker with its contrasting coastline of rugged cliffs, hidden coves, fishing harbours, clear blue seas, many well

preserved historic sites, ancient forts and Norman castles. St Helier is the capital of this holiday island, with a maze of narrow streets bustling with life.

Please note you will be travel as foot passengers and therefore you are required to carry your own luggage from the designated airport coach drop off point to the airport terminals. Any airport assistance must be requested at the time of booking.

A coach/minibus will meet you at Jersey airport and transfer you to the hotel where you will meet the hotel representative.

### Norfolk Lodge Hotel

One of the successful hotels situated in St Helier only half a mile from the beach and town centre. A comfortably furnished hotel providing an entertainment programme makes this hotel a popular lively choice. En suite bedrooms provide hospitality tray, flat screen TV and telephone. The hotel has an indoor swimming pool complex, large lounge and bar or simply relax on the sun terrace. The hotel has a lift to most floors but due to the different levels of the building there are a number of stairs around the property that may be difficult if you have restrictions in mobility.



### Price Includes:

All coach travel /

Direct return flights from Bristol Airport /

En-suite accommodation /

Dinner, Bed & Breakfast / At leisure in St Helier/

Entertainment programme from May to September

We require a £150 deposit per person for all holidays to Jersey by air /

Balances for Jersey are required 8 weeks before departure /

Travel insurance details are requested when balance is paid /

Flight details are subject to change, including dates, times and airports.

**Brent Thomas Coaches Ltd act as retail agents for  
Destination Specialists ATOL protected 9503**

### Departure Dates

April 18th	6 days	£620
Single Supplement	£40	
July 14th	7 days	£830
Single Supplement	£120	
October 7th	6 days	£660
Single Supplement	£75	

Up to date guidelines on travelling to Jersey can be found online.

<https://www.gov.uk/Health/Coronavirus/Travel/Pages/CoronavirusTravelAdvice.aspx>



## Lake District

### Includes a Cruise on Lake Windermere

The Lake District is one of the best-loved and most beautiful regions in Britain where the sound of water is never far away. Waterfalls, meandering rivers and tranquil lakes add a special magic and serenity that brings visitors back time and time again.

### Cumbria Grand Hotel

A charming Victorian 3\* hotel set in 20 acres of gardens overlooking Morecambe Bay in the Edwardian resort of Grange over Sands and laying between the mountains and the sea. It is a small picturesque seaside town with lovely limestone buildings, a traffic free promenade and beautiful ornamental gardens. All the en-suite bedrooms are furnished to a high standard and include a colour television and tea/coffee making facilities. There is a lift to all floors.

### Price Includes:

All coach travel/En-suite accommodation/Dinner, Bed&Breakfast /2 nights entertainment /Excursions/ Cruise on the Lake Windermere/ Spring Luxury Package includes 3 complimentary drinks vouchers per day (maximum of 2 vouchers can be used for alcoholic drinks). Soup & Sandwich lunch on 2 days. Packed Lunch for 1 day.



### Departure Dates

March 25th	5 days	£350	Spring Luxury Package
June 13th	5 days	£445	
August 5th	5 days	£455	
November 25th	5 days	£345	Turkey & Tinsel
Single Supplement	£64		

### Excursions

Grassmere & Ambleside                      Bowness-On-WindermereKendal

## Lytham St Annes

Retaining a timeless classic style this elegant resort has something for all the family. As you stroll along the promenade past the bandstand and gardens you could have stepped back into time. Relax and take in the breathtaking views of the Irish Sea and beach that has changed little over the years.

### Inn on the Prom Hotel

Situated on the sea front there is an eating experience to be enjoyed at the Vettriano's Restaurant and year round entertainment. Over four generations the family are looking forward to welcoming you to one of the finest hotels St Annes has to offer. With over 100 en-suite bedrooms including tea/coffee making facilities, Freeview television, direct dial telephone, hairdryer and WiFi. Facilities include gymnasium, heated pool, jacuzzi, fitness room, squash court, solarium and toning areas.

### Price Includes:

All coach travel/En-suite accommodation/Dinner, Bed&Breakfast /Evening entertainment/Excursions



### Departure Dates

April 8th	5 days	£360
July 1st	5 days	£370
November 18th	5 days	£340
Boutique Room Upgrade		£100 per room
Sea View Supplement		£140 per room

### Excursions

Southport                      Fleetwood                      BlackpoolCleveley



## Liverpool

Liverpool is a city where you can be yourself. It's a city for creative types, music lovers, culture addicts and friendly faces. The popularity of the Beatles contributed to the city's status as a tourist destination. As a major British port, the docks in Liverpool have historically been central to the city's development.

### Atlantic Hotel

The hotel is a 225 bedroom, twelve storey hotel that contributes to the city's stunning skyline. Set on the edge of the city's commercial district, opposite the Royal Liver building, the hotel is within walking distance to some of Liverpool's best attractions. En-suite rooms are furnished with a modern and contemporary feel, TV, climate control, WiFi access, hairdryer, telephone and tea/coffee making facilities. This is bed & breakfast only with many choices of restaurants or cafes within walking distance of the hotel.

### Departure Dates

February 19th	5 days	£340
August 26th	5 days	£350
October 14th	5 days	£350
November 11th	5 days	£350
Single Supplement	£140	

### Price Includes:

All coach travel/

En-suite accommodation/Bed & Breakfast only /Only 1 excursion on this city break allowing the maximum of opportunity to explore.

Please note Liverpool hotel dates are subject to change due to football fixtures, sporting events and special occasions. In any case of cancellations you will be informed as soon as possible and offered either another date or a full refund.

### Excursions

Southport



## Liverpool - Fabulous Merseyside

### The Municipal Hotel



The Municipal Hotel Liverpool has 179 bedrooms in a remarkable and inspiring landmark of the city. Time is of essence and at the heart of The Municipals story. Its iconic clock tower and bells giving the tempo to a timeless melody. Various restaurants, bars and a state of the art spa sanctuary including a pool, will offer everyone the place to have the time of their lives. Elegant rooms, comfortably equipped with a smart TV, tea and coffee making amenities, a laptop safe, a mini-fridge, walk-in shower, modern hairdryer as well as luxury toiletries. There is a lift to all floors.

### Price Includes:

All coach travel/En-suite accommodation/Bed&Breakfast only/Only 1 excursion on this city break allowing the maximum of opportunity to explore.

### Departure Dates

August 4th	5 days	£450
Single Supplement	£144	

### Knowsley Hall

A grand main gate entrance, exclusive run of the rooms and a bubbly welcome awaits at Merseyside's only stately home-residence of the Earls of Derby for over 600 years. Wander grand halls, elegant dining rooms, an ornate ballroom and marvel at works by renowned artists such as Rembrandt, Van Dyke and Gainsborough, before uncovering the secret passageways and hidden rooms that have remained unchanged for centuries. Hear an abundance of intrigue as your guide tells stories of Knowsley - once a Second World War hospital, a racecourse and reputedly even a goldmine.



## Llandudno



One of the most popular tourist destinations in the UK, regularly placing in the top five of the TripAdvisor's 'Traveller Choice Awards', and it's easy to see why. The town is beautifully set in a natural bay and features its very own Blue Flag beach. You'll also find Llandudno Pier, the longest pier in Wales and a wide variety of shops and cafes. Overlooking Llandudno you'll find the Great Orme which is accessible by either cable car or tram and offers a panoramic view of the coastline and ocean beyond. Further afield there's Snowdonia National Park, Colwyn Bay and a whole host of picturesque country and seaside villages.

### Merrion Hotel

The 3\* Merrion Hotel is a luxurious en-suite hotel accommodation with a lift to all floors and stunning views from the sea-front rooms, with toiletries, flatscreen TV, direct dial telephone and hot drinks making facilities. With four generations of the Bream family welcoming guests it makes them one of the oldest family run businesses in the area and their focus on quality and value remain true to their past. The Merrion is a firm favourite with many of our customers who book return holidays year after year.

### Departure Dates

March 4th	5 days	£430	
April 29th	5 days	£440	
July 15th	5 days	£500	
September 9th	5 days	£500	
October 28th	5 days	£450	Turkey & Tinsel
November 11th	5 days	£450	Turkey & Tinsel
December 23rd	5 days	£635	Christmas
December 23rd	12 days	£1,575	Xmas-Twixmas-New Year
December 30th	5 days	£635	New Year
Single Supplement £72 - £110 depending on dates			

### Price Includes:

All coach travel/En-suite accommodation/Dinner, Bed & Breakfast  
/Regular evening entertainment/ Excursions



**Excursions will be from the following depending on weather and seasonal events.**

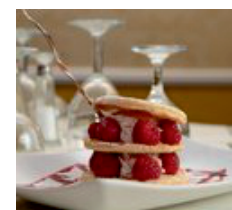
Chester                      Llanfair P.G.                      Betws y Coed

### Holiday Insurance

Reminder: your accommodation booking is a legally binding contract. In the event of cancellation we are entitled to retain your deposit and ask for a further payment to compensate us for our loss. For your protection we suggest you take advantage of holiday cancellation insurance. We regret cancellations for whatever reason may be chargeable. We therefore recommend for peace of mind you take out cancellation insurance through an intermediary who is authorised and regulated by the Financial Services Authority.

#### SCALE OF CANCELLATION CHARGES

Period before departure within which written cancellation of holiday is received	Amount of cancellation charge as a % Deposit
More than 42 days	
42 - 29 days	50%
28 - 15 days	85%
14 - 1 days	100%
Departure date or later including voluntary termination whilst on holiday	100%





## Llandudno (continued)

### Hydro Hotel (Leisureplex Hotels)

Ideally situated on the sea front overlooking Llandudno Bay, close to the Aberconwy Centre and shops. A large entertainment suite on the lower ground floor complete with bar, dance floor and entertainment five evenings per week. The superb 'Looking Glass' bar is situated on the ground floor and has views over the bay. A games room with a full sized snooker table is on the ground floor. There are several steps to the front of the hotel but there is a wheelchair lift from the street level into reception. The large ground floor restaurant seats up to 225 guests. The en-suite bedrooms are over five floors including a small number of ground floor rooms. There is a lift at the hotel but most floors are split level and there are some steps to the majority of bedrooms. All bedrooms have central heating, tea/coffee making facilities, hairdryer and Freeview televisions with radio channels. Most rooms have a shower.

#### Departure Dates

January 29th	5 days	£230	Spring Breakaway
March 18h	5 days	£290	Spring Breakaway
June 17th	5 days	£380	
July 20th	5 days	£400	
August 19th	5 days	£400	
September 28th	5 days	£320	
November 25th	5 days	£320	Turkey & Tinsel
Sea View Supplement	£24 - £44 per person		
Single Supplement	£0 - £52		



#### Price Includes:

All coach travel/En-suite accommodation/Dinner,Bed & Breakfast /Regular evening entertainment/ Turkey & Tinsel includes 1 festive themed lunch /Excursions

### Somerset Hotel (Daish's Hotel)

The hotel enjoys an enviable sea-front promenade location in the heart of Llandudno. Enjoy the stunning views from the hotel coffee shop or from a number of sea view rooms. With en-suite accommodation comfortably furnished with tea/coffe making facilities and colour television. Breakfast and evening meals are served in the Conwy Restaurant. Entertainment is held most evenings. The hotel has a lift to all floors but there are some steps to the main entrance.

#### Departure Dates

March 4th	5 days	£260	incl 1 night half price bar between 5pm - 9pm house brands only
April 29th	5 days	£310	
June 24th	5 days	£350	
July 22nd	5 days	£350	
August 19th	5 days	£350	

Sea View Supplement      £15 per person



#### Price Includes:

All coach travel/En-suite accommodation/Dinner,Bed & Breakfast /Regular evening entertainment/ Excursions

**Excursions will be from the following depending on weather and seasonal events.**

Chester      Llanfair P.G.      Betws y Coed



## Newquay



Newquay is Cornwall's premier holiday resort boasting some of the finest coastlines in Europe with no less than eleven beaches ! The town is an ancient one, the 'new quay' from which it takes it's name dates back to the fifteenth century, when it was known as 'Towan Blystraa'. Aswell as being Britain's surfing capital it offers wonderful cliff and beach walks, a picturesque harbour and a variety of activities including shark fishing which we would all love to see photos from. There is a good variety of both high street and local shops, with interesting alleyways housing little craft and antique shops and a

selection of inviting tea shops and cafes for a refreshing break.

### Eliot Hotel ( Leisureplex Hotels )

The Eliot Hotel is only a few yards from the seafront and within walking distance of the shops and harbour. Situated close to the Great Western and Tolcarne beaches. The lounges provide a great place to relax after a busy day exploring. All 77 en suite bedrooms have tea, coffee making facilities, hair dryer and Freeview television with radio channels. The lift serves most rooms although all floors are split level with some intermediate steps.

#### Price Includes:

All coach travel/ En-suite accommodation/ Dinner, Bed&Breakfast/ Excursions/ Entertainment most evenings

#### Departure Dates

January 29th	5 days	£220	1/2 price Bar Deal
March 11th	5 days	£250	1/2 price Bar Deal
April 17th	5 days	£280	1/2 price Bar Deal
November 4th	5 days	£280	Turkey & Tinsel
incl 1 festive lunch			
December 2nd	5 days	£275	Turkey & Tinsel
incl 1 festive lunch			
Single Supplement £0 - £36 depending on date			
Cosy Double Supplement £36 per person			



### Barrowfield Hotel (Daish's Hotel)

The hotel is ideally located, just 200 yards from Tolcarne beach, considered one of the best in the area and only a short 10 minute stroll from Newquay town centre. The hotel has a coffee shop serving sandwiches and cakes throughout the day. It also fortunate to have a heated indoor swimming pool. The entertainment room features live entertainment every night and the spacious lounges offer plenty of space to relax in. With comfortable en-suite accommodation, flatscreen tv, tea and coffee making facilities. The hotel entrance has 3 steps, the restaurant, coffee shop, bar and ballroom are all on the ground floor and accessible from the main entrance. The hotel is spread over four floors with lift access to all of the floors.

#### Price Includes

All coach travel/En-suite accommodation/Dinner, Bed&Breakfast/Excursions/Evening entertainment/

#### Departure Dates

February 16th	5 days	£170	1/2 price bar 2 nights between 5pm - 9pm house brands only
November 18th	5 days	£275	Turkey & Tinsel

**Excursions will be from the following depending on weather and seasonal events.**

Padstow                      Truro



## North Devon Coast - Barnstaple

Picturesque North Devon has some of the most beautiful coastline in the British Isles with miles of golden sands, breathtaking cliffs and quiet unspoilt fishing villages. Vast expanses of clean, golden, sandy beaches, often backed by rugged cliffs which have captivated many a visitor's imagination over the centuries. Many of the coastal towns and villages ooze charm and history with narrow streets largely untouched by time with much to offer visitors. Whilst you won't find any High Street big names there are plenty of individual seaside shops, boutiques, numerous art galleries, cafes and restaurants.

### Imperial Hotel

Expect nothing but luxury from the 4-Star Imperial Hotel, located in the heart of Barnstaple yet it has all of the tranquillity and warmth of an elegant country house including a sweeping oak staircase and lavish soft furnishings. With first class cuisine, outstanding service and classic River Taw views. 63 en-suite bedrooms with free WiFi, television, tea and coffee making facilities, luxury toiletries, water and refreshments, hairdryer and safety deposit facilities, each beautifully decorated with it's own unique style and ambience. A perfect treat for any occasion. The hotel has a lift to all floors and 24 hour room service is available.

### Price Includes:

All coach travel/En-suite accommodation  
/Dinner,Bed&Breakfast/Excursions

### Departure Dates

February 12th	5 days	£380
July 15th	5 days	£540
November 4th	5 days	£440
Single Supplement	£80	
Superior River View supplement	£140 per person	



### Excursions will be from the following depending on weather and seasonal events.

Ilfracombe                      Bideford

## North Devon Coast - Bideford

### Durrant House Hotel

The 3\* Durrant House Hotel is situated on the outskirts of the historical old port of Bideford with views over the Torridge Estuary and beyond to the sandy beaches of Instow. All the bedrooms have Italian marble bathrooms, colour television, tea/coffee making facilities and hairdryers. The large restaurant offers a varied menu. In the evening you can relax in the Appledore Bar or enjoy the entertainment in the ballroom. There is a lift to all floors.

### Price Includes:

All coach travel/En-suite accommodation /Dinner,Bed&Breakfast/Evening entertainment/Excursions

### Departure Dates

February 12th	5 days	£260	Cosy Break
April 1st	5 days	£310	
July 15th	5 days	£340	
August 26th	5 days	£350	
November 4th	5 days	£300	Turkey & Tinsel
December 30th	4 days	£400	

### Excursions will be from the following depending on weather and seasonal events.

Barnstaple                      Ilfracombe



## Pontins Sand Bay

Sand Bay lies 2 miles north of the seaside resort of Weston Super Mare, set in a beautiful open landscape. The grounds of the park have plenty of green grass to stroll on and relaxing seating areas. Sand Bay Holiday Village offers basic en-suite ground floor classic chalet apartments with television with limited channels, tea and coffee making facilities, central heating, bed linen plus a set of towels for the duration of your holiday. The park has a ballroom with a large dance floor. Daytime and evening entertainment programmes including live bands and cabaret shows and a residential entertainment team. The amazing Bluecoats are regarded by many as being some of the best entertainers in the industry and Sand Bay Holiday Village are very proud of the rich tradition that comes with the famous blue uniform. So prepare to be entertained and amazed as you witness their talents first hand, singers, dancers and a whole host of other talented Bluecoats just



waiting to make your stay a memorable one. Choose your favourite themed break for 2024 ! On site amenities include bowls, amusement arcade, pool, darts, Club Bar - Rose Garden Café, coffee shop and shop. Please be aware the pool is currently closed. The restaurant is a self service buffet offering a full English breakfast and later a three course evening meal plus tea and coffee. With a range of good value beers, wines and soft drinks available for the perfect accompaniment to your meal.

### Price Includes:

All coach travel/En-suite classic apartment accommodation with bed linen/Dinner, Bed & Breakfast /Evening entertainment /Excursions/

### Departure Dates

April 15th	5 days	£185	Holiday Break
May 27th	5 days	£190	Holiday Break
June 17th	5 days	£200	60s Tribute
August 16th	4 days	£190	60s Tribute
October 18th	4 days	£180	Lets Rock
November 22nd	4 days	£170	Turkey & Tinsel



Upgrade from a classic apartment to Club apartments available £20 per room per night.

Please note that Sand Bay is an adult only park.

**Excursions will be from the following depends on weather and seasonal events**

Taunton

Burnham

## PRIVATE HIRE



We can tailor make holidays for groups and organisations to suit your requirements.

Please do not hesitate to contact us if you are looking for a specific holiday.

Available for group private hire including day trips, we have a full range of vehicles from 8 to 59 seats and can cater for any requirement.



For a quote please either ring to speak to a member of our office staff or e-mail us on [info@brentthomascoaches.com](mailto:info@brentthomascoaches.com)



## Paignton

Lying in the centre of the magnificent sweep of Torbay, Paignton is one of the premier resorts in this area with its long sandy beaches, colourful atmosphere and clear waters. During the summer months life seems to revolve around the seafront, here you'll find over half a mile of safe beach where you can take a boat trip from Paignton Harbour offering a regular ferry service to Torquay and Brixham.

### Torbay Court Hotel

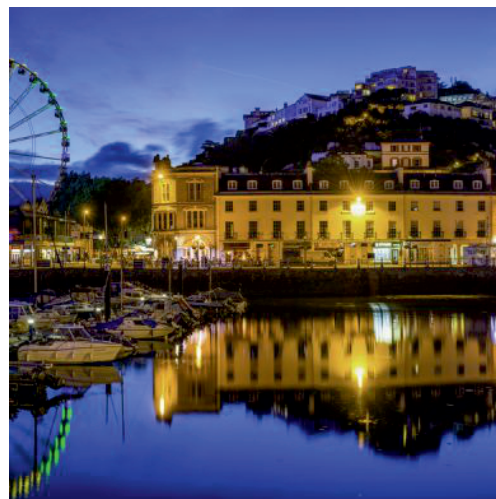
The comfortable tastefully finished en suite bedrooms enjoy modern decor, beautifully refurbished bathroom/shower rooms, tea and coffee making facilities, flat screen televisions and hairdryer. With tasty home-cooked food along with friendly servers create a relaxing enjoyable dining experience in the Bay Brassiere Restaurant. There is a lift at the hotel

### Departure Dates

February 12th	5 days	£260	
March 18th	5 days	£300	
April 1st	5 days	£310	
May 27th	5 days	£335	
July 20th	8 days	£570	
August 26th	5 days	£370	
September 27th	4 days	£280	
October 28th	5 days	£300	
November 18th	5 days	£310	Turkey & Tinsel

### Price Includes:

All coach travel/En-suite accommodation/Dinner, Bed & Breakfast/ Regular Evening entertainment/ Excursions



**Excursions will be from the following depending on weather and seasonal events.**



Newton Abbott  
Brixham

Exeter  
Dawlish & Teignmouth



### Holiday Insurance

We remind you that your accommodation booking is a legally binding contract. In the event of cancellation we are entitled to retain your deposit and ask for a further payment to compensate us for our loss. For your protection we suggest you take advantage of holiday cancellation insurance. We regret that cancellations for whatever reason may be chargeable. We therefore recommend that for peace of mind you take out cancellation insurance through an intermediary who is authorised and regulated by the Financial Services Authority.

#### SCALE OF CANCELLATION CHARGES

Period before departure within which written cancellation of holiday is received	Amount of cancellation charge as a %
More than 42 days	Deposit
42 - 29 days	50%
28 - 15 days	85%
14 - 1 days	100%
Departure date or later including voluntary termination whilst on holiday	100%

## Paignton (continued)

### Marine Hotel

Situated on a level position, directly opposite the seafront and only a short walk to the town centre. With 53 en-suite bedrooms, a sunlit reception area and a plushly designed conservatory. Boasting a panoramic view of Paignton Seafront and the pretty Palace Gardens. There is a lift to all floors. Serving traditional home cooked food. All bedrooms have beverage making facilities, hairdryers, and colour televisions. Some ground floor rooms available.

### Departure Dates

April 8th	5 days	£290	
June 17th	5 days	£385	
July 22nd	5 days	£390	
September 6th	4 days	£280	
October 18th	4 days	£270	
November 25th	5 days	£320	Turkey & Tinsel
Specific room or sea view supplement		£10 per room per night	



### Price Includes:

All coach travel/En-suite accommodation/Dinner, Bed & Breakfast/ Regular Evening entertainment/ Excursions

### Palace Hotel

Built in 1870, Steartfield House, as it was known, was the private residence to Washington Singer, one of the sons of Isaac Singer of the sewing machine fame. The house was one of only a handful on Paignton's seafront and was set on its own substantial grounds. In 1925, the property was sold. At this time, the large extension was added and the building became The Palace Hotel. Intended to be Paignton's premier hotel, it became the social hub of the town. During the Second World War, HM Government requisitioned The Palace for the Canadian Armed Forces. There are pictures in the Washington Bar showing the hotel at this time. Trust Houses bought The Palace Hotel in 1950, and retained it until 1990 when, as Forte Hotels, the company was broken up and its many hotels sold off. After another company who kept it for ten years bought the Palace in 2001, the Palace was passed into its current ownership.

Blending luxury and service with a modern, stylish interior as well as an exclusive health suite with indoor pool. The hotel boasts a prime seafront location with views across Torbay. Set in beautiful grounds on the esplanade, directly opposite the seafront with the town only a short walk away. En-suite bedrooms with complimentary tea and coffee making facilities, WiFi, flat screen television, hair dryer and trouser press. A lift services all floors. There is an entertainment programme running every evening.

### Departure Dates

January 8th	5 days	£250	
March 15th	4 days	£250	
June 7th	4 days	£295	
October 28th	5 days	£350	
December 6th	4 days	£270	Turkey & Tinsel

### Price Includes:

All coach travel/En-suite accommodation/Dinner, Bed & Breakfast/ Regular Evening entertainment/ Excursions



**Excursions for Paignton will be from the following depending on weather and seasonal events.**

Newton Abbott

Exeter

Brixham

Dawlish & Teignmouth



## Scarborough

With its unrivalled position as one of Britain's premier coastal resorts, which lies close to North Yorkshire's rugged National Park. There are golden beaches, superb parks and gardens to enjoy as well as the natural beauty and historical heritage of the County of Yorkshire. Scarborough has been a traditional seaside destination for over a hundred years, with sweeping sands of the North and South Bays, combined with the wooded valleys and ornamental gardens means the resort is as popular as ever.

### Cumberland Hotel (Leisureplex Hotels)

Extremely well situated on the South Cliff a few minutes walk from the Spa complex, beach and town centre. There are splendid views of the resort from the north facing rooms. The Bar lounge has a large dance floor where entertainment is provided most evenings, an attractive restaurant and a quiet lounge with free Wi Fi in public areas. All 86 bedrooms have a bath or shower and WC tea/coffee making facilities, hair dryer and TV with radio channels. There is central heating throughout the hotel. A lift serves all floors (few additional stairs to some rooms)

#### Price Includes:

All coach travel/En-suite accommodation/Dinner,Bed&Breakfast /Regular Evening entertainment/Excursions/ Spring Breakaway includes free drink with Dinner

#### Departure Dates

March 18th	5 days	£280	Spring Breakaway
View Supplement	£24	per person	
May 5th	7 days	£450	
Single Supplement	£78		
View Supplement	£66	per person	
September 8th	7 days	£500	
Single Supplement	£78		
View Supplement	£66	per person	



#### Excursions

Whitby & Goathland                      Bridlington

## Sidmouth

Sidmouth lies on a sheltered bay and is an enchanting regency resort set amidst the sandstone cliffs of Devon's Jurassic Coast. The town itself is full of history, independent shops, beautiful gardens and unspoilt character making it truly unique. It's time warp ambience is the perfect prescription to relax and browse. For the less energetic there is a gentler stroll around town, park and gardens and along the seafront linked by a walkway to the western beach at Jacob's Ladder.

### Kingswood Hotel

The 3\* hotel is located at the centre of Sidmouth's glorious esplanade overlooking the red sandstone cliffs of the World Heritage Coast. A lot of the bedrooms offer stunning views across Lyme Bay and some have balconies with large picture windows. En-suite bedrooms have colour television and tea/coffee making facilities. Comfortable lounges overlook the sea and flower filled patios. The hotel is renowned for its food with delicious locally sourced produce. The lift serves all of the floors.

#### Price Includes:

All coach travel/ Excursions  
En-suite accommodation/Dinner,Bed & Breakfast

#### Departure Dates

March 23rd	5 days	£390
October 28th	5 days	£385
Sea View Supplement	£60	per person

#### Excursions

Exeter                      Exmouth



## Scotland - Fort William & Jacobite Railway

Fort William, the 'Outdoor Capital of the UK' is the largest town in the Western Highlands. It is situated at the southern end of the Great Glen, on the shores of crystal clear Loch Linnhe beneath towering Ben Nevis, Britain's highest mountain. Book before we sell out on one of our favourite breaks.

### Alexandra Hotel

Stay in the heart of it all, central location in the main street and Fort William high street on your doorstep. This deceptively large hotel boasts 93 bedrooms. Due to the age and nature of this grand old building all bedrooms are individual in size and shape. All our rooms provide a good 3-star standard with en-suite bathrooms, Tv's, complimentary toiletries, hairdryers and tea/coffee making facilities.

Two fantastic restaurants with a relaxed and comfortable setting serving up delicious food daily from a tasty and filling lunch, quick bite, or a relaxing evening meal. Start the day off with a full Scottish breakfast from the buffet in our bright restaurant. Then, at the end of the day, sit down to a 3-course table d'hôte set menu in the evening. Plus a large and comfortable bar and several individual lounge areas to unwind and chill. There is a lift at the hotel.



### Price Includes:

All coach travel/En-suite accommodation/ 1 night DB&B on your outward & return journey / 4 nights DB&B at the Alexandra Hotel/ Excursions

### Departure Date

April 14th	7 days	£605
Single supplement		£114

### Itinerary:

#### Jacobite Railway

Described as one of the greatest rail journeys in the world. The train takes you past some of the most beautiful and breathtaking scenery in Scotland. The arched Glenfinnan Viaduct is known the world over for its remarkable engineering and was used for its dramatic setting as the Hogwarts Express carried Harry Potter off to school.



### Ben Nevis Distillery

Founded in 1825 by John McDonald the Ben Nevis Distillery's unique selling point is the water from the mountain where it is used in the whisky making process. This pure water gives the whisky a unique character and the barley itself is transported all the way from Eastern Scotland. You can discover the secret of whisky distilling. Encounter the mythical Giant Hector McDram who will reveal the Legend of the Dew of Ben Nevis in a specially commissioned audio visual presentation. Then it's time to enjoy a guided tour of the production areas and finishing with a complimentary tasting.

### The Nevis Range Mountain Experience

The mountain gondola system, the only one of its kind in Britain offers a truly unique experience. Enjoy the scenic ride absorbing the spectacular views and clear mountain air. The gondolas transport visitors effortlessly from 300ft up to 1,250ft on the north face of Aonach Mor, the eighth highest mountain in Britain. The journey takes approximately 15 minutes each way.

### Cruise

With a truly fascinating and informative skipper's commentary, you'll experience some of Scotland's best wildlife including porpoise, common and grey seals and maybe even a golden eagle while enjoying breathtaking scenery. You'll be in awe of some of the best views of the southern slopes of Ben Nevis, Britain's highest mountain.





## Scotland - Loch Lomond Shores, Oban & Inverary



Dunoon is situated on the Cowal peninsula on the western shore of the Firth of Clyde where Loch Long and Holy Loch join the sea. It is as beautiful as it is diverse, from the towering mountains of the north to the mellow scenery and sea lochs of the south. The town has a fine Victorian heritage with lovely gardens and century old villas which back onto a four mile flat promenade running along the front. Dunoon is in Scotland's first National Park and is surrounded by both the rolling hills and woodlands of the Argyll Forest Park and the lochs and mountains of the Southern highlands.

### Holiday Insurance

Reminder: your accommodation booking is a legally binding contract. In the event of cancellation we are entitled to retain your deposit and ask for a further payment to compensate us for our loss. For your protection we suggest you take advantage of holiday cancellation insurance. We regret cancellations for whatever reason may be chargeable. We therefore recommend for peace of mind you take out cancellation insurance through an intermediary who is authorised and regulated by the Financial Services Authority.

#### SCALE OF CANCELLATION CHARGES

Period before departure within which written cancellation of holiday is received	Amount of cancellation charge as a %
More than 42 days	Deposit
42 - 29 days	50%
28 - 15 days	85%
14 - 1 days	100%
Departure date or later including voluntary termination whilst on holiday	100%

### Selborne Hotel, Dunoon

Looking across the Clyde with pleasant lawns reaching down to the promenade and waters edge. Ground floor areas include a TV lounge, bar lounge with dance floor, quiet lounge and games room. With 98 en-suite bedrooms with central heating, tea/coffee making facilities, hairdryer and television. Entertainment is provided most evenings in the bar lounge. The lift serves almost all rooms. Bedrooms have a small change of level and are served by the lift to the half landing. The third floor rooms are in a section of the hotel not served by the lift. WiFi is available in public areas.



#### Price Includes:

All coach travel/En-suite accommodation/  
Dinner B&B/Evening entertainment most nights/  
Time at leisure in Oban/  
Time at leisure in Inverary/  
Time at leisure at Loch Lomond Shores

#### Departure Date

September 8th 7 days	£460
Single supplement	£78
Loch View supplement	£66 per person

## Scotland - Scotch Wilds, Whiskies & Railways

### Grant Arms Hotel

A warm Highland welcome awaits you at the magnificent Grant Arms Hotel, awarded a gold star for scoring in the top ten percent of it's star rating where former visitors include both Queen Victoria and Queen Elizabeth II. Located in the fine Scottish country town of Grantown on Spey, not far from the famous Spey River, where only the best local produce is used by Head Chef Chris Grant and his team, why not taste a Speyside Malt Whisky in the Capercaillie Bar as you enjoy the stunning backdrop of the Cairngorm Mountain Range.

En-suite bedrooms include toiletries, television, telephone, radio, tea and coffee making facilities and hairdryer. There is a lift at the hotel.



### Price Includes:

All coach travel/En-suite accommodation/1 night DB&B each way at an overnight stay hotel/  
4 nights DB&B at main stay hotel/ Excursions

### Departure Date

July 21st	7 days	£700
Single supplement		£190

### Itinerary:

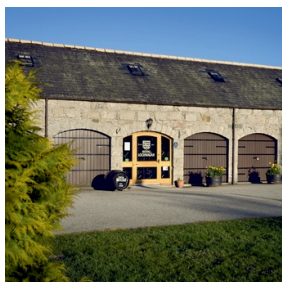
#### Balmoral Castle

Balmoral Castle has been the Scottish home of the Royal Family since it was purchased for Queen Victoria by Prince Albert in 1852, having been first leased in 1848.

Expedition tour with 2 hour Landrover tour on the estate. Accompany a guide on a fascinating tour of Balmoral Estate. Through the manicured parkland and gardens in front of Balmoral Castle. Then travel through the Estate farm to enter the old Caledonian Pine Forest. This is one of the country's most important habitats and home to the elusive capercaillie. After spending some time exploring this pristine area head out of the woods onto the open hillside. The views soon start to open up as we travel through the heather high up the flanks of Lochnagar, one of Scotland's most famous mountains. The tour then heads back to civilisation via the monuments and historical buildings of Easter Balmoral. Discover the intriguing life stories of the resident wildlife and learn about the conservation management that is currently underway to help protect some of the United Kingdoms rarest species. Although there are no guarantees, wildlife species which are regularly encountered, include birds of prey, red squirrels, red deer, red grouse, black grouse, snow bunting and salmon. Swarovski binoculars are provided on the safaris. The outstanding quality of the binoculars allows you to get closer to the wildlife and landscapes of Balmoral Estate. During the day you can also enjoy the Balmoral audio tour, which guides you through the grounds, gardens and exhibitions before arriving at the restaurant for a delicious afternoon tea. With opportunities to browse the Mews Shop to purchase a gift as a reminder of the visit.

### Stathspey Steam Railway

Stunning Cairngorms Mountain scenery glides past as you ride aboard Scotland's premier heritage railway, to celebrate 40 years of steam travel in the highlands. Set out on a 20 mile trip of nostalgia among moorland, woods and alongside the River Spey to catch a glimpse of the finest golf courses, the RSPB's Osprey centre observation hide, through the forests of the Broomhill region, made famous by "Monarch of the Glen".



### Royal Lochnagar Distillery

Royal Warrant proudly on display, sitting close to Balmoral Castle, your tour, tutored tasting and introduction to whisky making at the exclusive distillery Royal Lochnagar reveals age old traditions and craftsmanship. A fascinating history of Royal visits and suspicious fires is revealed as you admire gleaming copper stills, the Filling Store and Warehouse before a dram of award-winning 12 year old Malt.



## Scotland



### Rob Roy Hotel

The 2\* popular hotel is situated in idyllic countryside at the gateway to the glorious Trossachs and is set within Scotland's first National Park. Offering a good choice of home cooked meals and comfortable en-suite accommodation with colour television and tea/coffee making facilities. The majority of rooms are on the ground floor and there is lift access to all rooms on the first floor. We class this as a budget hotel and in our opinion it represents excellent value for money.

### Price Includes:

All coach travel/En-suite accommodation/Dinner, Bed & Breakfast/Entertainment/Excursions

### Departure Date

March 2nd	6 days	£330
July 20th	6 days	£380

### A Taste of Scotland Excursions

Edinburgh - Scotland's capital city, Edinburgh is renowned for its heritage, culture, and festivals. Take a long walk around the centre to explore the World Heritage Sites of the Old Town and New Town, as well as all the area's museums and galleries. Pause to fortify yourself with tea and scones at the city's charming tea rooms or duck into a traditional pub.

Glasgow - Glasgow is one of the most exciting cities you'll ever come across. It offers a lively, bustling place, distinctive and full of character, where you are bound to get a very warm welcome indeed. This is a city with striking architecture, contemporary art spaces and fascinating museums, many of which are free. Glasgow city centre is one of the best shopping destinations in the UK, outside of London's West End, and when it comes to nightlife, Glasgow knows what it's doing. With a diverse culinary scene, abundance of pubs and bars as well as some of the UK's best music venues, this is the city for the night owls.



Stirling - A wee city with a big history, Stirling punches well above its weight for historic attractions and spectacular scenery, not to mention shopping, places to eat and exciting events. Take in the magnificent views of Stirling Castle's hill-top esplanade towards the National Wallace Monument on the edge of the rolling Ochil Hills before looking north east for the mountain peaks of Loch Lomond & The Trossachs National Park. Savour delicious food and drink on your holiday in Stirling in friendly pubs, cosy cafés and buzzing restaurants. At the local farmers' markets you can speak to local producers and pick up some tasty treats, or browse independent boutiques in the historic surroundings of the Old Town and the Victorian Stirling Arcade.

### Gift Vouchers Available

Ask a member of staff for details



## Shopping Weekends

### Somerset Shopping Weekend

Always a sell out so book early, the weekend begins in Bath, with stylish boutiques and familiar high street names, top restaurants, cool cafes and unique gastro pubs. Staying at the 3\* Wessex Hotel situated in Street with en-suite bedrooms and a lift to all floors. The hotel is within walking distance for shopping at Clarks Village Designer Outlet on Sunday with over 90 stores offering huge savings on a fantastic range of designer labels.

#### Departure Dates

January 6th	2 days	£105	Includes Sunday Lunch
January 13th	2 days	£105	Includes Sunday Lunch



### Worcester and Gloucester Shopping Weekend

A perfect opportunity to explore and shop with the weekend beginning in Worcester located in the heart of the West Midlands a cultural city to shop with fantastic shops and boutiques alongside some of the best loved retailers. Worcester hosts stores full of one-off gifts, luxury fashion and jewellery and much more. Staying at the Whitehouse Hotel in Worcester right in the heart of the historic city centre with en-suite bedrooms and a lift to all floors. After breakfast we depart to spend Sunday in Gloucester with a choice of the Victorian docks, museums, shopping centres, bar and restaurants

#### Departure Dates

March 30th	2 days	£135
September 28th	2 days	£135
December 7th	2 days	£135
Single Supplement	£25	



## Splendid Morecambe

Morecambe is the collective name for the three fishing villages of Bare, Poulton and Torrisholme and is a coastal town on Morecambe Bay in Lancashire. One of the most popular attractions and photo opportunities is Graham Ibbeson's 'Eric Morecambe' statue.

### Auckland Hotel

Enjoy a relaxing break in great value rooms, clean and comfortable. En-suite bedrooms feature flat screen television and tea/coffee making facilities. From the lounge the beautiful sea views, sunsets and changing landscapes of Morecambe Bay can be admired from the picture windows.



#### Price Includes:

All coach travel/En-suite accommodation/Dinner,Bed&Breakfast /Evening entertainment/ Excursions

#### Departure Dates

TBC	5 days	£TBC
TBC	5 days	£TBC

Sea View Supplement £ per person per night

**The excursion will be from the following depending on weather and seasonal events.**

Kendal              Skipton Market              Blackpool              Lancaster              Windermere



## Panoramic Rhone Cruise ( South of France )

We're ready to board MS VIVA Voyage for an unforgettable journey.

On-board facilities include light filled cabins with elegant interior and fully stocked mini bar. Main gourmet restaurant 'RIVERSIDE'. 'VIVA's Bistro' as an alternative to the main restaurant with classic dishes for lunch and dinner. Wellness area with whirlpool, steam bath and infrared sauna. Putting green on the sundeck. Onboard souvenir shop. Laundry service available. WIFI included. Onboard entertainment includes enrichment lectures, piano music nightly, in-room movies, culinary demos, local entertainment and 'themed' fun. A lift connects the lobby with the restaurant, the Ruby Deck and the Diamond Deck, there are steps leading to the Emerald Deck and the Sun Deck. The cabins on the Diamond and Ruby Decks all have French balconies, inviting you to enjoy the passing scenery from the comfort of your own bed.

### Price Includes

All coach travel/return ferry crossings Dover/ 1 night dinner bed & breakfast on outward journey/ 7 nights full board on the MS VIVA Voyage/ Full Board - multi course gourmet menus, either table-served or buffet style for breakfast, lunch and dinner. Vegetarian options offered with each meal and snacks / Meals will be served at a set time for whole group/ All inclusive drinks - Exquisite non alcoholic drinks (mineral water, soft drinks, juices, various coffees, teas, cocoa) from 10.00hrs to 00.00hrs. High quality alcoholic drinks (sparkling wine, Aperol, house wines (white, rose and red) selected beers and long drinks, cocktail of the day from 10.00hrs to 00.hrs / well stocked minibar in each cabin/ High tea, once per cruise, a fine selection of sweet and savoury delicacies / Nespresso machine in each cabin including 2 complimentary capsules per person per day/ Welcome bottle of sparkling wine / Reusable water bottle

### Departure Date

September 18th	£2,190	Emerald Standard	Initial Deposit £250pp	
10 days	£2,440	Ruby Standard	2nd Deposit £500pp	by 1st May
	£2,600	Diamond Standard	Full Balance	by 1st June
	£2,670	Junior Suite Ruby	Valid Passport & Travel Insurance is required for this holiday.	

### Excursions

Avignon - Avignon is full of history and full of life. Capital of the Vaucluse and the Côtes du Rhône, seat of the popes and city of art and culture, theatre, cinema, museums, big stores and little shops. From medieval streets and houses to private mansions from the Renaissance, passing through all its old and enticing squares, some no bigger than a tiny lane with diverse dining opportunities. The City Hall built between 1845 and 1851 over a former cardinal's palace of which it has kept the old fortified tower, transformed into a belfry in the 15th century. Next to it, the municipal theatre, also from the 19th century, houses the Avignon opera and, all the way at the top, the delightful Belle Époque style carousel still turns.

Arles - A walking tour of Arles is a wonderful way to explore the Provençal town's rich history, Roman heritage and vibrant culture. Van Gogh spent 16 months in Arles, arriving in 1888. He painted over 300 works during his stay, there are many places still recognisable from his paintings.

Viviers - This medieval city fortified with two surrounding walls, has a lot architectural treasures. Here the stones recount history and bear the witness of a glorious past of over 2000 years history. Walk around to discover the picturesque and shaded streets, vaulted passages, basic houses with their Romanesque or gothic doors and windows, Renaissance façades and private mansions from the 18th century.

A guided tour of the Lavender Museum includes a tour on the Little Lavender Train, an immersive show in the 360° room. View the live lavender essential oil distillation and various species at the dedicated botanical garden.

Chalon-sur-Saone - Owned by the Hospices Civils de Beaune, the former hospital, or Hôtel-Dieu, now welcomes visitors from all over the world. Its main building is located in Beaune town center. It's impressive and imposing architecture design with glazed tile roof. A tour reveals the history of this hospital foundation, its creators and about it's role of the estate.

Macon - Cluny Abbey is listed as a national monument in France most of it has now been destroyed but clever 3D special effects produce unforgettable among the remains. Visit the Gates of Honour to the Cheese Tower, via the Palais Jean de Bourbon, the remains of the great abbey church, the cloister, the flour mill and the monks' cellar.

## Skegness

Visiting Skegness on the Lincolnshire Seaside became ever more popular over the years though at first only the better off people were able to take advantage of the facilities provided in Skegness. Just up the coast from Skegness is the tranquil town of Mablethorpe which is perfect for a day out with the family. In Mablethorpe you can visit the Sea Sanctuary, take a walk on the beaches, shop till you drop and much more.

### Savoy Hotel

The Savoy, Skegness's Premier Sea Front Hotel. Offering 46 en-suite stylish bedrooms, all furnished to a very high standard and fully equipped with modern facilities. Renowned for their superb Restaurant, where the experienced Chef's offer delicious home cooked food, freshly prepared using only the finest of Lincolnshire's produce and delivered to your table with a friendly and professional service. Enjoy a drink and meet new friends in the contemporary Savoy Lounge and Bar. Relax in comfort to live professional entertainment during the holiday season. The Savoy enjoys an excellent Central Promenade location and is an ideal base to explore the many local attractions. There is lift access to two floors and then one flight of stairs to the third floor.

### Price Includes:

All coach travel/En-suite accommodation/Dinner,Bed&Breakfast /Evening entertainment/ Excursions

### Departure Dates

May 20th	5 days	£375	
July 29th	5 days	£400	
October 28th	5 days	£360	Holly & Mistletoe
December 29th	5 days	£445	New Year



**The excursions will be from the following depending on weather and seasonal events.**

Lincoln                                      Boston Market                                      Mablethorpe

## Sidmouth

This lovely seaside town is nestled beneath majestic red cliffs, which, along with the green hills of the Sid Valley, will captivate you too. Sidmouth really is a town like no other, located in East Devon and full of friendly faces and beautiful scenery, it is no wonder that Sidmouth is a firm favourite for a seaside resort. The dramatic cliffs, fresh sea air and the abundance of attractions makes it a wonderful place to recharge the batteries. It's the kind of town where you can do everything or nothing at all.

### Belmont Hotel

Discover our captivating hotel in Sidmouth - from the moment you drive through the castellated entrance and are greeted by our frock-coated doorman, you realise you are in a world apart. Only yards from the beach and the Esplanade, the enchanting Belmont Hotel in Sidmouth maintains the impeccable standards of a bygone age at our gorgeous luxury hotel. Enjoy traditional service and wonderful dining in our Restaurant where we have an outstanding reputation amongst Sidmouth hotels. In fact, with its attentive service and lovely sea views, The Belmont Hotel in Sidmouth is everything you ever dreamt of finding in a traditional seaside hotel. Sidmouth makes the perfect escape for a luxury holiday in Devon or a short break near the coast and there is no better place for a special celebration than The Belmont - the most charming of luxury Sidmouth hotels



**Price Includes:** All coach travel/En-suite accommodation/  
Dinner,Bed&Breakfast / Excursions

### Departure Dates

May 13th	5 days	£660
November 11th	5 days	£500
Single Supplement		£40
Sea View supplement		£80 - £40 per person depending on date

### Excursions

Exeter

Exmouth



## **Soulful Memories: Tales of Ireland's Ancient East**

Immerse yourself in crafty tales from the old to the new in Co. Wexford. Sense soulful druid spirits at Huntington Castle, one of Ireland's most beloved ancestral homes and top 20 hidden gems. Stop by Kilkenny, the heart of traditional crafts and home to some of the country's most recognisable landmarks. Heady sights and smells await as you feel the heat of the glass furnace at Waterford Crystal, with a unique 200 year story. Follow tracks along the majestic Suir River Journey on Ireland's longest narrow-gauge railways. Meet the dedicated team at Ireland's only seal pup rehab and be introduced to their fluffy friends. With the charming riverside town of Enniscorthy as a base, you are offered a fascinating insight into this lovely and varied part of Ireland.



### **Riverside Park Hotel, Enniscorthy Ireland**

The 4 star Riverside Park Hotel in Wexford is nestled on the banks of the River Slaney in the picturesque town of Enniscorthy. Overlooked by Enniscorthy Castle, the Riverside Park Hotel is the perfect location in Wexford and the sunny south-east to explore. With 100 en-suite bedrooms contemporary in style, generous in size and infused with calming colour palettes, pillow topped mattress and all the essentials you require.

### **Price Includes:**

All coach travel/Return ferry crossings/En-suite accommodation/Dinner, Bed&Breakfast / Excursions

### **Departure Dates**

September 9th	5 days	£530
Single Supplement	£90	



### **Itinerary:**

#### **Tour of House of Waterford Crystal Factory**

Go behind the scenes with a tour, as the skilled staff expertly bring their masterpieces to life before your eyes - heating, blowing and cutting each piece of crystal to delicate perfection. Enter the beating heart of the world's luxury crystal manufacturers, world-renowned for quality and beauty since 1783. From dazzling chandeliers and luxurious stemware to intricate vases and decorative gifts. Every piece of Waterford Crystal is meticulously handcrafted by skilled artisans, using traditional techniques passed down through generations.

### **50 minute journey on the Waterford Suir Valley Railway**

The Waterford Suir Valley Railway is a registered charity operating a 3ft gauge railway along approximately 10km of track from Kilmeadan back towards Waterford. The line shares much of its route along the banks of River Suir with the Waterford Greenway.



#### **Guided tour of Huntington Castle and Gardens**

During a private tour of the ancestral seat of the influential Esmonde Family (now the Durdin-Robertsons). Hear tales of this 17th century castle's long line of eccentric occupants while meandering through passages to the living quarters, formal rooms and even the dungeons.

#### **Expert Talk and Tour of the Seal**

### **Rescue Ireland**

Meet Ireland's iconic seal species and the team dedicated to their rescue, rehabilitation and release. The pups themselves tell their own story - their fascinating life history, behaviours and the threats they face on modern oceans, due to the impacts of environmental change. There will be plenty of photo opportunities.



## South Coast Explorer

A small seaside town on the south coast of England in the county of West Sussex which can trace its roots back to when it was a small fishing village. On average Bognor Regis has more sunshine than any other town in Britain, making it the sunshine capital. Make sure you visit one of the town's parks and gardens as they are one of the South East In Bloom competition winners. There will be time for lazing on the beach, shopping at department stores, arcades and souvenir kiosks. There are also many lively sea front cafes and bars which give the town a very relaxed atmosphere.



### Royal Norfolk Hotel (Leisureplex Hotels)



A magnificent Georgian hotel situated on the sea front, very close to the pier and a short walk to the shops. This 2\* hotel overlooks its own extensive gardens to the beach which is predominantly pebbly with clean and inviting waters. All the en-suite bedrooms are comfortably furnished with colour television and tea/coffee making facilities. Nelson's Restaurant looks out across the hotel's gardens to the sea offering superb views. A lift serves most rooms although there are some stairs between floors.

#### Price Includes:

All coach travel/En-suite accommodation/Dinner, Bed & Breakfast /Evening entertainment/ Excursions/ Spring Breakaway includes free drink with Dinner

### Departure Dates

February 26th      5 days      £230  
Sea View Supplement      £24 per person  
Spring Breakaway - includes 1 free drink with dinner

May 29th      5 days      £380  
Single Supplement      £52  
Sea View Supplement      £44 per person

September 18th      5 days      £360  
Single Supplement      £52  
Sea View Supplement      £44 per person

**The excursion will be from the following depending on weather and seasonal events.**

Worthing      Chichester



### Ways to pay

We accept cash, cheques  
(made payable to  
Brent Thomas Coaches Ltd)  
and Bank Transfers.  
Please ask for our bank details





## Steaming through Snowdonia



### George IV Hotel (Leisureplex Hotels)

The hotel is in an excellent location on the High Street with views of the castle. There are several steps to the front of the hotel with a wheelchair lift from street level into reception. With level access from reception to all ground floor areas. The entertainment room with bar and dance floor where entertainment is provided most evenings is situated on the ground floor. Free Wi Fi in public areas. The 79 en-suite bedrooms have tea/coffee making facilities, telephone, hair dryer and TV. There is a large lift that serves all floors

#### Price Includes:

All coach travel/En-suite accommodation/Dinner, Bed&Breakfast /Evening entertainment/ Excursions/

#### Departure Dates

June 5th	5 days	£430
Single Supplement	£52	
Castle View Supplement	£44 per person	



#### Itinerary:

##### Caernarfon

Caernarfon is home to Wales' most famous castle which is prominent in the skyline for all to see and the town's narrow streets has a choice of shops. The stylish redeveloped waterfront Victoria Dock is a popular yachting marina set alongside the beautiful harbour looking out over the scenic Menai Straits and the Isle of Anglesey.

##### Betws Y Coed & The Ffestiniog Railway

In Porthmadog relax and enjoy a journey on the Ffestiniog Railway, the oldest independent railway company in the world established in 1832. We'll travel 13½-miles on a 70 minute journey as we climb 700 feet through tranquil pastures and magnificent forests, past lakes and waterfalls, through tunnels and around mountains.

##### Snowdon Mountain Railway

Take time to appreciate the fantastic and unique journey on The Heritage Steam Experience. A return journey allows for a 30 minute stop-over before passengers must return on the same train. As you make your way up the mountain, you'll experience awe-inspiring views and uncover the mountain's hidden secrets, from viaducts, waterfalls and gorges to the remnants of abandoned farms, chapels and medieval settlements.

## Tenby

### Clarence Hotel

A Grade 11 listed building superbly situated in the middle of the Esplanade on the South Shore with superb views of St Catherine's Island, Castle Beach, Caldey Island and Giltar Point. The town centre is only a few minutes level walk away. En-suite accommodation has a flat screen tv, tea and coffee making facilities and hairdryer. A popular hotel with friendly, helpful staff. Relax by the fire on the comfortable chairs overlooking the sea. The hotel has a lift and level, ground floor access to the Seagull Bar, Rose Garden, Reception and Dining Room.

#### Price Includes:

All coach travel/En-suite accommodation/Dinner, Bed&Breakfast /Evening entertainment/ Excursions

#### Departure Dates

October 28th	5 days	£320	Turkey & Tinsel
December 2nd	5 days	£320	Turkey & Tinsel



Excursions for Tenby will be from the following depending on weather and seasonal events.

Haverfordwest	St Davids	Carmarthen	Pembroke
---------------	-----------	------------	----------

## Torquay

Torquay is one of our favourite holiday destinations, with its iconic palm trees, busy harbour, international marina, sandy beach and wonderful array of continental style cafes, restaurants and cocktail bars. It is the perfect choice for a Devon seaside holiday or short break.

### Ashley Court Hotel

The popular 2\* budget hotel is situated in a central position and only a short walk to the town centre and seafront. The hotel offers a friendly atmosphere, comfortable en-suite accommodation, good food and entertainment every night. There is also an outside heated swimming pool with a lovely sun terrace. There is a lift but it does not service all floors.

### Price Includes:

All coach travel/En-suite accommodation/Dinner, Bed & Breakfast /Evening entertainment/ Excursions

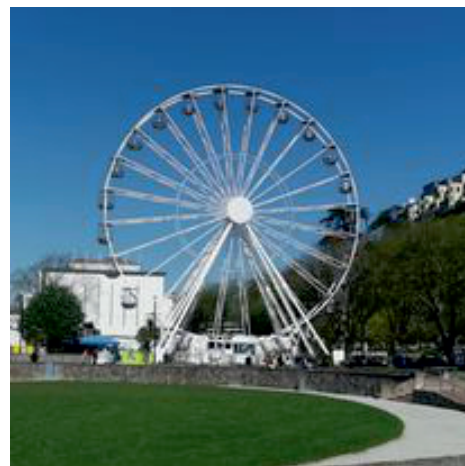
### Departure Dates

February 5th	5 days	£180	Bar Promotion
February 9th	4 days	£150	
February 26th	5 days	£180	Bar Promotion
March 1st	3 days	£135	
March 9th	3 days	£140	Mothering Sunday
March 18th	5 days	£210	
March 29th	4 days	£220	Easter Weekend
April 1st	5 days	£240	
April 19th	4 days	£205	
April 29th	5 days	£260	
May 4th	2 days	£95	Seaside Special
May 10th	3 days	£160	Sunday Lunch
May 11th	2 days	£100	Sunday Lunch
May 13th	5 days	£260	
June 3rd	5 days	£260	
June 14th	3 days	£150	
June 15th	2 days	£110	Seaside Special
June 24th	5 days	£290	
July 6th	2 days	£120	Sunday Lunch
July 8th	5 days	£290	
July 12th	3 days	£160	
July 13th	2 days	£110	Seaside Special
July 22nd	5 days	£300	
July 27th	2 days	£110	Sunday Lunch
August 5th	5 days	£290	
August 9th	3 days	£170	
August 19th	5 days	£290	
August 30th	4 days	£220	
September 9th	5 days	£280	
September 14th	2 days	£110	Seaside Special
September 23rd	5 days	£280	
October 4th	3 days	£145	
October 7th	5 days	£260	
October 11th	3 days	£150	Sunday Lunch
October 21st	5 days	£260	
November 8th	3 days	£155	T & T Sunday Lunch
November 11th	5 days	£260	T & T
November 25th	5 days	£260	T & T
November 29th	3 days	£160	Christmas Party
December 6th	3 days	£160	Christmas Party
December 9th	5 days	£210	T & T
December 13th	3 days	£150	Xmas Party Sunday Lunch
December 23rd	5 days	£490	Christmas
December 27th	4 days	£200	Twixmas
December 30th	4 days	£365	New Year

### House Parties

January 15th	5 days	£170
January 22nd	5 days	£170
January 29th	5 days	£175

Join us for a firm favourite for fun, fun, fun ! On arrival you will be treated to tea and cake/biscuits while your cases are taken to your rooms. During the week there will be 3 afternoons to join in the fun and games with bingo and quizzes too, a bar promotion to help you along with a light lunch. To end the week on a high we have a party night with a glass of wine with dinner, balloons, streamers and fancy dress so don't forget to bring some silly costumes with you.





## Torquay (continued)

### Derwent Hotel (TLH Resort)

If you enjoy a lively atmosphere where there's always plenty going on, the Derwent is the place to stay. With comfortable en-suite bedrooms, bright, modern bars and lounges and a friendly, informal restaurant with the popular buffet breakfast. The Starlight Lounge is the main hub for night time entertainment and dancing so there's never a dull moment. With a full programme of day time activities which include short mat bowls, skittles, tea dances, quizzes, competitions and bingo. A lift serves most of the bedrooms. The hotel has extensive indoor leisure facilities and an outdoor swimming pool.

### Departure Dates

January 15th	5 days	£190	
February 26th	5 days	£240	
March 15th	4 days	£220	
April 22nd	5 days	£280	
May 20th	5 days	£300	
June 17th	5 days	£330	
July 8th	5 days	£330	
August 5th	5 days	£330	
October 14th	5 days	£305	
November 25th	5 days	£310	T & T
December 6th	4 days	£235	Festive Wknd

### Toorak Hotel (TLH Resort)

Sep 23rd	5 days	£320	
December 30th	4 days	£445	New Year

### Riviera Hotel

Offering good value, friendly and comfortable accommodation throughout the 142 en-suite bedrooms with digital flat screen tv, tea/coffee making facilities. The hotel has an indoor swimming pool, available April - October. Dinner at the restaurant will have traditional cuisine with a choice of hot and cold desserts too. Then join everyone at the Show Bar for the evening entertainment. There's bingo followed by a cabaret act and dancing until late. Or watch the game on one of the large flat screens at the Sports Bar. There is a lift at the hotel but corridors and steps are unavoidable due to the nature of the building.

### Departure Dates

January 12th	4 days	£160	Bar Promo
January 15th	5 days	£190	Bar Promo
January 22nd	5 days	£190	Bar Promo
February 5th	5 days	£200	Bar Promo
March 4th	5 days	£220	Bar Promo
April 22nd	5 days	£245	
May 20th	5 days	£300	
June 3rd	5 days	£330	
June 28th	4 days	£285	
July 26th	4 days	£290	
July 29th	5 days	£350	
August 2nd	4 days	£290	
September 27th	4 days	£250	
October 14th	5 days	£265	Bar Promo
November 11th	5 days	£260	T&T Bar Promo
December 30th	4 days	£435	New Year

Single Supplement £5 per night

### Headland Hotel

This elegant hotel sits majestically on the headland looking out to the sea, set in two acres of magnificent grounds with stunning views which can be enjoyed from the Gallery Lounge or sea view terrace. The 3\* hotel accommodation has 78 en-suite bedrooms with flat screen tv, hairdryer, tea/coffee making facilities, free WiFi in public areas, sauna and mini gym. There is a lift to most floors.

### Departure Dates

March 4th	5 days	£300	Cosy Break
June 24th	5 days	£380	
October 28th	5 days	£330	

**Cosy Breaks** - Tea, Coffee & biscuits on arrival. Tasty treats and entertainment on at least 2 afternoons in the Gallery Lounge. A six course

All coach travel/En-suite accommodation/Dinner,Bed&Breakfast /Evening entertainment/Excursions

**Excursions for Torquay will be from the following depending on weather and seasonal events.**

Newton Abbott      Exeter      Brixham      Dawlish & Teignmouth

## Tribute Breaks in Torquay



Book one of our tribute themed breaks and enjoy an entertaining holiday with friends, family and loved ones. A holiday with entertainment are ideal for celebrating special occasions, including birthdays, anniversaries, providing everyone with unforgettable memories. With various days and a variety of tribute acts including Cliff Richard, Rod Stewart, George Michael, Elvis, Cher, Tom Jones, Diana Ross and Tina Turner, there's something to suit all musical tastes. There's no better way to enjoy your favourite music than watching some

of the best tribute acts around. Sing along, clap, dance or just enjoy the entertainment. Tribute breaks in Torquay include dinner, bed and breakfast. The entertainment takes place at the hotel.

### Ashley Court Hotel, Torquay

The popular 2\* budget hotel is situated in a central position and only a short walk to the town centre and seafront. The hotel offers a friendly atmosphere, comfortable en-suite accommodation, good food and entertainment every night. There is also an outside heated swimming pool with a lovely sun terrace. There is a lift but it does not service all floors.



#### Price Includes:

All coach travel/En-suite accommodation/Dinner, Bed&Breakfast

#### Departure Dates

January 19th	3 days	£129	Michael Buble & Elton John
January 26th	3 days	£129	Shirley Bassey & Elvis
February 2nd	3 days	£129	Tina Turner & Cher
February 25th	2 days	£79	Billy Joel
March 3rd	2 days	£79	Cliff Richard
March 24th	2 days	£79	Phil Collins
October 18th	3 days	£140	Tina Turner & Cher
October 25th	3 days	£140	Rod Stewart & Tom Jones



### The Riviera Hotel, Torquay



Offering good value, friendly and comfortable accommodation throughout the 142 en-suite bedrooms with digital flat screen tv, tea/coffee making facilities. The hotel has an indoor swimming pool, available April - October. Dinner at the restaurant will have traditional cuisine with a choice of hot and cold desserts too. Then join everyone at the Show Bar for the evening entertainment. There's bingo followed by a cabaret act and dancing until late. Or watch the game on one of the large flat screens at the Sports Bar. There is a lift at the hotel but corridors and steps are unavoidable due to the nature of the building.

#### Price Includes:

All coach travel/Refurbished en-suite accommodation/Dinner, Bed&Breakfast/Excursion

#### Departure Dates

March 8th	4 days	£190	Diana Ross, George Michael
& Divas of the 60's			
April 5th	4 days	£210	Phil Collins, Meatloaf & Divas of the 60's





## Worcester and Gloucester City Break

We start the weekend with a visit to Worcester with its seemingly endless streets of individual shops set against larger retail shops. Worcester Cathedral is a magnificent sight as it rises majestically above the River Severn with its royal tombs of King John and Prince Arthur, medieval cloisters, ancient crypt and chapter house and beautiful Victorian stained glass it is well worth a visit. Departing after breakfast we make our way to Gloucester known for its 11th century Cathedral which has Romanesque and Gothic architecture, plus the tomb of King Edward II. Nearby are the Victorian Docks, with restored Victorian warehouses, a dry dock and the Mariners Chapel. The National Waterways Museum celebrates the city's industrial past with canal boats and interactive displays.

### Whitehouse Hotel, Worcester

The premier hotel right in the heart of the historic city centre of Worcester offering quintessential English charm coupled with modern convenience. With 84 en-suite bedrooms boasting power showers, toiletries, and comfortable beds. Foregate's brasserie offers a choice of delicious British and international dishes with a menu that is changed to guarantee freshness and a great choice,

### Price Includes:

All coach travel/En-suite accommodation/Dinner, Bed&Breakfast/  
Time at leisure Worcester on Saturday and Gloucester on Sunday

### Departure Dates

March 30th	2 days	£135
September 28th	2 days	£135
December 7th	2 days	£135
Single Supplement	£25	



## Warner Leisure Hotels - Bodelwyddan Castle

Bodelwyddan is a Grade II listed Victorian building near the North Wales Coast, not far from Snowdonia. Set within the grounds of a romantic castle, but with all the amenities of a modern hotel including a superb range of leisure facilities numerous, daily activities and nightly live entertainment. With 260 acres of glorious parkland for views and walks that really do go on for miles and miles, this really is the ultimate walking destination. Choose from archery, croquet or simply book a spa treatment. Dine in the lovely St David's restaurant and then head to Lowther Hall and enjoy the live music, entertainment and dancing. Standard rooms will be located in Llewellyn Hall which will require an outside walk. For an indoor room, upgrade to Princess Hall. Also introducing Coffee Nest, serving up delicious lunch and snack options. It's taken over from Market Kitchen as the go-to lunch spot at Warner Hotels, featuring mouth-watering light bites and freshly baked pastries. Warner now operate on a cashless basis for your ease and convenience. Set up a charge card on arrival with one of the friendly reception team.

### Price Includes:

All coach travel/En-suite accommodation/Dinner, Bed&Breakfast /Entertainment/ Excursions

### Departure Dates

June 24th	5 days	£480
RE-MIXED: Featuring visiting acts such as vocalist, band or comedy act, ballroom, party dancing and leisure activities.		
Signature Room £30 supplement per person		

**Excursions for Bodelwyddan will be from the following depending on weather and seasonal events.**

Chester	Llanfair P.G.	Betws y Coed
---------	---------------	--------------

## Warner Leisure Hotels - Cricket St Thomas

This classic country house is set in splendid parkland, with colourful gardens, lakes, and a unique woodland area. The scene of much of the famous TV comedy, To The Manor Born, Cricket St. Thomas was also frequently visited by Lord Nelson and Lady Hamilton. This classic country house is set in splendid parkland, with colourful gardens, lakes, and a unique woodland area. The 1820's manor has 12 Historic rooms and suites in Cricket House, all exquisitely furnished, they stay true to their roots with period detail like original fireplaces and large sash windows for enjoying the garden views. Standard and Signature rooms, 63 all in the Courtyard, are located between Reception and Cricket House with easy access to the main amenities. The Walled Garden is a lovely quiet location near the leisure club, home to 164 Standard and Signature rooms, some with patios.

The hotel provides extensive entertainment, including nightly live performances, and excellent dining. Also introducing Coffee Nest, serving up delicious lunch and snack options. It's taken over from Market Kitchen as the go-to lunch spot at Warner Hotels, featuring mouth-watering light bites and freshly baked pastries. Warner now operate on a cashless basis for your ease and convenience. Set up a charge card on arrival with one of the friendly reception team.

### Price Includes:

All coach travel/En-suite accommodation//Dinner,Bed&Breakfast /Entertainment/Excursions

### Departure Dates

April 22nd                      5 days                      £380

RE-MIXED Showcasing Cirque - The Greatest Show: Warner present this spectacular theatre production, plus acts such as vocalist, band or comedy act, ballroom, party dancing and leisure activities.

Premier Room Upgrade £30 supplement per person

**Excursions for Cricket St Thomas will be from the following depending on weather and seasonal events.**

Burnham on Sea      Taunton                      Weston Super Mare                      Sidmouth                      Weymouth

## Warner Leisure Hotels - Norton Grange

One of the real gems of your stay at Norton Grange, always a favourite destination is the views of the Solent, a busy and colourful waterway which stretches from Cowes to the Needles. As you walk around the beautiful grounds with tropical palms and then visit the beach, you may have a feeling of being abroad. The comfortable chalet accommodation and delicious 3 course dinners will leave you with the cosy feeling of being back home. With a host of facilities from an indoor heated swimming pool, an all weather bowls green to archery and a 9 hole Pitch n Putt, you'll have plenty to do. Then in the evening, just sit back and enjoy the very best of live entertainment with a show. Also introducing Coffee Nest, serving up delicious lunch and snack options. It's taken over from Market Kitchen as the go-to lunch spot at Warner Hotels, featuring mouth-watering light bites and freshly baked pastries. Warner now operate on a cashless basis for your ease and convenience. Set up a charge card on arrival with one of the friendly reception team.

### Price Includes:

All coach travel/En-suite accommodation/ Dinner, Bed & Breakfast / Entertainment / Excursions / Return Ferry Crossings

### Departure Dates

May 20th                      5 days                      £400

RE-MIXED: Featuring visiting acts such as a vocalist, band or comedy act, ballroom, party dancing and leisure activities

Premier Room Upgrade £30 supplement per person

October 7th                      5 days                      £330

GOLD. Featuring live music, comedy, a Warner show, ballroom and sequence dancing, plus hosted activities.

Premier Room Upgrade £30 supplement per person



**Excursions for Norton Grange will be from the following depending on weather and seasonal events.**

Newport                      Ryde                      Shanklin & Godshell                      Island Tour



## Weston Super Mare

A traditional Victorian seaside resort located at the foot of the Mendip Hills with magnificent views across the Bristol Channel to South Wales. Miles of golden sands, excellent shopping facilities, a pedestrianised High Street as well as the Sovereign Shopping Centre. Intriguing antiques, books and craft work are found just off the beaten track, amongst Weston's narrow side streets. Weston-super-Mare is the perfect gateway to all the attractions that Somerset offers, ideally situated to explore the whole North Somerset area including the picturesque town of Clevedon with its iconic Grade I listed Pier and Portishead, where you can unwind and dine out by the vibrant marina.

### New Ocean Hotel

A warm friendly welcome awaits all guests at this popular 2\* hotel which is situated at the far end of the promenade offering spectacular views over the Marine Lake and across the bay. En-suite bedrooms are comfortably furnished with colour tv and tea/coffee making facilities, an excellent choice of home cooked meals are offered nightly in the restaurant.

There is a 4 hour free bar every night between 6pm-10pm



### Departure Dates

February 23rd	4 days	£235	
May 17th	4 days	£260	
June 7th	4 days	£270	
July 12th	4 days	£275	
August 16th	4 days	£275	
September 20th	4 days	£270	
October 11th	4 days	£265	
November 8th	4 days	£280	Carnival T&T
November 29th	4 days	£270	Xmas Party Wknd
December 23rd	5 days	£600	Christmas
December 27th	4 days	£270	Twixmas
December 30th	4 days	£485	New Year

### Price Includes:

All coach travel/En-suite accommodation/Dinner,Bed&Breakfast /Evening entertainment/Excursions

### The Royal Grosvenor Hotel

Enjoy a drink at the hotel with views of the sea, while the lounge lead to a large terrace overlooking the lawns, seafront and the Grand Pier. En-suite bedrooms have flat screen televisions, tea / coffee making facilities, hair dryers and free WiFi. The large pleasant dining room offers a buffet style breakfast so you can eat as much as you like, evening meal is prepared by their long established chef. There is a lift at the hotel.



### Departure Dates

June 21st	4 days	£235	
November 15th	4 days	£245	
December 9th	5 days	£245	T & T
Sea View Supplement		£15 per room per night	

### Price Includes:

All coach travel/En-suite accommodation/Dinner,Bed&Breakfast /Evening entertainment/Excursions

**Excursions for Weston will be from the following depending on weather and seasonal events.**

Taunton

Burnham

## Weston Super Mare (continued)

### Smiths Hotel

A family run hotel occupying a prime position on the beautiful seafront. There are 50 attractively decorated en-suite bedrooms with tea/coffee making facilities, hairdryer, direct dial telephone and freeview colour tv. The rooms are laid out on two floors both easily accessible via a lift. The restaurant serves only the finest food by friendly staff.

### Departure Dates

March 25th	5 days	£270	Bar Promo&Cream Tea
May 13th	5 days	£315	
July 29th	5 days	£360	
October 7th	5 days	£270	Bar Promo&Cream Tea



### Please Remember

Can we please remind all our customers of our luggage policy. Please bring one small/medium sized suitcase per person, not one large suitcase per couple. We have to limit the size of the suitcases due to luggage space available on the coach and due to health and safety regulations they can be weighing no more than 20kg for our drivers and hotel staff to handle.

**Small Suitcase**  
Approx Size 18'

**Medium Suitcase**  
Approx Size 24'

### The Sandringham Hotel

Overlooking the bay of Weston Super Mare, the cosy en-suite bedrooms, some with views across the seafront. With tea/coffee making facilities, tv and telephone in every bedroom. The restaurant serves a varied evening menu and a hearty full breakfast. The bar offers beverages, snacks and regular entertainment. There is a lift at the hotel and free WiFi in public areas.

### Departure Dates

April 8th	5 days	£240	
June 3rd	5 days	£270	
August 19th	5 days	£270	
November 22nd	4 days	£230	T&T
December 30th	4 days	£390	New Year

### Price Includes:

All coach travel/En-suite accommodation/Dinner, Bed&Breakfast / Evening entertainment/Excursions



**Excursions for Weston will be from the following depending on weather and seasonal events.**

Taunton                                      Burnham



## Weymouth

It's such a special place with a beach, esplanade, historic harbour, marina and nature reserve encircling the town centre. Weymouth is a superb base to explore the spectacular coastal scenery on a walk or head slightly inland and you'll discover the county's rural charms. Weymouth's long arc of fine golden sand is second to none.

### Russell Hotel (Daish's Hotel)

Sister hotel situated next to the Prince Regent, a short level walk to the town centre, the 2\* hotel has en-suite bedrooms furnished with colour tv and tea/coffee making facilities. Start the day with a full English breakfast and in the evening why not have a drink from the bar before enjoying your 3 course meal. There is a lift to most rooms although some steps between floors are unavoidable.

#### Departure Dates

February 12th	5 days	£180	Half Price Bar 2 nights
March 11th	5 days	£250	Half Price Bar 1 night
Sea View Supplement		£30	per room

### Prince Regent Hotel (Daish's Hotel)

May 13th	5 days	£350	
June 10th	5 days	£360	
July 8th	5 days	£360	
August 5th	5 days	£360	
September 2nd	5 days	£360	
September 30th	5 days	£340	
October 28th	5 days	£320	
December 30th	4 days	£435	New Year ( all rooms sea view on this date)
Sea View Supplement		£	per room
Superior Room Supplement		£40	per room



#### Price Includes:

All coach travel/ En-suite accommodation/ Dinner, Bed & Breakfast/ Evening entertainment/ Excursions

### Crown Hotel

The charm and character of the hotel lies in the warm and friendly atmosphere which always prevails. Located at the top of the town centre next to the Town Bridge overlooking the historic fishing harbour and only a few minutes walk from the picturesque Brewers Quay. En-suite rooms have colour tv, internal telephone and tea/coffee making facilities. The lift serves all floors. The dining room is on the ground floor.

#### Departure Dates

February 2nd	3 days	£170	Sunday Lunch
March 11th	5 days	£300	
March 23rd	2 days	£130	Sunday Lunch
April 5th	4 days	£260	
May 6th	5 days	£340	
May 25th	2 days	£135	Sunday Lunch
June 3rd	5 days	£350	
June 21st	4 days	£300	Veterans Weekend
July 1st	5 days	£350	
August 3rd	8 days	£570	
August 31st	2 days	£140	Sunday Lunch
September 23rd	5 days	£340	



#### Price Includes:

All coach travel/ En-suite accommodation/ Dinner, Bed & Breakfast/ Evening entertainment/ Excursions

**Excursions for Weymouth will be from the following depending on weather and seasonal events.**

Poole                      Dorchester                      Portland

## Yorkshire Highlights

### Cornmill Lodge Hotel

The Corn Mill Lodge Hotel - Leeds, was completed in 1998, the design of the hotel was based on an original Corn Mill that occupied the site. Floral displays and patio area make it one of the most attractive hotels in Leeds. As a family run hotel in Leeds, we feel we can offer our guests the personal attention they deserve. We have 76 en-suite rooms available including tea and coffee making facilities, wireless internet access, hairdryer, TV inc Freeview channels, opening window and individually controlled heating. With a 100 seat restaurant, serving traditional English food, to the best food on offer from the Mediterranean this is the ideal base.

#### Price Includes:

All coach travel/En-suite accommodation/Dinner, Bed&Breakfast/Excursions

#### Departure Date

March 25th	5 days	£300
September 30th	5 days	£300
November 25th	5 days	£300
Single Supplement	£72	



**Excursions for Weston will be from the following depending on weather and seasonal events.**

York

Harrogate

Leeds



### Festive Treats

### Christmas at Windsor Castle

Windsor is a historic market town in the Royal Borough of Windsor and Maidenhead in Berkshire, England. It is the site of Windsor Castle, one of the official residences of the British monarch. Has Christmas really arrived unless there's a visit to the amazing Windsor Castle, the family home to British kings and queens for over 1,000 years. The size of the Castle is breathtaking, in fact it is the largest and oldest occupied Castle in the world. Christmas is an especially magical time of year to visit, when the State Apartments are adorned with glittering decorations, trees and lights to celebrate the festive season. Each year the highlight is the magnificent 20-foot-high Nordmann fir Christmas tree on display decked from top to bottom with twinkling lights and festive decorations.

#### Overnight hotel

Hotel confirmed 4 weeks before departure. Comfortable en-suite accommodation with hair dryer, television, tea and coffee making facilities.

#### Price Includes:

All coach travel/En-suite accommodation/Dinner, Bed&Breakfast /Time at leisure in London on Saturday/ Entrance to Windsor Castle and State Apartments on Sunday

#### Departure Date

December 6th	2 days	£165
Single Supplement	£30	





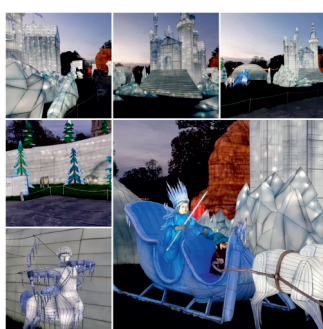
## Festival of Light Longleat at Christmas



Make your way to Longleat, where you can enjoy animal encounters from the comfort of your coach on a drive through the famous Safari Park. Then see Longleat House, one of the country's finest examples of Elizabethan architecture, dressed for Christmas. Each year, Longleat's spectacular Festival of Light transforms the park into a captivating illuminated winter wonderland. With a new theme each year, expect the unexpected, magnificent scenery and stunning structures. As well as the impressive illuminations, the ground floor of Longleat House will be decorated for Christmas and there will be attractions in the Main Square. Find the giant Singing Christmas Tree with hundreds of dazzling lights dancing in time to much-loved festive tunes, plus other great Adventure Park attractions. To top it all off at this Christmas spectacular, experience the estate transformed into a glowing winter wonderland, beautiful by daylight but incredible after dark. The display will cover more than 30 acres, handmade on location by a team of highly-skilled craftsmen.

### Overnight hotel

Hotel confirmed 4 weeks before departure. Comfortable en-suite accommodation with hair dryer, television, tea and coffee making facilities.



### Price Includes:

All coach travel/En-suite accommodation/Dinner, Bed&Breakfast /Entry to the Safari Drive Through & main square attractions and Festival of Lights/ Time at leisure in Bristol

### Departure Dates

December 1st	2 days	£175
Single Supplement	£28	
December 8th	2 days	£175
Single Supplement	£35	



## London Christmas Shopping

Offering the perfect opportunity to get away and explore. Time for shopping and purchasing Christmas gifts or treating yourself. Visit the museums to take in some culture. Or enjoy the Winter Wonderland in the heart of London in Hyde Park, immerse yourself in all things festive. Offering a wide variety of attractions, activities, entertainment, food, drinks and so much more, we guarantee there's something for everyone ! As it becomes dark Hyde Park is transformed by thousands of sparkling lights so grab your mulled wine, hot chocolate or stein of Bavarian beer and join in the festive fun.

Winter Wonderland must be pre-booked, entry at peak times and access to some activities requires a paid-for ticket. Please do not book your tickets until you have checked with our office to make sure the tour is definitely running.

### Overnight stay Hotel (outskirts of London)

A welcoming hotel with comfortable en-suite bedrooms with television, telephone, tea/coffee making facilities and hairdryer.

### Price Includes:

All coach travel/En-suite accommodation/Bed & Breakfast /Time at leisure in London

### Departure Dates

December 7th	2 days	£130
Single Supplement	£45	



## Manchester overnight

The Trafford Centre is world-renowned as a shopping and leisure destination with must have brands, high street favourites, delicious food and exciting leisure all under one spectacular roof.

Manchester Christmas Markets run for 6 weeks, a quarter of a century after they first began the markets continue to attract Mancunians and visitors alike to the city in their thousands. With over 225 stalls across nine sites throughout the city centre, there are fantastic treats on offer. Magical Winter Gardens with a mix of craft and gift stalls alongside food and drinks, festooned with lights and it's traditional log fires to bring the warmth.



### Overnight hotel ( not City Centre)

Hotel confirmed 4 weeks before departure. Comfortable en-suite accommodation with hair dryer, television, tea and coffee making facilities.

### Price Includes:

All coach travel/En-suite accommodation/Dinner,Bed&Breakfast/ Evening meal to be pre-booked 1 week before /Trafford Centre on Sunday/

Manchester on Monday

### Departure Dates

November 17th	2 days	£95
December 1st	2 days	£95
Single Supplement	£25	



## German Christmas Market

**Koblenz Christmas Market** - The Roman town is transformed into an atmospheric pre-Christmas paradise. The scent of freshly roasted almonds, mulled wine and gingerbread wafts through the streets. With handmade individual items at numerous stalls. At Jesuitenplatz you will find the city's largest Advent calendar, composed of the colourfully lot dormer windows of the baroque town hall

**Rudesheim Christmas Market** - Celebrate within the ancient historic landscape of the Rhine Gorge, creating an unique flair and atmosphere. Enchanting stalls and glowing lights, home and mansions are decked with lights, greenery and ornaments and show the festive spirit of the season. Vendors and craftspeople offer goods, delights and gifts.

**Cochem Christmas Market** - The magnificent Christmas market is set around the picturesque old town and glorious Gothic Cologne Cathedral, savouring the sights, sounds and tempting aromas of a traditional festive market. It's romantic alleys and half timbered houses create a backdrop tailor-made for the festive atmosphere

### Hotel Ebertor Hotel, Boppard

With an enviable location on the west bank of the Rhine, this 3 star hotel has 101 en-suite bedrooms, comfortably furnished and equipped with TV and hairdryer. There is an elegant restaurant, monastery cellar bar and a relaxing lounge area, plus an attractive outdoor terrace with stunning views across the Rhine.

### Price Includes:

All coach travel/En-suite accommodation/Dinner,Bed & Breakfast/ Welcome glass of wine on arrival / Ret ferry crossings

### Departure Dates

December 1st	5 days	£480
Single Supplement	£82	

We require a £150 deposit per person for all holidays to Germany

Balances for Germany are required 8 weeks before departure

A valid passport is required to travel.

Travel insurance details are requested when balance is paid.

Please note this date is potentially too early for the Boppard Christmas Market





## Festive Breaks & Christmas Parties

Join us for a Christmas break at your favourite destination. It's the season to eat, drink and be merry.

### Queens Hotel, Eastbourne

**Festive Sparkle** Incl 1 festive themed lunch

November 8th	4 days	£270
Single Supplement		£27



### Ashley Court Hotel, Torquay Christmas Party

Bristol on return journey		
November 29th	3 days	£160
December 6th	3 days	£160



### Derwent Hotel, Torquay Weekend Festive Break

Bristol on return journey		
December 6th	4 days	£235
Single Supplement		£30



### New Ocean Hotel, Weston Super Mare Christmas Party Weekend

November 29th	4 days	£270
Free bar 6pm - 10pm every evening		

## Xmas Shopping Weekends

Early booking is essential to avoid disappointment. Please note the information and dates on the Christmas Markets and events are subject to change and we cannot be held responsible for events being cancelled or altered but will be in contact once we are aware of any changes. Don't forget to ask about our daytrips too and like our Facebook page to keep up to date with special offers and extra dates that are added throughout the year.

To assist with costs, overnight stay hotel meals are designed to cater for a large group eating together at the same time, choices are basic and limited. This may not be suitable for everyone. Most hotels would have an alternative option via a bar menu or room service to purchase at your own expense should the inclusive meal not meet your personal preference.

### Trafford Centre & Manchester

Hotel to be confirmed (not city centre)		
December 1st	2 days	£95
Single Supplement		£25

### Gloucester & Worcester Xmas Shopping

Whitehouse Hotel, Worcester DB&B		
December 7th	2 days	£135
Single Supplement		£25



### Chester Xmas Shopping

Queens Hotel, Chester DB&B		
November 15th	3 days	£245
Single Supplement		£130

### London Christmas Shopping

Overnight stay hotel (outskirts of London) B&B		
December 7th	2 days	£130
Single Supplement		£47

### Festival of Light Longleat at Christmas

Overnight stay hotel DB&B		
Includes entry to Safari Drive through & Main Square attractions and Festival of Light.		
December 1st	2 days	£175
Single Supplement		£30
December 8th	2 days	£175
Single Supplement		£30



## Turkey & Tinsel and Holly & Mistletoe and Mistletoe & Wine



We have a choice of resorts to enjoy a festive break. All of our hotels offer a varied itinerary which could include tea & mince pies, traditional Christmas dinner, bingo or quizzes, festive entertainment, fancy dress or even a visit from Santa.

Please enquire about single and sea view supplements as they are not listed below.



### Haddon Hall, Eastbourne

October 21st	5 days	£350
November 4th	5 days	£340
November 15th	4 days	£290



### Derwent Hotel, Torquay

November 25th	5 days	£310
---------------	--------	------

### Merrion Hotel, Llandudno

October 28th	5 days	£450
November 11th	5 days	£450



### Savoy Hotel, Skegness

October 28th	5 days	£360
--------------	--------	------

### Torbay Court Hotel, Paignton

November 18th	4 days	£310
---------------	--------	------

### Durrant House Hotel, Bideford

November 4th	5 days	£300
--------------	--------	------



### Sandringham Hotel, Weston Super Mare

November 22nd	4 days	£230
---------------	--------	------

### Riviera Hotel, Torquay

November 11th	5 days	£260
2 for 1 Bar Promo 3 hours per night		

### Eliot Hotel, Newquay

November 4th	5 days	£280
December 2nd	5 days	£275
Includes 1 festive themed lunch		



### New Ocean Hotel, Weston Super Mare

November 8th	4 days	£280
Carnival Weekend. Free Bar 6pm-10pm		

### Pontins Sand Bay

November 22nd	4 days	£170
---------------	--------	------



### Parkhouse Hotel, Blackpool

November 18th	5 days	£365
---------------	--------	------

### Clarence Hotel, Tenby

October 28th	5 days	£320
December 2nd	5 days	£320

### Daish's Hotel, Blackpool

November 18th	5 days	£270
---------------	--------	------

### Hydro Hotel, Llandudno

November 25th	5 days	£320
Includes 1 festive themed lunch		



### Ashley Court Hotel, Torquay

November 11th	5 days	£260
November 25th	5 days	£260
December 9th	5 days	£210

### Anchorage Hotel, Babbacombe

November 25th	5 days	£260
---------------	--------	------

### Inn on the Prom, Lytham St. Annes

November 18th	5 days	£340
---------------	--------	------

### Babbacombe Hotel, Babbacombe

November 1st	4 days	£240
December 16th	5 days	£240



### Royal Grosvenor Hotel, Weston Super Mare

November 15th	5 days	£245
December 9th	5 days	£245

### Marine Hotel, Paignton

November 25th	5 days	£320
---------------	--------	------

### Cavendish Hotel, Exmouth

November 18th	5 days	£300
Includes 1 festive themed lunch		



### Durley Dean Hotel, Bournemouth

November 18th	5 days	£330
---------------	--------	------

### Palace Hotel, Paignton

December 6th	4 days	£270
--------------	--------	------

### Barrowfield Hotel, Newquay

November 18th	5 days	£275
---------------	--------	------

### Cumbria Grand Hotel, Cumbria

November 25th	5 days	£345
Includes Island Cruise on Lake Windermere		





We have great pleasure in offering you a selection of hotels for you to have a relaxing and enjoyable Christmas. Individual arranged entertainment programmes that combine both modern and traditional Christmas festivities such as candlelit dinners, party games, bingo and a whole lot more. Each hotel will have a different itinerary but we can guarantee that your Christmas package will include dinner, bed & breakfast, festive treats and Christmas entertainment. There will be one excursion during the Christmas period which may vary due to the hotel's itinerary and seasonal events in the area. Please enquire for single and sea view supplements for Christmas, Twixmas and the New Year as they are not listed below. We advise early booking for these popular dates.

### Christmas



December 23rd 5 days

**New Ocean Hotel, Weston Super Mare £600**

Full Board, Free bar 6pm-10pm

**Merrion Hotel, Llandudno £635**

Full Board

**Ashley Court, Torquay £490**

Full Board

December 23rd 12 days

**Merrion Hotel, Llandudno £1,575**



### Twixmas

It's the perfect opportunity for a Christmas break, when you can spend quality time in a relaxed atmosphere. A time to recharge in between the Christmas and New Year festivities.

December 27th 4 days

**New Ocean Hotel, Weston Super Mare £270**

Full Board. Includes free bar 6pm-10pm

**Ashley Court, Torquay £200**

### New Year

December 29th 5 days

**Haddon Hall, Eastbourne £520**

**Savoy Hotel, Skegness £445**

December 30th 4 days

**Sandringham Hotel, Weston Super Mare £390**

**Toorak Hotel, Torquay £445**

**Riviera Hotel, Torquay £435**

**Ashley Court Hotel, Torquay £365**

**Durrant House Hotel, Bideford £400**

**New Ocean Hotel, Weston Super Mare £485**

Includes free bar 6pm-10pm

**Prince Regent Hotel, Weymouth £435**

December 30th 5 days

**Merrion Hotel, Llandudno £635**



Join us to celebrate New Year in style with your family and friends at one of your favourite hotels which we have travelled to throughout the year. Each hotel will have their own festive entertainment package which may include a drinks reception, gala dinner, fancy dress and afternoon games. Some breaks may be half board while others are full board. Please enquire about single and sea view supplements for all of the New Year packages as they are not listed.



# Conditions Of Booking

These are the booking conditions under which BRENT THOMAS COACHES LTD (herein after referred to as BTC) accept bookings for all holidays. Please read this carefully.

## WHY SHOULD I READ THIS?

Because it is very important. These terms and conditions form a key part of our agreement with you and forms the basis of a legally binding contract between you as the lead name making the booking (and anyone else in your party) and us Brent Thomas Coaches Ltd. When you make this booking as lead name, you undertake that you have the authority to accept and do accept, on behalf of your party the terms of these booking conditions, which are governed by English Law, and the non exclusive jurisdiction of the English courts. Please take time to read through them and you will see set out in simple terms what responsibilities we both have when entering into a contract. BTC LTD reserve the right to refuse (without explanation) to accept any booking.

## HOW AND WHEN DO I MAKE THIS CONTRACT WITH YOU?

The contract is made with us when we are in receipt of your £40 deposit or £150 for European and Jersey per person and we issue a confirmation of booking. We will send you a confirmation of your booking usually within 48 hours of receipt. Please check this confirmation very carefully to ensure all the information is correct and notify us as soon as possible of any errors.

## HOW IS MY HOLIDAY MONEY PROTECTED?

In accordance with the EC Directive 90/314/EC all passengers booking with Brent Thomas Coaches Ltd are fully protected for the initial deposit and subsequently the balance of all monies paid to us, including repatriation if required, arising from cancellation or curtailment of their travel arrangements due to the insolvency of Brent Thomas Coaches Ltd, the money is held in a trust account at Lloyds TSB Bank, Market Street, Pontypridd.

To comply with the Package Travel, Package Holidays and Package Tours Regulations 1992, we are members of BAWTA Repatriation Scheme. This guarantees that you will be returned to your departure point in the UK if we become insolvent whilst you are outside the UK on any tour in this brochure except in the case of packages taken wholly within the UK.

## WHEN DO I NEED TO PAY FOR MY HOLIDAY AND HOW MUCH?

At the time of booking you will need to pay a deposit for each person in your party. The balance is due 6 weeks prior to departure, unless travelling overseas. If you book within our balance due period, you will need to pay the total holiday cost at the time of booking. If you do not pay the outstanding balance for your holiday on time we shall cancel your booking and retain your deposit. Where optional items are purchased as part of the tour package these are payable on the balance due date except where items have been specifically purchased for you. In this case the cost will be payable at a separate date notified to you and will not normally be refundable unless we obtain a refund from the supplier we use.

## CAN YOU CHANGE THE PRICE OF MY HOLIDAY AFTER YOU HAVE ISSUED THE CONFIRMATION OF BOOKING?

We guarantee that once you have booked your holiday, the price will not be changed.

## CAN I CHANGE MY HOLIDAY ARRANGEMENTS?

After we have issued our booking confirmation we will do our best to accommodate any changes you may want to make but we cannot guarantee to do so. Any changes must be notified to us in writing and signed by the person who signed the booking form. If we are able to make the changes, an amendment fee of £10 per booking per occasion will be payable, plus any additional charge for the facilities requested. Any significant alteration after the balance due date will be treated as a cancellation of the original booking. A significant alteration would include a change of departure date, holiday or hotel, or number of people travelling.

## CAN I TRANSFER MY BOOKING TO SOMEONE ELSE?

If any person on a package holiday is prevented from travelling, the company will agree to that person's booking being transferred to another person who satisfies all the conditions applicable to the package, subject to both persons accepting joint and several liability for full payment of the package price and the company's charge for confirming the transfer and any additional costs arising from the transfer. The company must be given reasonable notice of the transfer request, which is considered to be at least 14 days prior to the outward departure date and a £10 administration charge will be payable.

## WHAT HAPPENS IF I CANCEL MY HOLIDAY?

You or any member of your party may cancel at any time, provided that the cancellation is made by the person who made the booking and is communicated to our office in writing. If cancellation is due to events which are the fault or wilful decision of the customer, BTC Ltd. shall be entitled to retain as much of the payment as is needed to cover its reasonable costs and losses caused by withdrawal. BTC Ltd. shall take all reasonable steps to keep its costs to a minimum. Your cancellation will take effect from the date we receive written confirmation of your cancellation. You must also return any tickets or vouchers that you have received. A reduction in room occupancy may increase the charges for the remaining passengers by the application of supplements for low occupancy of rooms.

## SCALE OF CANCELLATION CHARGES

Period before departure within which written %	Amount of cancellation charge as a %
cancellation of holiday is received	
More than 42 days	Deposit
42 - 29 days	50%
28 - 15 days	85%
14 - 1 days	100%
Departure date or later including voluntary termination whilst on holiday	100%

## WHAT HAPPENS IF YOU CHANGE OR CANCEL MY HOLIDAY?

In view of the fact that brochures are necessarily prepared sometime in advance, advertised facilities may be changed. Therefore changes may be made to the particulars contained in this brochure at any time before the contract with you is made. In these circumstances we will notify you of such changes prior to confirmation of your booking. Most of these changes are likely to be minor and we will do our best to keep you informed. If, after booking and before departure, we make a significant change to your holiday you will have the option of withdrawing from the holiday without penalty or alternatively you may transfer to another holiday without paying an administration fee. A significant change would include a change in departure date, location of resort or quality of hotel (excluding single overnight hotels on touring holidays), cancellation by BTC Ltd because of insufficient numbers (below twenty). On all our holidays to the continent we reserve the right to use either a ferry or the Channel Tunnel for the short crossing between England and France.

If you withdraw from the holiday because we have made a significant change or if we have to cancel your holiday for any reason other than non-payment by you, we will offer you the choice of:- A comparable replacement holiday if available OR a replacement holiday of lower quality together with a refund of the price difference OR a full refund of the money you have paid. When we have notified you of the changes and options available, you must tell us your decision as soon as possible and within any timescale we may need to set bearing in mind the need to safeguard the holiday arrangements of other customers.

## WHAT DO I NEED TO DO IF I HAVE TO COMPLAIN?

If you have a complaint during your holiday, you should tell our driver / representative at the earliest opportunity so that they can do their utmost to resolve the problem immediately. If, on your return from holiday, you remain dissatisfied you should write within 14 days to our office. In your letter you will need to tell us the name of the holiday hotel and the departure date. In the event that you do not tell us in that period this may affect the company's ability to investigate complaints and may impact on the way that your complaint is dealt with.

## HEALTH AND SAFETY ON HOLIDAY

Some people may be at risk from discomfort or deep vein thrombosis (DVT) if they remain immobile on a journey for a long period of time. If you are planning to undertake a coach journey of more than 3 hours you should consult your doctor if you have ever had DVT or pulmonary embolism, a family history of clotting conditions, cancer or treatment for cancer, a stroke, heart or lung disease or if you have had major surgery in the last 3 months. During the journey we will provide comfort stops as frequently as possible. During these stops you are encouraged to get off the coach and walk around. Exercise reduces discomfort, which may be caused by periods of immobility.

## NO SMOKING POLICY

We operate a strict no smoking policy on all our coaches. Comfort stops are made en-route. The smoking policy of other carriers and suppliers will vary. Please be aware that some hotels are also non-smoking, you must abide by their regulations.

## PICK UP POINTS, ITINERARIES, TRAVEL DOCUMENTS AND PASSPORTS

You are responsible for ensuring that you are at the correct departure point at the correct time, with the correct documents and we cannot be held liable for any loss or expense suffered by you or your party because of an incorrect passport or late arrival at the departure point. Approximately one week prior to departure we will send you a confirmation of your pick-up point, seat numbers and time of pick-up together with luggage labels. Certain travel documents may have to be retained by us, your driver will then issue them to you at the relevant time.

If you are a British Citizen travelling outside the United Kingdom you must have a full UK passport valid for a minimum of six months after your scheduled date of return. Non-UK citizens must seek passport and visa advice from the consulates of the countries you plan to visit prior to making a booking for one of our holidays. The name on the passport must match the name on the ticket. If someone in your party changes name after the booking is made, you must tell us immediately so that we can issue the ticket in the new name.

Brent Thomas Coaches Ltd reserves the right to modify itineraries to conform with requests from the competent authorities in the United Kingdom and any other sovereign state through which the tour will operate. Any changes will be notified as soon as possible. Included excursions are detailed on the relevant brochure page and refunds will not be made for any excursion not taken. Admission fees to buildings, grounds etc are not included in the price of the holiday unless otherwise stated on the relevant page.

## WHAT HAPPENS IF I AM DELAYED?

Your travel insurance may cover you for some delays. For full details please check your insurance schedule.

## DO I NEED TO TAKE OUT TRAVEL INSURANCE?

We strongly advise you to take out travel insurance to cover Covid, medical and repatriation costs, personal injury, loss of baggage and cancellation charges. If you do not have adequate insurance and require our assistance whilst on holiday, we reserve the right to reclaim from you any medical, repatriation or other expenses that we may incur on your behalf, which would otherwise have been met by insurers.

## DATA PROTECTION ACT

In order to process your booking and to ensure that your travel arrangements run smoothly and meet your requirements we need to use the information you provide such as name, address and special needs etc. We take full responsibility for ensuring that proper measures are in place to protect your information. We must pass the information onto the relevant suppliers, such as hotels etc. The information may also be supplied to public authorities such as customs / immigration if required by them, or as required by law. If we cannot pass this information on to the relevant suppliers, we cannot provide your booking. In making this booking, you consent to this information being passed on to the relevant persons. Your data controller is Brent Thomas Coaches Ltd. You are entitled to a copy of your information held by us. If you would like to see this please contact us. We retain your full contact details and other information in secure files and electronic storage facilities. We may use this information to contact you by mail, telephone or electronic means.





Book in for  
MOT's and repair work  
Class 4, 5 & 7  
Tel 01443 431240  
Slots available  
@ Brent Thomas Coaches

**BRENT THOMAS COACHES LTD  
FOUNDRY ROAD INDUSTRIAL ESTATE  
TONYPANDY  
RHONDDA CYNON TAF  
CF40 2XD**

**TEL: 01443 431240**

**E-mail : [info@brentthomascoaches.com](mailto:info@brentthomascoaches.com)  
[www.brentthomascoaches.com](http://www.brentthomascoaches.com)**

***Brent Thomas Coaches Ltd  
Company Registration Number 5749506***