

Coaches Ltd.

Brent Thomas



Coach Holidays 2026



Dear Traveller

Another year where we would like to thank all of our loyal customers and welcome new friends. Introducing some special events throughout the year but also offering everyone's favourite destinations for their annual trips.

Don't forget to pop in and pick up a flyer where we have additional holidays and day trips offering exceptional value and choices.

Kind regards
From us all at Brent Thomas Coaches

Why Travel With Brent Thomas Coaches?

You can enjoy executive coach travel throughout your holiday in one of our modern fleet of coaches with professional, experienced and friendly drivers. At extremely busy times we may have to hire in coaches from other companies which will be of a similar standard with experienced drivers.

All our UK hotels are carefully chosen and inspected by either a member of staff or a reputable agent with whom we deal and offer en-suite accommodation, dinner, bed and breakfast. Our London weekend breaks and some city breaks may only offer bed & breakfast. Our accommodation ranges from 2* budget hotels which in our opinion offer value for money to 4* luxury hotels as our aim is to offer our customers a wide choice of holidays that suit all tastes and budgets. To assist with costs, overnight stay hotel meals are designed to cater for a large group eating together at the same time, choices are basic and limited. This may not be suitable for everyone. Most hotels would have an alternative option via a bar menu or room service to purchase at your own expense should the inclusive meal not meet your personal preference.

We believe that we probably operate one of the best feeder systems in the area where we can guarantee that you will not be sitting on the coach picking up throughout the valleys and villages for over 2 hours. We send mini buses to different departure points to meet the main coach at a central point and we aim to have you on your tour coach within 1 hour from being picked up. Pick up points are refined every year. Can we please remind our customers to be at their pick up point on time and to be aware that a taxi or mini bus from a private company may pick you up as it is not always possible to send a Brent Thomas Coach to every departure point.

We can tailor make holidays for groups and organisations to suit your requirements. Please do not hesitate to contact us if you are looking for a specific holiday, which is not advertised in our brochure. Our representatives will be pleased to come and visit your group to discuss your requirements for your proposed tour and offer information and advice so that you can get the most from your holiday.

Evening entertainment is provided most nights in a lot of our seaside hotels, if numbers but we cannot guarantee live music every night as this is at the discretion of the hotel management.

Excursions are included at no extra charge but may be changed at our discretion due to weather and seasonal events

These will be as follows:

2 - 3 day tours	No excursions
4 day tours	1 half day excursion
5 day tours	2 half day excursions
8 day tours	3 half day excursions

We ask our customers to notify the office in advance if they wish to bring a wheelchair/walker with them on their holiday. Due to the high demand of customers bringing scooters with them in the past we recommend that they are hired at the resort as the luggage space on the coaches is very limited. Micro scooters that fold into their own case and can be lifted by the customer can only be accepted if they have been approved at the time of booking. This will need to be printed on your confirmation and must be requested each holiday. We cannot accept class 3 scooters as these are too large and heavy to lift. Please be aware if a feeder vehicle is your transport to the main coach there is restricted luggage room and therefore a scooter may not be able to be accepted.

We remind our customers how important it is to take out insurance for their holiday in case of any unforeseen circumstances.

Porterage has been withdrawn from many hotels so please ensure that you are able to take your suitcase to your room independently.

Please Remember

Can we please remind all our customers of our luggage policy. Please bring one small/medium sized suitcase per person, not one large suitcase per couple. We limit the size of the suitcases due to luggage space available on the coach and due to health and safety regulations they can be weighing no more than 20kg for our drivers and hotel staff to handle.



Small Suitcase
Approx Size 18'

Medium Suitcase
Approx Size 24'

Please bring either a small or medium size suitcase per person weighing no more than 20kg

Holiday Insurance

We remind you that your accommodation booking is a legally binding contract. In the event of cancellation we are entitled to retain your deposit and ask for a further payment to compensate us for our loss. For your protection we suggest you take advantage of holiday cancellation insurance. We regret cancellations for whatever reason may be chargeable. We therefore recommend for peace of mind you take out cancellation insurance through an intermediary who is authorised and regulated by the Financial Services Authority.

SCALE OF CANCELLATION CHARGES

Period before departure within which written cancellation of holiday is received	Amount of cancellation charge as a %
More than 42 days	Deposit
42 - 29 days	50%
28 - 15 days	85%
14 - 1 days	100%
Departure date or later including voluntary termination whilst on holiday	100%

How To Book Please Read Carefully

Please check availability by telephoning or visiting one of our shops/market stalls listed below.

After your initial enquiry and verbal room reservation, we will hold the room for a maximum of 7 days. At the end of that period the room will automatically be released for re-sale. A deposit of £40 per person must be paid at the time of booking. We require a deposit of £150 - £250 per person for all European and Jersey tours. European tours also require a second deposit before final balance is due. Please note that deposits are non-refundable and non transferrable. Please also note that this brochure should be read in conjunction with our full terms and conditions enclosed. Further copies can be obtained from our office.

Carefully choose a departure point nearest to your home from the list in the brochure. Please note once a departure point has been chosen, any changes must be authorised by BTC's Ltd office only and must be made in writing at least 14 days before the departure date (still may not be guaranteed).

Brochure Accuracy - We take every care to ensure at the time of going to press the details in this brochure were accurate regarding holiday prices. Additional charges such as single room and sea view supplements which are beyond BTC's control need to be checked at the time of booking. Special event dates including shows and Christmas Markets are beyond our control and we will endeavour to notify customers of any changes as soon as we are aware.

We accept cash or cheques at all our shops and market stalls. You can also make online bank payments.

Please make all cheques payable to **Brent Thomas Coaches Ltd** and send them to:

Brent Thomas Coaches Ltd
Foundry Road Industrial Estate, Tonypanyd
Rhondda Cynon Taf. CF40 2XD

You can pay at one of our shops/market stalls:
Stall 74A Pontypridd Indoor Market, Pontypridd
6 Griffin Street, Newport
Brent Thomas, The Coach Stop, Aberdare Indoor Market
Brent Thomas, 13 Glebeland St, Merthyr

New Departure Points for 2026

MAERDY VALLEY

Maerdy Hall, Con Club & Cemetery
Ferndale North Road, Job Centre & Ferndale Clinic
Tylorstown Duke of York, Post Office & The Jubilee
Pontygwaith The Surgery & The Cosmo
Wattstown Days Newsagents
Ynshir Hall, The Eagle & The Baden
Porth Depot

TREHERBERT VALLEY

Treorchy Post Office
Pentre The Griffin & The Council Offices
Ton Pentre Freezer Centre
Gelli Weavers Garage & Post Office
Ystrad Sandy Bank & Post Office
Llwynypia Triple Crown garage & Hospital
Tonypany Square & The Co-Op
Penygraig Labour Club
Porth Depot & Square (Oakdale Chemist)
Llwynceilyn Spar

HOPKINSTOWN

Hopkinstown The Hollybush & Spar

CYNON VALLEY

Aberdare Bus Station (by the toilets)
Mountain Ash Railway Station & Town Hall
Miskin The New Bridge
Navigation Pub, Abercynon

MERTHYR TYDFIL

Merthyr Tydfil Castle Hotel
Pentrebach Bus Stop by Sixty Sixty Coach Depot
Nelson Bus Station

TAFF'S WELL

Veolia
McDonalds, Nantgarw

BLACKWOOD AREA

Blackwood Bus Station
Bargoed Bus Station
Ystrad Mynach Bus Station
Caerphilly Castle Court outside Post Office

IF NUMBERS ARE LOW, WE RESERVE THE RIGHT TO CHANGE A PICK UP POINT DUE TO OPERATIONAL DIFFICULTIES.

PLEASE BE READY 10 MINUTES PRIOR TO YOUR PICK UP TIME AS WAITING WILL CAUSE DELAYS.

ENSURE CONTACT DETAILS ARE KEPT UP TO DATE INCLUDING MOBILE NUMBERS.

New Departure Points for 2026

PONTYPRIDD AREA

Sardis Road New Bus Stop
Ynysybwl The Cemetery, Robertstown & New Road
Coed Y Cwm Bus Stop Main Road
Glyncoch Bus Stop Main Road
Cilfynydd The Commercial & The Royal Oak
Broadway Bowns & Bus Stop by the shops
Rhydyfelin Malvern Tyres & Glantaff School
Rhydyfelin Ebenezer & The Duffryn
Hawthorn Ambulance Station & Hawthorn Inn
Hawthorn Enterprise Foundry Hill
Upper Boat Do It All (Dunelmn)

TONTEG AREA

Llantwit Farde The Crown & New Inn
Tonteg Road Runner, The Hollybush & Fina Garage

LLANTRISANT AREA

Mouchak-Indian
Coed Ely Club
Talbot Green Bus Station
Llantrisant Penny Farthing & The Pet Shop
Beddau P.O. Welfare, Ty Nant & The Woodlands

CARDIFF

Cardiff Gate Services

NEWPORT

Outside Admiral Insurance-opposite Railway Station
Magor Services Coach Park

(ON TOURS 4 DAYS AND OVER) BLAENAU GWENT

Tredegar Lidl Bus Stop
Rhymney Library
Ebbw Vale Bus Station
Brynmawr Bus Station

**PLEASE NOTE ONCE A DEPARTURE POINT HAS BEEN CHOSEN, ANY ALTERATIONS MUST BE AUTHORISED BY BTC'S OFFICE AND MUST BE CONFIRMED IN WRITING AT LEAST 14 DAYS PRIOR TO THE DEPARTURE DATE.
THERE WILL BE A £15 ADMIN CHARGE.**



Departure Dates

Date	Destination	Days	Page No.
January			
9th	Babbacombe	4	12
10th	Somerset Shopping Weekend	2	41
16th	Paignton	4	36
17th	Somerset Shopping Weekend	2	41
17th	Mamma Mia - The Party	2	44
19th	Torquay	5	48
19th	Babbacombe	5	11 & 12
19th	Weston Super Mare	5	53
23rd	Torquay	3	48
26th	Torquay	5	48
26th	Eastbourne	5	20
26th	Llandudno	5	32
30th	Torquay	3	48
February			
2nd	Torquay	5	48
2nd	Babbacombe	5	11 & 12
2nd	Isle of Wight	5	27
7th	Torquay	2	50
7th	Mystery	2	35
8th	ABBA Voyage	2	43
9th	Paignton	5	36
9th	Mystery	5	35
13th	Newquay	4	33
16th	Newquay	5	33
16th	Cumbria	5	29
17th	Eastbourne	5	20
20th	Weston Super Mare	4	53
20th	Weymouth	4	56
23rd	Eastbourne	5	21
23rd	Isle of Wight	5	26
23rd	Weston Super Mare	5	54
23rd	Pontins Sand Bay	5	35
27th	Weymouth	3	55
27th	Eastbourne	4	20
28th	Torquay	3	48



March

2nd	Babbacombe	5	12
2nd	Llandudno	5	31
2nd	Tenby	5	46
2nd	Torquay	5	48
5th	6 Nations Ireland	4	7
6th	Eastbourne	4	20
9th	Weymouth	5	55
9th	Eastbourne	5	20
9th	South Coast Explorer	5	46
9th	Llandudno	5	32
9th	Scarborough	5	38
9th	Criccieth	5	14
13th	Babbacombe	4	12
13th	Weston Super Mare	4	53

Departure Dates

Date	Destination	Days	Page No.
March			
14th	Torquay	3	48
16th	Isle of Wight	5	26
16th	Scotland	6	40
18th	Falmouth	5	23
20th	Murder at the Palace	4	36
20th	Torquay	4	48
21st	Weymouth	2	55
22nd	ABBA Voyage	2	43
23rd	St Agnes, Cornwall	5	42
23rd	Babbacombe	5	11 & 12
23rd	Torquay	5	47 & 48
23rd	Coast & Country	5	13
28th	Worcester & Gloucester	2	41
30th	Babbacombe	5	11
30th	Torquay	5	49
30th	Isle of Wight	5	27



April

2nd	Eastbourne	5	20
3rd	Weymouth	4	55
3rd	Torquay	4	48
4th	Ilfracombe	5	25
6th	Weston Super Mare	5	54
10th	Weston Super Mare	4	53
10th	Torquay	3	48 & 49
13th	Paignton	5	36
13th	Babbacombe	5	12
13th	Newquay	5	33
13th	Torquay	5	48
15th	Porthcawl	5	34
17th	Weymouth	4	55
17th	Llandudno	4	32
17th	Weston Super Mare	4	53
20th	Llandudno	5	31
20th	Warners Littlecote House	5	52
20th	Torquay	5	49
25th	London Afternoon Tea	2	30
26th	Eastbourne	5	20
27th	Babbacombe	5	12
27th	Weymouth	5	55
27th	Falmouth	5	23
27th	Morecambe	5	41



May

2nd	Isle of Wight	5	26
2nd	Torquay	2	48
4th	Weymouth	5	55
4th	Paignton	5	36
4th	A Tyne for Adventure	5	8
4th	Isle of Wight	5	26
4th	Torquay	5	49
7th	RHS Malvern Spring Festival	2	37
8th	Paignton	4	36
8th	Torquay	4	49

Departure Dates

Date	Destination	Days	Page No.
May			
11th	Babbacombe	5	11
11th	Torquay	5	48
13th	Weymouth	5	56
15th	Weymouth	4	55
15th	Weston Super Mare	4	53
15th	Tenby	4	46
18th	Weston Super Mare	5	54
18th	Southport	5	38
22nd	Babbacombe	4	12
23rd	Weymouth	2	55
23rd	South Coast Explorer	5	46
25th	Eastbourne	6	20
25th	Bournemouth	5	13
27th	Llandudno	5	32
27th	Scarborough	5	38
30th	Call the Midwife	2	13

June

1st	Weymouth	5	55
1st	Great Yarmouth	5	23
5th	Weston Super Mare	4	53
6th	A Taste of Indulgence	6	9
8th	Babbacombe	5	12
10th	Isle of Wight	5	27
12th	Weymouth	4	55
12th	Weston Super Mare	4	53
12th	Torquay	3	48
15th	Paignton	5	36
15th	Weston Super Mare	5	54
15th	Cumbria	5	29
15th	Torquay	5	48
19th	Weymouth Veterans Weekend	4	55
20th	Torquay	2	48
22nd	Warners Cricket St Thomas	5	51
22nd	Isle of Wight	5	27
22nd	Criccieth	5	47
24th	Porthcawl	5	34
26th	Weymouth	4	55
26th	Paignton	4	36
27th	Torquay	2	48 & 49
28th	Falmouth	7	23
29th	Babbacombe	5	11
29th	Warners Norton Grange	5	51
29th	Weston Super Mare	5	54
29th	Pontins Sand Bay	5	35

July

4th	Torquay	2	48
6th	Newquay	5	33
6th	Llandudno	5	32
8th	Ilfracombe	5	25
10th	Weston Super Mare	4	53
10th	Torquay	3	48
11th	Eastbourne	8	20
12th	Jersey	7	28

Departure Dates

Date	Destination	Days	Page No.
July			
13th	Llandudno	5	31
13th	Blackpool	5	11
13th	Babbacombe	5	11
13th	Weston Super Mare	5	54
13th	Torquay	5	49
17th	Babbacombe	4	12
18th	Isle of Wight	5	27
20th	Paignton	5	36
20th	Weston Super Mare	5	53
22nd	Llandudno	5	32
24th	Llandudno	5	32
25th	Torquay	2	48 & 49
27th	Babbacombe	5	11
27th	Isle of Wight	5	26
27th	Skegness	5	42
27th	Torquay	5	48
27th	Coast & Country	5	13



August

1st	Weymouth	8	55
3rd	Southport	5	38
3rd	Ireland	5	25
7th	Torquay	3	48
8th	Eastbourne	8	20
9th	Emmerdale - Tales in the Dales	3	43
10th	Babbacombe	5	11 & 12
10th	Blackpool	5	11
10th	Warners Hayling Island	5	52
10th	Weston Super Mare	5	54
10th	Lytham St Annes	5	29
14th	Paignton	4	36
14th	Weston Super Mare	4	53
15th	Torquay	2	49
17th	Isle of Wight	5	26
17th	Lake District	5	29
19th	Exmouth	5	22
19th	Weymouth	5	56
24th	Weston Super Mare	5	53
24th	Liverpool	5	30
24th	Torquay	5	48
27th	Mamma Mia - The Party	2	44
28th	Babbacombe	4	12
28th	Torquay	4	48
29th	Weymouth	2	55
31st	Weymouth	5	55
31st	Eastbourne	6	20
31st	Weston Super Mare	5	54
31st	Pontins Sand Bay	5	28
31st	Yorkshire Highlights	5	27

Departure Dates

Date	Destination	Days	Page No.
September			
4th	Paignton	4	36
5th	Torquay	2	48 & 49
6th	Loch Lomond	7	39
7th	Llandudno	5	31
7th	Isle of Wight	5	26
7th	Weston Super Mare	5	54
11th	Weston Super Mare	4	53
11th	Paignton	4	36
11th	Llandudno	4	32
12th	Porthcawl	5	34
14th	Isle of Wight	5	27
16th	South Coast Explorer	5	46
16th	Scarborough	5	38
18th	Babbacombe	4	12
19th	Weymouth	8	55
19th	Isle of Wight	5	26
19th	Worcester & Gloucester	2	41
20th	Eastbourne	6	20
20th	ABBA Voyage	2	43
21st	Torquay	5	48
25th	Paignton	4	36
28th	South East Ireland	5	10
28th	Falmouth	5	23
28th	Babbacombe	5	11

October

2nd	Weston Super Mare	4	53
2nd	Torquay	3	48
5th	Babbacombe	5	12
5th	Warners Norton Grange	5	51
5th	Llandudno	5	32
5th	Torquay	5	48
9th	Paignton	3	36
9th	Weston Super Mare	4	53
10th	Somerset Shopping Weekend	2	41
10th	Ilfracombe	5	25
16th	Paignton	4	36
16th	Blackpool	4	11
16th	Lytham St Annes	4	29
17th	Somerset Shopping Weekend	2	41
17th	Criccieth	5	14
19th	Weymouth	5	55
19th	Eastbourne	5	20
19th	Babbacombe	5	11
19th	Torquay	5	48
19th	Great Yarmouth	5	23
19th	Southport	5	38
19th	Yorkshire Highlights	5	57
23rd	Hauntingly Delicious	3	24
26th	Blackpool	5	11
26th	Torquay	5	49
26th	Skegness	5	42
26th	Liverpool	5	30
30th	Babbacombe	4	12



Departure Dates

Date	Destination	Days	Page No.
November			
2nd	Eastbourne	5	20
2nd	Morecambe	5	41
2nd	Blackpool	5	11
2nd	Weston Super Mare	5	54
2nd	Newquay	5	33
2nd	Lytham St Annes	5	29
6th	Paignton	4	36
6th	Eastbourne	4	21
6th	Torquay	3	48



9th	Weymouth	5	55
9th	Llandudno	5	31
9th	Tenby	5	46
9th	Torquay	5	48
13th	Weston Super Mare	4	53
13th	Eastbourne	4	20
13th	Weymouth	4	56
15th	Trafford Centre & Manchester	2	59



16th	Weston Super Mare	5	54
16th	Lake District	5	29
16th	Llandudno	5	32
16th	Weymouth	5	56
16th	Pontins Sand Bay	5	35
20th	Babbacombe	4	12
20th	Weston Super Mare	4	53



23rd	Paignton	5	36
23rd	St Agnes, Cornwall	5	42
23rd	Torquay	5	48 & 49
23rd	Bournemouth	5	13
27th	Weston Super Mare	4	53
27th	Torquay	3	48
28th	Gloucester & Worcester	2	41
30th	Spirited Cheer - Warwick	5	45
30th	Torquay	5	49
30th	Llandudno	5	32
30th	Exmouth	5	



Departure Dates

Date	Destination	Days	Page No.
December			
4th	Babbacombe	4	12
4th	Paignton	4	36
4th	Babbacombe	3	11
4th	Torquay	3	49
4th	Torquay	4	48
5th	London Shopper	2	58
6th	Longleat Festival of Light	2	58
6th	Christmas at Windsor Castle	2	57
6th	Scotland	6	40
6th	Trafford Centre & Manchester	2	59
7th	Weymouth	5	55
11th	Paignton	4	36
11th	Christmas at Blenheim Palace	2	59
11th	Torquay	4	49
11th	Torquay	3	48
14th	Torquay	5	48
Christmas			
23rd	Torquay	5	48
23rd	Llandudno	5	31
23rd	Babbacombe	5	11
23rd	Weston Super Mare	5	53
Twixmas			
27th	Paignton	4	36
27th	Weston Super Mare	4	53
27th	Babbacombe	4	11
27th	Torquay	4	48
New Year			
29th	Eastbourne	5	20
29th	Skegness	5	42
30th	Weymouth	4	55
30th	Weston Super Mare	4	53
30th	Torquay	4	48 & 49

Gift Vouchers Available

* The perfect present*

* Allocated directly to accounts*

Can be used towards a balance or a new booking

Any amount can be purchased

Personalised gift voucher for any occasion

Ask a member of staff for details



6 Nations Ireland v Wales 2026

Our annual rugby event not to be missed - join us for hospitality that is second to none while we're staying in Dooley's Hotel, Waterford in Ireland. With comfortable en-suite accommodation with colour tv and tea/coffee making facilities. The weekend will be at leisure for shopping, sightseeing and watching the match. Please note tickets for the match are not included.

Departure Date:

March 5th 4 days £395
Single Supplement £172

Price includes:

All coach travel/En-suite accommodation
Return ferry crossings/
Time at leisure in during the weekend to watch the rugby

* We strongly advise customers to take out holiday insurance. Ferry crossings can be disrupted for various reasons and we cannot be held responsible for any consequences or extra costs resulting from this.



6 Nations Scotland v Wales 2027

The break will be at leisure for shopping, sightseeing and watching the match. Please note tickets for the match are not included.

Departure Date:

Date to be announced 4 days £TBC
Single Supplement £TBC

Price includes:

All coach travel/En-suite accommodation/
Bed & Breakfast
Time at leisure during the weekend to watch the rugby

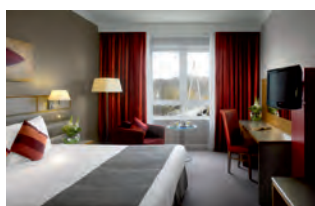
Please telephone to add your details to the waiting list

A Tyne for Adventure

Zoom through fascinating periods of change at the living, breathing museum, Beamish, from the industrious Georgians to the transformative 40s and 50s. Savour a taste for the north as you pop by the Sun Inn Pub and see traditional sweet production at the Jubilee Sweet Shop. From the soaring Angel of the North to the fabulous Seaton Delaval Hall, take a 'propa lush' coach journey through Newcastle's rich history, stunning coastlines, and architectural wonders in the heart of the North East.

Raddisson Blu Hotel

Nestled on a lovely bend of the River Wear in the centre of Durham, the 4-star Radisson Blu Hotel provides an idyllic base, just a short walk from major tourist attractions like Durham Castle, Durham Cathedral and the charming Old City. Bedrooms are modern and stylish with flat-screen plasma satellite TV, free internet access, individual climate control, iron and ironing board, safe and tea/coffee making facilities. The contemporary restaurant is complemented by excellent city views. You can relax in the lounge and bar area or enjoy the excellent leisure facilities including a hot tub, sauna and steam room, state-of-the-art gymnasium and swimming pool.



Price Includes:

All coach travel/En-suite accommodation/4 nights Dinner, Bed & Breakfast

Departure Date:

May 4th	5 days	£540
Single Supplement		£120

Beamish, the Living Museum of the North

Enter a world-famous and award-winning open-air museum, affectionately known as the living museum of the north. Get up-close to a recreated Northeast history from 1820 all the way to the 1950s.

Meet knowledgeable volunteers and staff who are decked out in exceptional, historical costume. Travel by tram or old-fashioned bus from the Edwardian Town and Pit Village, complete with original drift mine to at Home Farm and Pockerley Old Hall. You'll find many a unique item in the open stores –donated by the public to best reflect their stories and experiences. Why not have a quick tippie at the Sun Inn Pub or try some traditional sweets at the Jubilee Sweet Shop?



Newcastle, Panorama & Coastal Coach Tour, including Seaton Delaval Hall

Do you know about Tynemouth? It's the UK's 4th best coastal town (Which, 2024) praised for its perfect combination of "sand, surf and super-fresh seafood". Its mile-long expanse of shoreline is blessed with perfect golden sands and a deep inky-blue sea home to both seals and dolphins. Head to the iconic Angel of the North, famed for having a wingspan larger than the Leaning Tower of Pisa. Admire the Baltic Art Gallery and it's stunning Tyneside views then marvel at the award-winning Millennium Bridge and Sage Gateshead. Discover the Geordie jewels with a panoramic tour of the city, featuring the commanding castle, the imposing cathedral, and the hallowed grounds of St. James' Park Stadium.

Behold spectacular views over the North Sea, from Cullercoats and its 19th-century muses, up to Whitley Bay's golden sandy beach and striking view of St. Mary's Lighthouse.



Finally, uncover 'Gay Delavals' at Seaton Delaval Hall, devised by Sir John Vanbrugh, architect of Blenheim Palace and Castle Howard. Picture their extravagant 18th-century lifestyle set amidst the hall's dramatic English Baroque design and walled gardens.

A Taste of Scottish Indulgence

Savour Scotland's finest chocolate, gin, heritage and hospitality on a journey up north! Enjoy the peaceful surroundings of private wooded grounds overlooking the River Tay at the Invercarse Hotel, just three miles from Dundee city centre. Break the ice with an introductory session of lawn bowling at St. Andrews Bowling Club, or explore the charming seaside town on a guided walking tour, followed by a light lunch at the club's newly renovated clubhouse. Step into the past with a visit to the historic village of Glamis, where a tasting at The Bothy Experience introduces you to local flavours before a guided tour of the magnificent Glamis Castle. Finally, indulge in the rich flavours of multi-award-winning gourmet chocolate with a tasting at Iain Burnett Highland Chocolatier.



Invercarse Hotel

Set in a tranquil spot within private wooded grounds overlooking the Tay Estuary, the Invercarse Hotel is just three miles from Dundee city centre. Formerly a 19th-century mansion, it offers 68 well-appointed rooms and retains many of its original features, including its classical ballroom. The hotel's in-house restaurant, The Redwood—named after the two giant redwood trees flanking either side—serves locally sourced Scottish

classics with an incredible view of the River Tay.

Price Includes:

All coach travel/En-suite accommodation/5 nights Dinner, Bed & Breakfast

Departure Date:

June 6th	6 days	£800
Single Supplement		£175



Iain Burnett Highland Chocolatier

Visit a magical chocolate shop in the small Highland village of Perthshire and enjoy a guided tasting flight of Master Chocolatier Iain Burnett's multi-award-winning Velvet Truffle, the result of three years of refinement and 120 variations. Crafted from rare cocoa from the volcanic island of São Tomé and the finest local ingredients, these luxurious chocolates offer unique flavours and textures to delight any palate. Gain insight into Iain Burnett's journey to mastery as he honed his craft under the finest French, Belgian, and Swiss chocolatiers to develop his signature style.

Please note that the tasting will take place on board the coach, followed by an opportunity for guests to visit the chocolate shop.

Glamis Castle

Childhood home of HRH Queen Elizabeth, The Queen Mother, this 650-year-old fortress is renowned for its distinct architecture and imposing majesty. The incredible family home has witnessed everything from Royal births to being the setting for Shakespeare's Macbeth. Chart its evolution during a guided tour of ten distinctly regal rooms before stepping into the illustrious grounds, incorporating everything from park land to the formal Italian Garden.



Gin Bothy Experience

Nestled on the doorstep of Glamis Castle, the award-winning Gin Bothy shares the captivating tale of Scottish Bothies. With a natural respect for the mountains, rivers, and farmlands surrounding them, every bottle of their fruit infused gin is poured by hand, using only locally sourced produce including fresh Scottish berries and rhubarb. We invite you to take a journey through the hills, savouring a spirit that blends past and present in a cosy and rustic tasting room.

A Craic'ing Time in South East Ireland

Fun-filled Irish getaway! Enjoy a fun day out in Kilkenny, the ancient capital of the kingdom of Ossory. Step inside the impressive Kilkenny Castle, one of Ireland's best-preserved castles, with over 800 years of history and grand Victorian interiors. Then sit back and relax on a nostalgic 30-minute tour aboard the Kilkenny Road Train, taking in the city's finest buildings and landmarks, including St. Canice's Cathedral and the Old Courthouse.

Riverside Park Hotel

The Riverside Park Hotel, in Enniscorthy town centre, has 100 luxurious rooms equipped with pillow top mattresses, TVs, ironing facilities and tea/coffee making facilities, free Wi-Fi and 24-hour room service. The hotel boasts 2 restaurants, The Moorings, offering classic cuisine or The Alamo Steakhouse offering a wide variety of dishes. The Prom Bar has charming views of the River Slaney. The Riverside Leisure Club includes a fully-equipped gym, pool, sauna, steam room and hot tub. Enniscorthy Castle and the town centre are 550 yards from the hotel.

Price Includes:

All coach travel/En-suite accommodation/4 nights Dinner, Bed & Breakfast / Return ferry crossings

Departure Date:

September 28th	5 days	£540
Single Supplement		£108



Kilkenny Castle incl Guided Tour

Visit the jewel in the crown of Kilkenny, one of Ireland's most iconic landmark cities.

Kilkenny Castle is among the oldest and best-preserved castles in the country, having been continuously occupied for over 800 years since its founding shortly after the Norman conquest. Your expert guide will lead you through the castle's opulent Victorian interiors, including the impressive 19th-century Picture Gallery, adorned with fine paintings and 17th-century tapestries.

Learn about the powerful Butler family, who resided here for nearly six centuries, and their enduring legacy.

The castle is set within 50 acres of picturesque parkland, with formal terraced rose gardens, woodlands, a man-made lake, and abundant wildlife.

Kilkenny Road Train

Discover Kilkenny's finest buildings and landmarks on a nostalgic 30-minute, fully narrated tour aboard the Kilkenny Road Train.

Departing from Kilkenny Castle, the tour takes you through Ireland's medieval capital, showcasing its beautifully preserved architecture and historical sights, including St. Canice's Cathedral, St. Francis Abbey Brewery, and the Old Courthouse.



Babbacombe (continued)

Babbacombe is situated in the quieter area of Torbay with its own promenade and gardens, enjoying superb coastal views across Lyme Bay, is an ideal location for a relaxing, peaceful break. There are two beaches, a harbour and the historic Babbacombe Railway, one of the few original working funicular railways still in existence today. You will also find the world famous model village here, the perfect opportunity for some miniature photographs. And don't miss the opportunity to see a show at the Babbacombe Theatre where highly acclaimed variety show star the very best of rising new talent since 1986. As one of the South West's only unsubsidised theatres, the thriving venue promises to ensure that the 2026 season will continue to offer the best programme of entertainment throughout the year, with something to suit all genres.

The Babbacombe Hotel

Join us at the 80 roomed seafront hotel with en-suite rooms offering friendly and comfortable surroundings with beautiful sea views. The Babbacombe Hotel enjoys a level position directly on the sea front overlooking the famous Babbacombe Downs with far reaching views across Lyme Bay, many of the bedrooms have stunning views and private balconies. All public areas are situated on the ground floor and the hotel has a lift to most bedrooms.

Price Includes:

All coach travel/En-suite accommodation/Dinner, Bed&Breakfast/Evening entertainment most nights-except Wed/Excursions

Departure Dates

January 9th	4 days	£190	incl 50% Bar Deal
January 19th	5 days	£235	incl 50% Bar Deal
February 2nd	5 days	£250	incl 50% Bar Deal
March 2nd	5 days	£270	incl 50% Bar Deal
March 13th	4 days	£230	Tribute Weekend
March 30th	5 days	£290	
April 13th	5 days	£290	
April 27th	5 days	£290	
May 22nd	4 days	£265	
June 8th	5 days	£380	
July 17th	4 days	£320	
August 10th	5 days	£400	
August 28th	4 days	£320	
September 18th	4 days	£320	
October 5th	5 days	£320	
October 30th	4 days	£280	Tribute Weekend
November 20th	4 days	£250	Turkey & Tinsel
December 4th	4 days	£250	Turkey & Tinsel



Single Supplement	£5 per night
Sea View Supplement	£10 per night, per room
Balcony/Patio Supplement	£20 per night, per room
Sea View/Balcony/Patio twin & double rooms only	



Excursions will be from the following depending on weather and seasonal events.

Newton Abbott Exeter Brixham Dawlish & Teignmouth

**Call the Midwife Tour -
Guided Walking Tour at Chatham Historic Dockyard
including cream tea**

Don't miss out on our annual tour of the hit series Call the Midwife, put yourself in the picture and explore where the real drama happens with a Call the Midwife Official Location Tour at The Historic Dockyard Chatham. Walk in the footsteps of Nurse Trixie Franklin, Sister Julienne and Dr Turner and explore where the real drama happens. The walking tour is led by your very own costumed midwife. Along the tour you'll recognise the cobbled streets and buildings of 'Poplar' plus iconic locations such as the Grosvenor Hotel and 'Chummy's Hill', where Nurse Noakes famously learnt to ride her bike. With a picture book to help trigger your memories, you'll see just how Neal Street Productions transform 400 year old Chatham dockyard into East London. The tour culminates with an exclusive Call the Midwife exhibition containing set, props and costumes. The tour lasts for 90 minutes. This is a walking tour with some uneven surfaces, please ensure you wear comfortable foot wear. It is wheelchair friendly but please advise us in advance if you have any mobility issues and we will accommodate you the best we can.

Price Includes:

All coach travel/En-suite accommodation/Dinner, Bed & Breakfast at an overnight stay hotel/Time at leisure in Windsor on Saturday/Entry to Chatham Historic Dockyard / Walking guided tour with costumed midwife/Cream Tea: Fruit Scone, Strawberry Jam, Clotted Cream, Chocolate dipped Strawberry, Pot of tea/Coffee

Departure Date:

May 30th	2 days	£195
Single Supplement		£38



Coast & Country - Bournemouth

Bournemouth is a delightful seaside resort with seven miles of clean, award winning golden beaches which offer a plethora of things to do including a mini-train ride taking you from Boscombe Pier westwards towards Alum Chine. You could stroll through the beautiful Lower Gardens or along the Pier. There is a fine shopping centre and plenty of restaurants in the town.



Durley Dean

A historic Victorian townhouse situated close to the beaches. The hotel's 115 en-suite bedrooms each feature a flat screen TV, tea/coffee making facilities and a work area. Private bathroom with a hairdryer. Relax in the heated indoor swimming pool or enjoy the peace and tranquillity of the sauna and steam room. Serving the best of Classic British cuisine in No.28 Restaurant to residents and visitors alike. Please note this is a cashless property.

Price Includes:

All coach travel/En-suite accommodation/
Dinner, Bed & Breakfast /evening entertainment



Departure Dates:

March 23rd	5 days	£315	incl 99p Bar Deal
May 25th	5 days	£380	
July 27th	5 days	£400	
November 23rd	5 days	£340	Turkey & Tinsel

Excursions will be from the following depending on weather and seasonal events.

Weymouth	Poole	Salisbury	Lyndhurst
----------	-------	-----------	-----------

Criccieth, Portmeirion & The Welsh Highland Railway

Criccieth lies on the south coast of the Llyn Peninsula, where the edge of Snowdonia National Park meets the sea. The spectacular castle dominates the town and is well worth a visit. It is an area for exploring, with unbeatable scenery and an abundance of attractions.

George IV Hotel (Leisureplex Hotels)

The hotel is in an excellent location on the High Street with views of the castle. There are several steps to the front of the hotel with a wheelchair lift from street level into reception. With level access from reception to all ground floor areas. The entertainment room with bar and dance floor where entertainment is provided most evenings is situated on the ground floor. Attractive restaurant, delightful intimate bar and comfortable lounges. Free Wi Fi in public areas. The 79 bedrooms have central heating and bath or shower with tea/coffee making facilities, internal telephone, hair dryer, TV with radio channels
A large lift serves all floors



Price Includes:

All coach travel/En-suite accommodation/Dinner, Bed&Breakfast /evening entertainment/excursions

Departure Dates:

March 9th	5 days	£320
Single Supplement		£60 - £92
Includes 1 free drink with dinner & Half Price Bar Deal		
October 17th	5 days	£320
Single Supplement		£60 - £92



Itinerary:

Caernarfon

Caernarfon is home to Wales' most famous castle and an UNESCO World Heritage Site. The castle is prominent in the skyline for all to see and the town's narrow streets has a choice of shops to browse. The stylish redeveloped waterfront Victoria Dock is a popular yachting marina set alongside the beautiful harbour looking out over the scenic Menai Straits and the Isle of Anglesey.

The Welsh Highland Railway & Porthmadog

The Welsh Highland Railway runs for 25 miles from Caernarfon, past the foot of Snowdon and the picture postcard village of Beddgelert towards the spectacular Aberglaslyn Pass. Leaving the mountains behind, the railway winds it's way through the streets of Porthmadog before entering the line's terminus at the harbour Station.

Portmeirion

Situated on a private peninsula overlooking stunning coastal scenery, the Italian Riviera meets rural Wales with a riot of colour and architectural styles at Portmeirion Village. Built by Sir Clough Williams-Ellis, Portmeirion is now one of Wales' most popular tourist



destinations. It is well known as the location for the 1960s cult TV series The Prisoner. It comprises a cluster of colour-washed buildings around a central piazza, scenic surroundings and extensive woodlands, two hotels, historic cottages, gift shops, spa & award winning restaurants. It has become known as one of the most successful British architectural projects of the twentieth century. Using an eco-friendly approach, he designed his architectural vision around a Mediterranean piazza. Endangered buildings and unwanted artefacts from all over the globe were transported and rebuilt to create a nest of loggias, grand porticoes and tiny terracotta-roofed houses, painted in bright colours.





We love a day trip and there are so many destinations, special events and markets that we like to visit throughout the year. So you do not miss out we produce up to date flyers regularly as we add extra dates and destinations. These are available from our local stalls, on social media or if you would like to keep up to date via email please use our aberdare@brentthomascoaches.com address to request daytrips and special offers and extra dates flyers.

Day trips need to be paid in full at the time of booking and are non refundable and non transferable due to limited availability. Events may be cancelled which are beyond our control.

Pick up points for 2026 are as follows....

- Tonypandy Square & Co-Op
- Penygraig Labour Club
- Porth Square (Police Station)
- Llwyncelyn Spar
- Hopkinstown Hollybush & Spar
- Sardis Road New Bus Stop
- McDonalds Nantgarw
- Newport Admiral Insurance

We also pick up at the following points with a feeder vehicle that will meet the main coach usually at McDonalds

- Merthyr Tydfil Castle Hotel
- Aberdare Bus Station
- Mountain Ash Town Hall

Highclere Castle - 'Downtown Abbey' Day Trip

Our eagerly awaited once a year, sell out day trip !!!!

Highclere Castle is a Grade I listed country house built in 1679 and largely renovated in the 1840s, with a park designed by Capability Brown in the 18th century. It is the country seat of the Earl of Carnarvon, a branch of the Anglo-Welsh Herbert family.

The setting for the television series 'Downtown Abbey' it became the most successful British costume drama since 1981. During your visit see the State Rooms, Gallery and Bedrooms which were used in the TV series. Experienced professional guides are on hand at various points in the Castle to assist visitors. Take time to wander around the Castle gardens at your own leisure. Includes all coach travel and entry.

Don't forget we have a waiting list too....

Departure Date:

May 28th £60

Includes entry to the Castle, Grounds and Egyptian Exhibition



**Check out our website for up to date day trips
Day trips need to be paid in full at the time of booking and
are non refundable and non transferable due to limited
availability.**

Day Trips 2026 (Limited Departure Points)

Special Events

Returning for 2026 due to popular demand



Sunday Lunch Club

When it's the wintery months and there's little chance of even seeing a neighbour to say 'hello' why not pop on the coach for a few hours out, sit back and relax, take in the scenery. The destination may be somewhere new or an old favourite but there won't be any dishes to wash, just the choice of what to eat and some friendly faces to have a chat together. Jump on board.....

Sunday 25th January	£60	includes 3 course Sunday Lunch
Sunday 22nd February	£55	includes 3 course Sunday Lunch

More Dates to be announced, ask to be added to the waiting list



Scrumptious Cream Tea & Seaton Tramway



The Seaton Tramway is a 2ft 9 in (838 mm) narrow gauge electric tramway in the East Devon district of South West England. The 3 Mile (4.8km) route runs alongside the Axe Estuary and the River Coly, running between the coastal resort of Seaton, the village of Colyford, and the ancient town of Colyton. For much of its route, it operates between the estuary and the Seaton Wetlands nature reserves, offering views of the wildlife of both.

The tramway operates over part of the former Seaton Branch Line, which closed in March 1966. It was established in 1970 by Claude Lane, founder of Modern Electric Tramways LTD,

So why not join us for this unique day out on the Seaton Tramway with stunning views along the way, stopping for a Scrumptious Cream Tea at the Tram Stop Café, Colyton Station.

Wednesday 10th June	£50
Wednesday 19th August	£50



* Payment plans available for Special Events. We accept regular weekly or monthly payments.

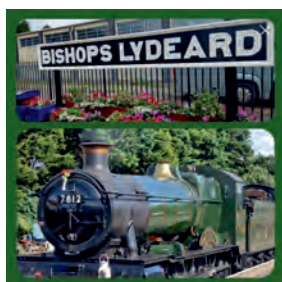
Check out our website for up to date day trips

Day trips need to be paid in full at the time of booking and are non refundable and non transferable due to limited availability.



Day Trips 2026 (Limited Departure Points) Special Events

Minehead Rail & Dine



The Quantock Belle Dining Train operates on the scenic West Somerset Railway between Bishops Lydeard (near Taunton) and Minehead, recreating that wonderful, nostalgic atmosphere of the great days of steam. The Train winds its way through the beautiful Quantock Hills past the ancient port of Watchet and along the coast to Blue Anchor Bay and through to its conclusion at Minehead.

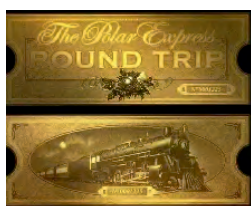
Thursday 9th April	£85	Fish & Chips plus Alcohol - Cream Tea on return
Thursday 21st May	£85	Fish & Chips plus Alcohol - Cream Tea on return
Wednesday 3rd June	£85	Fish & Chips plus Alcohol - Cream Tea on return
Saturday 13th June	£85	Fish & Chips plus Alcohol - Cream Tea on return
Saturday 25th July	£85	Fish & Chips plus Alcohol - Cream Tea on return
Thursday 27th August	£85	Fish & Chips plus Alcohol - Cream Tea on return
Wednesday 30th September	£85	Fish & Chips plus Alcohol - Cream Tea on return

Polar Express TM at South Devon Railway

Selling out year after year, we travel to the multi-award winning South Devon Railway, one of Devon's and the West Country's best loved tourist attractions and is the longest established steam railway in the south west, celebrating over 50 years in preservation. The Polar ExpressTM with its iconic sleek black steam engine is even inscribed with the '1225' signage to identify its as Santa's own train. Billowing steam all around the station as the Polar Express train pulls in (maybe some snow will magically appear too) Get your pyjamas ready to take part in the train ride of your life ! A fully immersive theatrical experience that will delight, amaze and create memories to cherish for years to come. Hold on tight to your golden ticket and book early. This trip requires two deposit payments and a final balance (allowing the cost to spread over a few months)



Saturday 19th December	£ 85	SDR	Polar Express
Sunday 20th December	£ 85	SDR	Polar Express



* Payment plans available for Special Events. We accept regular weekly or monthly payments.

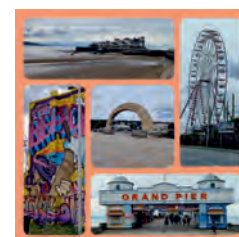
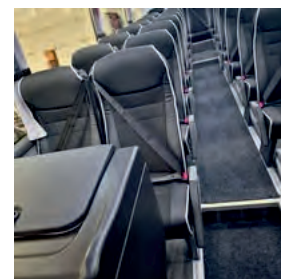
Check out our website for up to date day trips

Day trips need to be paid in full at the time of booking and are non refundable and non transferable due to limited availability.



Day Trips 2026 (Limited Departure Points)

January	Sun 25th	Sunday Lunch Club	£60
February	Sat 14th	Oxford	£26
	Sat 21st	Mystery Tour	£26
	Sun 22nd	Sunday Lunch Club	£55
March	Sat 14th	Cirencester via Tetbury	£26
	Sat 14th	Camden Market	£30
	Sat 28th	Stroud on Market Day & Ross on Wye	£26
	Sat 28th	Weymouth	£26
April	Tues 7th	City of Wells & Cadburys Garden Centre	£26
	Thurs 9th	Devizes Market & Lacock Village	£26
	Thurs 9th	Minehead - Rail & Dine	£85
	Sat 25th	Hay on Wye	£25
May	Sat 2nd	Shrewsbury	£26
	Sat 2nd	Swanage	£26
	Mon 4th	Weston Super Mare	£26
	Wed 13th	Cirencester via Tetbury	£26
	Wed 13th	Leominster & Ludlow	£26
	Tues 19th	Abergavenny & Brecon	£26
	Thurs 21st	Minehead - Rail & Dine	£85
	Mon 25th	Weston Super Mare	£26
	Thurs 28th	Highclere Castle	£60
	Sat 30th	English Riviera Air Show	£26
June	Tues 2nd	Bath	£26
	Wed 3rd	Minehead - Rail & Dine	£85
	Wed 3rd	Tewkesbury & City of Worcester	£26
	Thurs 4th	Exmouth	£26
	Wed 10th	Scrumptious Cream Tea	£50
	Sat 6th	Tiverton Market & Taunton	£26
	Thurs 11th	Windsor	£26
	Sat 13th	Minehead - Rail & Dine	£85
	Sat 20th	Poole	£26
	Sat 20th	Tenby	£26
	Wed 24th	Royal Leamington Spa	£26
	Wed 24th	Stratford Upon Avon via Enchanting Evesham	£26
	July	Sat 4th	Mystery
Sat 4th		Weymouth	£26
Tues 7th		Sidmouth	£26
Sat 18th		Shrewsbury	£26
Tues 21st		City of Wells & Cheddar	£26
Wed 22nd		Royal Welsh	£26
Sat 25th		Minehead - Rail & Dine	£85



Check out our website for up to date day trips

*** Payment plans available for Special Events.**

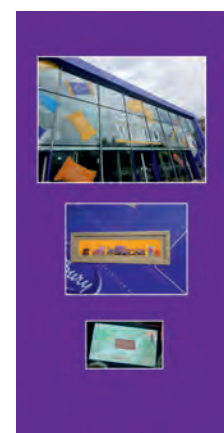
We accept regular weekly or monthly payments.

Day trips need to be paid in full at the time of booking and are non refundable and non transferable due to limited availability.



Day Trips 2026 (Limited Departure Points)

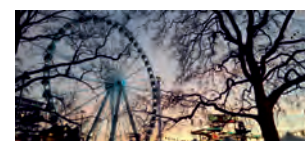
August	Sat 1st	Cadburys World (incl entrance)	£39 adult	£34 child
	Sat 1st	Teignmouth & Dawlish	£26	
	Wed 5th	Tenby	£26	
	Thurs 6th	Seaside Mystery	£26	
	Sat 15th	Torquay or Paignton	£26	
	Tues 18th	Narbeth & Cardigan	£26	
	Wed 19th	Scrumptious Cream Tea	£50	
	Sat 22nd	Bournemouth	£26	
	Sat 22nd	Tiverton & Barnstaple	£26	
	Wed 26th	Weston Super Mare	£26	
	Thurs 27th	Minehead Rail & Dine	£85	
	Sat 29th	Lyme Regis the Pearl of Dorset	£26	
	Bank Holiday Mon 31st	Weymouth	£26	
	Bank Holiday Mon 31st	Weston Super Mare	£26	
September	Tues 1st	City of Plymouth	£26	
	Tues 1st	Salisbury	£26	
	Sat 5th	Sidmouth & the Donkey Sanctuary	£26	
	Thurs 17th	Devizes on Market Day & Chippenham	£26	
	Thurs 17th	Hereford & Labels	£25	
	Sat 26th	Porthcawl - Elvis Festival	£22	
	Tues 29th	Abergavenny & Brecon	£26	
	Wed 30th	Minehead - Rail & Dine	£85	
October	Sat 3rd	Portobello Market	£30	
	Thurs 8th	Oxford	£26	
	Wed 14th	Bath	£26	
	Wed 14th	Stratford Upon Avon	£26	
	Sat 31st	Bath	£26	
	Sat 31st	Gloucester Quays Shopper	£26	
November	Sun 22nd	Winchester Christmas Market	£26	
	Sat 28th	Cirencester Christmas Market	£26	
	Sun 29th	Bath Christmas Market	£26	
	Sun 29th	Birmingham Christmas	£26	
December	Wed 2nd	Bath Christmas Market	£27	
	Wed 2nd	Bristol Christmas Market	£27	
	Thurs 3rd	Exeter Christmas Market	£27	
	Thurs 3rd	Taunton Xmas Shopping	£27	
	Sat 5th	Stratford Christmas Market	£27	
	Sat 5th	Worcester Fayre	£27	
	Wed 9th	Oxford	£27	
	Sat 12th	London	£30	
	Sat 12th	Winchester Xmas Market	£27	
	Sun 13th	Gloucester or Gloucester Quays Xmas Market	£27	
	Sun 13th	Birmingham Christmas Market	£27	
	Tues 15th	Cheltenham Xmas Market	£27	
	Wed 16th	Bath Xmas Market	£27	
	Wed 16th	Bristol Xmas Market	£27	
	Sat 19th	Polar Express	£ TBC	
	Sun 20th	Polar Express	£ TBC	



Check out our website for up to date day trips

*** Payment plans available for Special Events.
We accept regular weekly or monthly payments.**

Christmas Market Dates are to be confirmed



Day trips need to be paid in full at the time of booking and are non refundable and non transferable due to limited availability.

Eastbourne

Picturesquely set at the foot of the Sussex downs, the elegant traditional seaside resort of Eastbourne has five miles of unspoilt beaches. It's three tiered seafront promenade is bordered by exquisite floral garden displays and stylish hotels. Eastbourne is one of the few resorts which retains a splendid bandstand where concerts are regularly held during the season. The town offers excellent shopping with high street names at the Arndale Centre and Terminus Road where quirky and unique independent shops are found along the colourful Seaside Road.

Haddon Hall Hotel

Enviably situated at the seafront end of the Devonshire Place, a broad street lined avenue which links the main promenade with the town centre you are centrally situated to make the most of your stay in Eastbourne. The popular hotel offers a relaxed atmosphere with efficient



service. Haddon's Hall reputation for excellent food has been well known over the years with the head chef producing traditional English cuisine with modern variations for over twenty years. The en-suite accommodation includes colour television and tea/coffee making facilities. There is a lift to all floors.



Price Includes:

All coach travel/En-suite accommodation/Dinner, Bed&Breakfast /Evening entertainment/Excursions/ Bar Promotions on tours only which are noted (terms&conditions apply)

Departure Dates

February 17th	5 days	£265	Bar Promo
February 27th	4 days	£205	Bar Promo
March 2nd	5 days	£270	Bar Promo
March 6th	4 days	£205	Bar Promo
March 9th	5 days	£270	Bar Promo
April 2nd	5 days	£370	Easter
April 26th	5 days	£350	
May 25th	6 days	£450	
July 11th	8 days	£650	
August 8th	8 days	£650	
August 31st	6 days	£500	
September 20th	6 days	£450	
October 19th	5 days	£410	Turkey & Tinsel
November 2nd	5 days	£410	Turkey & Tinsel
November 13th	4 days	£300	Turkey & Tinsel
December 29th	5 days	£620	New Year



Excursions will be from the following depending on weather and seasonal events.

Bexhill on Sea Worthing Brighton Hastings

Holiday Insurance

Reminder: your accommodation booking is a legally binding contract. In the event of cancellation we are entitled to retain your deposit and ask for a further payment to compensate us for our loss. For your protection we suggest you take advantage of holiday cancellation insurance. We regret cancellations for whatever reason may be chargeable. We therefore recommend for peace of mind you take out cancellation insurance through an intermediary who is authorised and regulated by the Financial Services Authority.

SCALE OF CANCELLATION CHARGES

Period before departure within which written cancellation of holiday is received	Amount of cancellation charge as a % of Deposit
More than 42 days	
42 - 29 days	50%
28 - 15 days	85%
14 - 1 days	100%
Departure date or later including voluntary termination whilst on holiday	100%

Eastbourne (continued)



Queens Hotel (Leisureplex Hotels)

Located in Eastbourne's most central and lively location directly overlooking the pier. Superb Princess Suite with large dance floor, bar and entertainment most evenings. It has an attractive sun lounge with outstanding views of the sea and the pier. The restaurant seats over 180 guests. All 125 en-suite bedrooms have tea/coffee making facilities, internal telephone, hairdryer and Freeview television with radio channels. There are no ground floor rooms but two lifts serve all bedrooms.

Price Includes:

All coach travel/En-suite accommodation/
Dinner, Bed & Breakfast /Evening entertainment/
Excursions/ Spring Break includes 1 free drink with dinner



Departure Dates:

January 26th 5 days £215
Spring Breakaway incl 1 drink with dinner

February 23rd 5 days £260
Spring Breakaway incl 1 drink with dinner

November 6th 4 days £290



Single Supplement £0 to £27 depending on date
Sea View Supplement £18-24 per person depending on date

Excursions will be from the following depending on weather and seasonal events.

Bexhill on Sea Worthing Brighton
Hastings



Please Remember



Can we please remind all our customers of our luggage policy. Please bring one small/medium sized suitcase per person, not one large suitcase per couple. We limit the size of the suitcases due to luggage space available on the coach and due to health and safety regulations they can be weighing no more than 20kg for our drivers and hotel staff to handle.

Small Suitcase
Approx Size 18'

Medium Suitcase
Approx Size 24'

Exmouth

Exmouth is the largest town in East Devon and one of England's oldest seaside resorts. Surrounded by views of countryside and a flat promenade to enjoy a relaxing stroll. The Magnolia Centre and Parade mix well with high street shops and the town has an indoor market to be explored amongst the splendid regency architecture. Take a stroll to the harbour and discover unforgettable experiences on the water with Stuart Line Cruises, a top choice for things to do in Devon and the premier tourist attraction in Exmouth! Since 1968, a family-run business has offering a wide variety of boat trips year-round, exploring the tranquil River Exe and the breathtaking South Devon & UNESCO Jurassic Coast.



Cavendish Hotel (Leisureplex)

Situated on the level seafront overlooking Exmouth's fine golden sands and only a few minutes walk from the shops. All 80 bedrooms are en-suite with tea/coffee making facilities, hair dryer and Freeview television with radio channels. There is a television lounge, quiet lounge with sea views and games room with snooker and darts. The bar lounge has a dance floor and hosts entertainment most evenings. The lift serves most rooms (excluding the 4th floor)



Price Includes:

All coach travel/En-suite accommodation/Dinner, Bed&Breakfast /Entertainment most evenings/Excursions

Departure Dates:

August 19th	5 days	£420	
November 30th	5 days	£310	Turkey & Tinsel
Single Supplement		£36 - £52	
Sea View Supplement		£28 - £48	per person
Turkey & Tinsel includes 1 festive themed lunch			

Excursions will be from the following depending on weather and seasonal events.

Exeter Sidmouth Torquay

Holiday Insurance

Reminder: your accommodation booking is a legally binding contract. In the event of cancellation we are entitled to retain your deposit and ask for a further payment to compensate us for our loss. For your protection we suggest you take advantage of holiday cancellation insurance. We regret cancellations for whatever reason may be chargeable. We therefore recommend for peace of mind you take out cancellation insurance through an intermediary who is authorised and regulated by the Financial Services Authority.

SCALE OF CANCELLATION CHARGES

Period before departure within which written cancellation of holiday is received	Amount of cancellation charge as a % of Deposit
More than 42 days	
42 - 29 days	50%
28 - 15 days	85%
14 - 1 days	100%
Departure date or later including voluntary termination whilst on holiday	
	100%

Falmouth

Falmouth, the main resort of the South Cornish Riviera boasts one of the highest average sunshine records in Britain. It's natural harbour is the third largest deep-water harbour in the world with a range of boats from yachts to ocean liners. Located at the southern end of the Fal Estuary, it has beautiful laid out gardens and a Tudor Castle overlooking the bay. The main high street has quaint old shops standing beside famous stores, as you walk along you will catch a glimpse of the colourful harbour through the picturesque alleyways.

Memby Hall Hotel

This popular 2* hotel is situated on the esplanade with spectacular views across the bay. The majority of the en-suite bedrooms have sea views and all rooms are equipped with colour television and hospitality tray. Indoor leisure facilities include a sauna and spa pool. Relax and enjoy the views from the sun lounge. A lift serves all floors.

Price Includes:

All coach travel/En-suite accommodation/Dinner, Bed&Breakfast /Evening entertainment/Excursions

Departure Dates:

March 18th	5 days	£360
April 27th	5 days	£390
June 28th	7 days	£645
September 28th	5 days	£420



Excursions will be from the following depending on weather and seasonal events

Penzance Porthleven Truro St Ives - (7 day tour only)

Great Yarmouth

Includes a Cruise on the Norfolk Broads

Since the 1760's Great Yarmouth has been a flourishing resort and is still one of the UK's most popular seaside resorts. With over 15 miles of sandy beach, a large shopping centre and two lively piers, there is plenty to do. With wide spacious pavements, lively attractions and bright, modern illuminations, including colourful beach lighting across Central Beach. The seafront has a variety of restaurants and classic seaside cafes, many with outdoor seating areas. The town's shops and department stores surround the Market Place. There's also narrow streets, some of them just 37 inches wide in places, which run from the river to the town centre.

Palm Court Hotel

Opposite the sandy beach the hotel offers comfort and style combined to ensure guests enjoy their stay. There is a lift to all floors and all 70 en-suite bedrooms have colour televisions, direct dial telephone and tea/coffee making facilities. There is free WiFi at the hotel. Choose from the menu where there is traditional British cooking with an interesting twist. Spend time in the indoor heated swimming pool or sit back and relax with your favourite tittle watching the waves from the sun deck.

Price Includes:

All coach travel/En-suite accommodation/Dinner, Bed&Breakfast /Regular Evening entertainment /Excursions/ Cruise on the Norfolk Broads

Departure Dates:

June 1st	5 days	£465
October 19th	5 days	£435
Sea View Supplement	£12 per person per night	

Excursions:

Norwich Wroxham & Broads Cruise



Hauntingly Delicious

Ghostly happenings, with a chill in the air as you encounter stately spirits from scandalous stories. Stately majesty combines with the 'fear factor' on this absorbing tour of some of the most haunted sites of the South. Discover and delight at the reportedly haunted State Apartments on a tour at Henry VIII's Hampton Court Palace, famed for phantoms of screaming queens, the Grey Lady and the Man in the mask. 1000 years of spine-chilling stories abound at 'most haunted' William the Conquerors' Oxford Castle and Prison, as you uncover a fearsome past of brutality, mystery, intrigue and the paranormal.

Voco Reading Hotel

The four-star deluxe hotel has 201 Guest Rooms all rooms have en-suite facilities, hospitality tray, mini-bar, colour TV with movie and satellite channels, direct dial telephone, radio, trouser press, ironing board and hairdryer. Unwind in Le Club Health Fitness, brand new Leisure Club, incorporating a swimming pool, fully fitted gym, sanarium and whirlpool. Beauty treatments are available for those who enjoy a little extra indulgence.



Price Includes:

All coach travel/En-suite accommodation/Dinner, Bed&Breakfast /Excursions

Departure Date:

October 23rd 3 days £320
Single Supplement £80



Hampton Court Palace - Spooky Stories Guided Tour

Delight in Henry VIII's opulent private apartments as you stroll past portraits of Tudor monarchs lining the Processional Route, to the infamous 'Haunted Gallery' on a guided tour. Hear tales of the ghosts of two wives seen running and screaming as they haunt the corridors of this grand royal residence, the man in the mask and the former servant, Sybil Penn, 'the grey lady'.

Duration: approx. 90 mins

Images courtesy of VisitBritain Historic Royal Palaces.



Oxford Castle & Prison - Costume Guided Tour

Explore 1,000 years of mystery and intrigue at Norman medieval Oxford Castle as you brave the eerie white mists and disembodied footsteps to discover the ghosts of Oxford on a costumed guided tour.



Hear spine-chilling stories of former residents, the curse of Rowland Jenkes, and the unfortunate fate of Mary Blandy at the gallows. Climb the Saxon St George's Tower, for a 360° panoramic view or delve underground into the 900-year-old crypt to uncover why this is regarded as one of the most haunted buildings in the UK, as well as having a fearsome reputation for brutality.

Duration: approx. 90 mins

Images courtesy of David Fisher at Fisher Studios / Oxford Castle & Prison



Ilfracombe & North Devon

Ilfracombe is the premier holiday resort in North Devon. It enjoys a setting of rare beauty amongst the breath taking scenery of Exmoor and the North Devon coastline and boasts a range of activities, attractions and events to suit all age groups. The town nestles in the hills and cliffs of Capstone and Hillsborough which overlook the harbour and is a treat for shoppers and fans of Victorian architecture and history. Around the harbour and along the seafront there is a range of souvenir and traditional seaside shops.

Imperial Hotel (Leisureplex Hotels)

Superbly situated in one of the best positions in Ilfracombe on the level overlooking the Landmark Theatre and sea, near to the shops and a short walk from the harbour. There are four steps to the front of the hotel and although a ramp is available on request the gradient is steep and we advise the ramp should not be used with anybody in a wheelchair. All 104 bedrooms have tea/coffee making facilities, internal telephones, en-suite facilities, hair dryer and TV with radio channels. There is level access from reception to a large quiet TV lounge, cosy bar and entertainment area with dance floor. On the first floor the attractive restaurant can seat 200 people. Central heating throughout the hotel. The lift serves all floors, although the rear wing has a few additional stairs. There is free WiFi in public areas.

Price Includes:

All coach travel/En-suite accommodation/ Dinner, Bed & Breakfast/ Evening entertainment/ Excursions

Departure Dates:

April 4th	5 days	£290	incl Half Price Bar Deal Easter
July 8th	5 days	£360	
October 10th	5 days	£300	
Sea View Supplement	£28 - £48 per person depending on dates		



Excursions will be from the following depending on weather and seasonal events

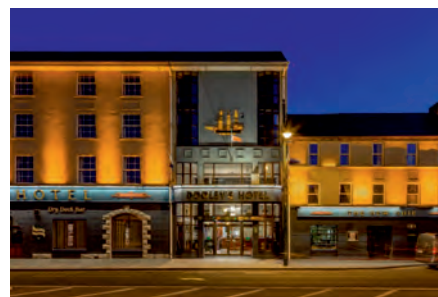
Barnstaple Atlantic Village Bideford

Ireland

From its vibrant city life, to the rural charm of inland towns and villages, to its stunning coastline Waterford has something for everyone. Waterford City, the oldest city in Ireland has a perfect blend of ancient and modern. Its collection of pubs, gourmet restaurants and excellent shops and boutiques, co-exist with medieval city walls, quaintly cobbled back streets and the grandeur of historical buildings still standing proud after more than a thousand years.

Dooley's Hotel, Waterford

The three-star family run hotel offers guests modern and contemporary conveniences and comforts with a warm welcome and traditional Irish hospitality. 112 en-suite guest rooms that are spacious and beautifully appointed with toiletries, hairdryer, tv, WiFi, telephone, tea and coffee making facilities.



Price Includes:

All coach travel/Return ferry crossings/En-suite accommodation/ Dinner, Bed & Breakfast/ Excursions



Departure Date:

August 3rd	5 days	£610
Single Supplement		£144

Excursions

Cork Kilkenny

Isle of Wight - Sandown

With regular ferry crossings taking just 45 minutes, the Isle of Wight is the perfect choice. Sandown first developed as a fashionable resort in Victorian times when it was visited by, amongst others, Lewis Carroll, Charles Darwin, George Eliot and Alfred Tennyson. Today it remains popular, offering a wealth of entertainment and easy access to the remarkable beauty of the rest of the island. The resort boasts long sandy beaches safe for bathing, excellent for water sports and boating and the pier, which is directly opposite our hotels, is popular with visitors. Known for its mild climate, coastal scenery and landscapes of fields. It is the largest and most populated island in England. Separated by the Solent, it is about 2 miles off the coast of Hampshire in the English Channel. The island currently has the highest number of award winning beaches in England, all managed to the highest standards and inspected daily. For retail therapy the artistic heritage of the Island means there are plenty of arts and craft outlets, selling everything from handcrafted jewellery to sculptured glass and wood carvings.

Royal Pier Hotel - Sandown

The 2* hotel offers good value for money. The Royal Pier Hotel occupies an excellent position on the seafront at Sandown and offers comfortable en-suite accommodation with colour television and tea/coffee making facilities. The large restaurant offers home cooked meals and entertainment is held in the bar every evening. The hotel has an indoor heated swimming pool and there is a lift to all main floors.



Departure Dates:

March 16th	5 days	£300
May 4th	5 days	£330
July 27th	5 days	£360
August 17th	5 days	£360
September 7th	5 days	£360

Bayshore Hotel, Sandown (Leisureplex)

The Bayshore is a popular choice for visitors to the Isle of Wight as it is situated in a magnificent position on the seafront, opposite the superbly sandy beaches and the traditional pier and close to the high street. With 76 ensuite bedrooms, many with magnificent views, all have tea and coffee making facilities, hair dryer and Freeview TV with radio channels. There are ironing facilities available from reception. The restaurant is on the ground floor.



Departure Dates:

February 23rd	5 days	£250	Half Price Bar Deal
May 2nd	5 days	£390	
September 19th	5 days	£370	
Single Supplement		£52	
Sea View Supplement		£28 - £48	pp

Price Includes:

All coach travel/En-suite accommodation/ Dinner, Bed&Breakfast / Evening entertainment /Excursions

Excursions for Isle of Wight will be from the following depending on weather and seasonal events.

Newport Ryde Island Tour Shanklin & Godshell



Isle of Wight - Shanklin

No need for a passport when you take one of the regular ferries to cross the Solent to the Isle of Wight. Shanklin is beautifully situated on the cliffs bordering the South East coast of the Isle of Wight and is sheltered to the west by high-lying downs. The town is split with the old village lying on the cliff top and the new village nestled close to the sea. The two are connected by a cliff lift. Shanklin's beach, surrounded by cliffs and a natural suntrap, is safe for bathing and boasts cleanliness awards for both its sand and waters. Shanklin is a town of great character and charm, with many interesting small shops and a variety of Victorian architecture. Shanklin Old Village is a perennial attraction where most of the picturesque cottages are clustered around the thatched Crab Inn.

Daish's Hotel - Shanklin

A flagship to the extensive refurbishment programme was completed in 2015 the original building was an 18th century Coaching Inn, situated on Shanklin Street. There are still a number of period features that can be seen today. The hotel has 72 en-suite bedrooms with flatscreen television, tea/coffee making facilities. Free WiFi in public areas and live entertainment every evening. The hotel has a lift.

Departure Dates:

February 2nd	5 days	£185	incl 2 nights half price bar
March 30th	5 days	£290	incl 1 night half price bar
June 22nd	5 days	£390	
September 14th	5 days	£400	

Superior & Garden View supplement upon request

Price Includes:

All coach travel/En-suite accommodation/ Dinner, Bed&Breakfast / Evening entertainment / Excursions



Shanklin Hotel - Shanklin (Leisureplex)

One of the best known hotels on the island, the Shanklin is situated in Shanklin town with superb views from its magnificent Starlite Restaurant and many bedrooms. There is also the Shanklin Old Village and the beach, which are just a minute's walk away. Guest accessibility at the hotel ranges from a lift that serves to most rooms and public areas and a beach lift that takes you down to the beach. The hotel has 102 en-suite bedrooms many with spectacular views. All rooms have tea and coffee making facilities, hairdryer and large flat screen Freeview TV with radio channels. There are ironing facilities available from reception. The hotel has an indoor swimming pool.

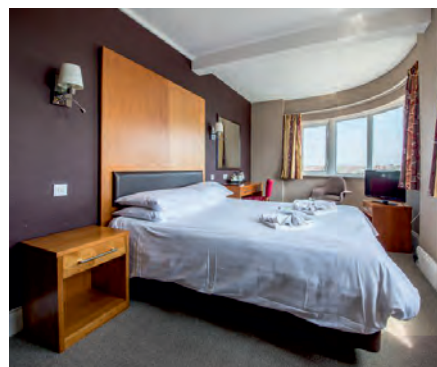


Departure Dates:

June 10th	5 days	£420
July 18th	5 days	£430
Single Supplement		£20 - £52
Sea View Supplement		£48 pp

Excursions for Isle of Wight will be from the following depending on weather and seasonal events.

Newport Ryde Island Tour Shanklin & Godshell



Jersey



Jersey is the largest and most southerly of the Channel Islands, located about 90 miles from the British Coast and only 14 miles from the Normandy coast. From the rugged cliffs of the north down to the long, sandy beaches of the south and the idyllic valleys that link the two. Jersey has remained unspoilt whilst also offering visitors a huge amount to explore. It is the island's abundance of natural beauty and mild, sunny climate which makes it so appealing today. Jersey has a great deal to offer the holidaymaker with its contrasting coastline of rugged cliffs, hidden coves, fishing harbours, clear blue seas, many well

preserved historic sites, ancient forts and Norman castles. St Helier is the capital of this holiday island, with a maze of narrow streets bustling with life.

Please note you will be travel as foot passengers and therefore you are required to carry your own luggage from the designated airport coach drop off point to the airport terminals. Any airport assistance must be requested at the time of booking.

A coach/minibus will meet you at Jersey airport and transfer you to the hotel where you will meet the hotel representative.

Norfolk Lodge Hotel

One of the successful hotels situated in St Helier only half a mile from the beach and town centre. A comfortably furnished hotel providing an entertainment programme makes this hotel a popular lively choice. En suite bedrooms provide hospitality tray, flat screen TV and telephone. The hotel has an indoor swimming pool complex, large lounge and bar or simply relax on the sun terrace. The hotel has a lift to most floors but due to the different levels of the building there are a number of stairs around the property that may be difficult if you have restrictions in mobility.



Price Includes:

All coach travel /
Direct return flights from Bristol Airport /
En-suite accommodation /
Dinner, Bed & Breakfast / At leisure in St Helier/
Entertainment programme from May to September
We require a £150 deposit per person for all holidays to Jersey by air /
Balances for Jersey are required 8 weeks before departure /
Travel insurance details are requested when balance is paid /
Flight details are subject to change, including dates, times and airports.

**Brent Thomas Coaches Ltd act as retail agents for
Destination Specialists ATOL protected 9503**

Departure Date

July 12th	7 days	£890
Single Supplement	£120	

Up to date guidelines on travelling to Jersey can be found online.

<https://www.gov.je/Health/Coronavirus/Travel/Pages/CoronavirusTravelAdvice.aspx>



Liverpool

Liverpool is a city where you can be yourself. It's a city for creative types, music lovers, culture addicts and friendly faces. The popularity of the Beatles contributed to the city's status as a tourist destination. As a major British port, the docks in Liverpool have historically been central to the city's development.

Atlantic Hotel

The hotel is a 225 bedroom, twelve storey hotel that contributes to the city's stunning skyline. Set on the edge of the city's commercial district, opposite the Royal Liver building, the hotel is within walking distance to some of Liverpool's best attractions. En-suite rooms are furnished with a modern and contemporary feel, TV, climate control, WiFi access, hairdryer, telephone and tea/coffee making facilities. This is bed & breakfast only with many choices of restaurants or cafes within walking distance of the hotel.

Departure Dates:

August 24th	5 days	£330
October 26th	5 days	£330
Single Supplement	£126	



Price Includes:

All coach travel/

En-suite accommodation/Bed & Breakfast only /Only 1 excursion on this city break allowing the maximum of opportunity to explore.

Please note Liverpool hotel dates are subject to change due to football fixtures, sporting events and special occasions. In any case of cancellations you will be informed as soon as possible and offered either another date or a full refund.

Excursions

Southport

London Weekend Afternoon Tea at Andaz London Liverpool Street Hotel, London

Experience a distinctively local stay at Andaz London Liverpool Street, where London's dynamic energy meets bold design and local culture. Discover modern and spacious rooms and suites, wind down at one of the unique restaurants and bars or explore the best of the city. Capturing the hotel's location, rooms are full of history and heritage where the traditionally conservative city meets the ever-evolving, vibrant artistic vibe of East London. The spacious and modern rooms have a flat-screen TV, luxurious Yukata bathrobes with T-London toiletries. The iconic Tower of London and Tower Bridge are just steps away, for a burst of floral charm, Columbia Road Flower Market awaits, while the legendary Brick Lane and vibrant Spitalfields offer the ultimate cool and quirky experiences.

Afternoon Tea on Arrival Day 3.30pm

The Afternoon Tea at 1901 Wine Lounge features a delectable selection of sweet and savoury treats that honour the history and flavours of East End London. Enjoy an assortment of delicacies meticulously prepared to provide a delightful and memorable dining experience. Please note, room may change depending on numbers. Adding to the charm of the Afternoon Tea experience is the premium selection of JING teas, bubbles, or champagne available at 1901 Wine Lounge. Housed inside the historic Andaz London Liverpool Street, the lounge offers a unique blend of tradition and modern luxury.

Canapés served between 6pm - 7pm

Elevate your evening with complimentary wine hour Vino and Vibes, served daily at the Andaz Lobby.

Dive in to the Andaz London ambience with rich reds and crisp whites accompanied by delectable canapés and sophisticated tunes.



Departure Date:

April 25th	2 days	£245
Single Supplement		£109

Price Includes:

All coach travel/ En-suite accommodation/Bed & Breakfast /Afternoon Tea & Canapés

Llandudno



One of the most popular tourist destinations in the UK, regularly placing in the top five of the TripAdvisor's 'Traveller Choice Awards', and it's easy to see why. The town is beautifully set in a natural bay and features its very own Blue Flag beach. You'll also find Llandudno Pier, the longest pier in Wales and a wide variety of shops and cafes. Overlooking Llandudno you'll find the Great Orme which is accessible by either cable car or tram and offers a panoramic view of the coastline and ocean beyond. Further afield there's Snowdonia National Park, Colwyn Bay and a whole host of picturesque country and seaside villages.

Merrion Hotel

The 3* Merrion Hotel is a luxurious en-suite hotel accommodation with a lift to all floors and stunning views from the sea-front rooms, with toiletries, flatscreen TV, direct dial telephone and hot drinks making facilities. Now owned by the Four Saints Hotels apart offering unwavering commitment to personalized service and attention to detail. Dedicated staff take pride in creating a warm, welcoming atmosphere that makes every guest feel special, particularly excelling in catering to older couples seeking a peaceful coastal retreat. The Merrion is a firm favourite with many of our customers who book return holidays year after year.

Departure Dates:

March 2nd	5 days	£445	
April 20th	5 days	£500	
July 13th	5 days	£560	
September 7th	5 days	£550	
November 9th	5 days	£500	Turkey & Tinsel
December 23rd	5 days	£685	Christmas

Single Supplement £84	April/July/Sep
Single Supplement £119	Christmas



Price Includes:

All coach travel/En-suite accommodation/Dinner, Bed & Breakfast
/Regular evening entertainment/ Excursions

Excursions will be from the following depending on weather and seasonal events.

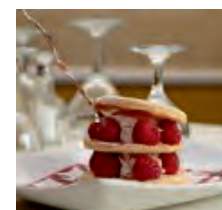
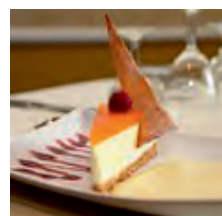
Chester	Llanfair P.G.	Betws y Coed	St Asaph
---------	---------------	--------------	----------

Holiday Insurance

Reminder: your accommodation booking is a legally binding contract. In the event of cancellation we are entitled to retain your deposit and ask for a further payment to compensate us for our loss. For your protection we suggest you take advantage of holiday cancellation insurance. We regret cancellations for whatever reason may be chargeable. We therefore recommend for peace of mind you take out cancellation insurance through an intermediary who is authorised and regulated by the Financial Services Authority.

SCALE OF CANCELLATION CHARGES

Period before departure within which written cancellation of holiday is received	Amount of cancellation charge as a % of Deposit
More than 42 days	50%
42 - 29 days	85%
28 - 15 days	100%
14 - 1 days	100%
Departure date or later including voluntary termination whilst on holiday	100%



Llandudno (continued)

Hydro Hotel (Leisureplex Hotels)

Ideally situated on the sea front overlooking Llandudno Bay, close to the Aberconwy Centre and shops. A large entertainment suite on the lower ground floor complete with bar, dance floor and entertainment five evenings per week. The superb 'Looking Glass' bar is situated on the ground floor and has views over the bay. A games room with a full sized snooker table is on the ground floor. There are several steps to the front of the hotel but there is a wheelchair lift from the street level into reception. The large ground floor restaurant seats up to 225 guests. The en-suite bedrooms are over five floors including a small number of ground floor rooms. There is a lift at the hotel but most floors are split level and there are some steps to the majority of bedrooms. All bedrooms have central heating, tea/coffee making facilities, hairdryer and Freeview televisions with radio channels. Most rooms have a shower.



Departure Dates:

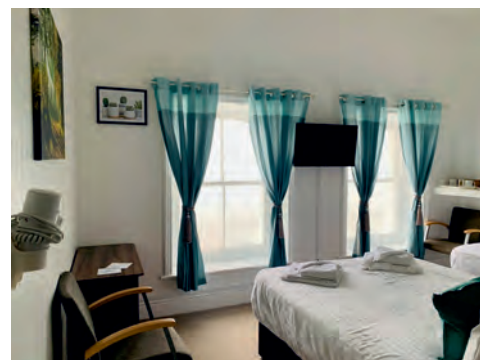
January 26th	5 days	£250	Spring Breakaway
March 9th	5 days	£300	Spring Breakaway
May 27th	5 days	£380	Spring Breakaway
July 22nd	5 days	£420	
November 16th	5 days	£340	incl 1 festive themed lunch
Sea View Supplement		£28 - £48	
Single Supplement		£36 - £52	

Price Includes:

All coach travel/En-suite accommodation/Dinner, Bed & Breakfast /Regular evening entertainment/ Spring Breakaway includes 1 free drink with dinner/ Excursions

Four Oaks Hotel

Introducing the very popular Four Oaks Hotel which is situated in the heart of Llandudno on its picturesque panoramic promenade. The hotel is classically designed, set in a Victorian building but come comes equipped with all of the latest modern features and facilities you need to enjoy a relaxing visit. A stay with the Four Oaks allows you to enjoy a home away from home feeling in the beautiful resort of Llandudno. The comfortable and spacious restaurant offers amazing sea views and a great atmosphere, a serene environment to relax whilst having food. En-suite bedrooms come equipped with tea & coffee making facilities, hairdryers, TV, WiFi and toiletries.



Departure Dates:

April 17th	4 days	£260	
July 6th	5 days	£390	
July 24th	4 days	£310	
September 11th	4 days	£310	
October 5th	5 days	£330	
November 30th	5 days	£380	Turkey & Tinsel
Sea View Supplement	£6 per person per night		

Price Includes:

All coach travel/En-suite accommodation/Dinner, Bed & Breakfast /Regular evening entertainment/ Excursions

Excursions will be from the following depending on weather and seasonal events.

Chester

Llanfair P.G.

Betws y Coed

St Asaph

Newquay



Newquay is Cornwall's premier holiday resort boasting some of the finest coastlines in Europe with no less than eleven beaches ! The town is an ancient one, the 'new quay' from which it takes its name dates back to the fifteenth century, when it was known as 'Towan Blystraa'. As well as being Britain's surfing capital it offers wonderful cliff and beach walks, a picturesque harbour and a variety of activities including shark fishing which we would all love to see photos from. There is a good variety of both high street and local shops, with interesting alleyways housing little craft and antique shops and a selection of inviting tea shops and cafes for a refreshing break.

Eliot Hotel (Leisureplex Hotels)

The Eliot Hotel is only a few yards from the seafront and within walking distance of the shops and harbour. Situated close to the Great Western and Tolcarne beaches. The lounges provide a great place to relax after a busy day exploring. All 77 en suite bedrooms have tea, coffee making facilities, hair dryer and Freeview television with radio channels. The lift serves most rooms although all floors are split level with some intermediate steps.

Price Includes:

All coach travel/ En-suite accommodation/ Dinner, Bed & Breakfast/ Excursions/ Entertainment most evenings

Departure Dates:

February 13th	4 days	£195	1 free drink with dinner
November 2nd	5 days	£300	1 free drink with dinner
Single Supplement		£36 - £	depending on date
Cosy Double Supplement		£45 - £60	per person



Barrowfield Hotel (Daish's Hotel)

The hotel is ideally located, just 200 yards from Tolcarne beach, considered one of the best in the area and only a short 10 minute stroll from Newquay town centre. The hotel has a coffee shop serving sandwiches and cakes throughout the day. It is also fortunate to have a heated indoor swimming pool. The entertainment room features live entertainment every night and the spacious lounges offer plenty of space to relax in. With comfortable en-suite accommodation, flatscreen tv, tea and coffee making facilities. The hotel entrance has 3 steps, the restaurant, coffee shop, bar and ballroom are all on the ground floor and accessible from the main entrance. The hotel is spread over four floors with lift access to all of the floors.



Price Includes:

All coach travel/En-suite accommodation/ Dinner, Bed & Breakfast/ Excursions/Evening entertainment/

Departure Dates:

February 16th	5 days	£190	2 nights Half price Bar
April 13th	5 days	£305	
July 6th	5 days	£370	

Excursions will be from the following depending on weather and seasonal events.

Padstow Truro

Newquay (continued)

Kilbirnie Hotel

Overlooking the Atlantic Ocean, originally built in the late 1930's as one of the first hotels on Narrowcliff in Newquay. Originally a small family run business, it has seen several transformations over the years and has changed owners and styles in keeping with the times. Today it offers a bright contemporary style while making the most of the stunning views right on the doorstep. It includes a heated indoor swimming pool, an outdoor splash pool, sauna, fully equipped fitness suite and a secluded sun terrace. All en suite bedrooms have Freeview TV aswell as tea and coffee making facilities. There is a lift at the hotel

Price Includes:

All coach travel/En-suite accommodation/Dinner, Bed&Breakfast/Excursions/Evening entertainment 3 nights

Departure Dates:

February 17th	5 days	£270
November 7th	4 days	£270 Turkey & Tinsel
Sea View Supplement		£45 - £60 per person



Excursions will be from the following depending on weather and seasonal events.

Padstow Truro

Porthcawl

On the doorstep destination for our traveller who like's short journeys!

Porthcawl a seaside town developed as a coal port in the 19th century. Trade declined and in line with many coastal resorts in the Victorian era the town developed into a tourist hot spot. A new promenade was built in 1887 to commemorate Queen Victoria's Golden Jubilee, and then a Grand Pavilion followed in 1932, positioned on the promenade and is still used today. Porthcawl offers beautiful beaches and shoreline with lots of natural beauty to take in, an ideal spot to just sit and ponder for a while. A seaside resort which keeps on giving , you can find something for everyone, Town , Beaches , Amusements, Live Shows, just to name a few... and its right on our doorstep



Seabank Hotel (Leisureplex)

The hotel has spectacular views of the Bristol Channel and South Wales coast from the bar, restaurant and most bedrooms.

All 91 en-suite bedrooms are centrally heated, with hair dryer, TV, internal telephones and tea/coffee making facilities. Extensive public areas include the Smuggler's Bar, Garden Restaurant and large function room with entertainment most evenings. There is Wi-Fi in public areas. All meals are served in the attractive restaurant. There is a lift at the hotel.

Price Includes:

All coach travel/En-suite accommodation/Dinner, Bed&Breakfast/Excursions/Evening entertainment

Departure Dates:

April 15th	5 days	£290 incl 1 free drink with dinner
June 24th	5 days	£360
September 12th	5 days	£360
Single Supplement		£52
Sea View Supplement		£28 to £48 per person

Excursions will be from the following depending on weather and seasonal events.

Carmarthen on Market Day

Swansea

Pontins Sand Bay

Sand Bay lies 2 miles north of the seaside resort of Weston Super Mare, set in a beautiful open landscape. The grounds of the park have plenty of green grass to stroll on and relaxing seating areas. Sand Bay Holiday Village offers basic en-suite ground floor classic chalet apartments with television with limited channels, tea and coffee making facilities, central heating, bed linen plus a set of towels for the duration of your holiday. The park has a ballroom with a large dance floor. Daytime and evening entertainment programmes including live bands and cabaret shows and a residential entertainment team. The amazing Bluecoats are regarded by many as being some of the best entertainers in the industry and Sand Bay Holiday Village are very proud of the rich tradition that comes with the famous blue uniform. So prepare to be entertained and amazed as you witness their talents first hand, singers, dancers and a whole host of other talented Bluecoats just



waiting to make your stay a memorable one. Book for your favourite theme for 2025
 On site amenities include bowls, amusement arcade, pool, darts, Club Bar - Rose Garden Café, coffee shop and shop. Please be aware the pool is still currently closed. The restaurant is a self service buffet offering a full English breakfast and later a three course evening meal plus tea and coffee. With a range of good value beers, wines and soft drinks available for the perfect accompaniment to your meal.

Price Includes:

All coach travel/En-suite classic apartment accommodation with bed linen/Dinner, Bed & Breakfast /Evening entertainment /Excursions/

Departure Dates:

February 23rd	5 days	£200	70's
June 29th	5 days	£230	40's & 50's
August 31st	5 days	£230	Swingin 60's
November 16th	5 days	£215	Turkey & Tinsel



Upgrade from a classic apartment to Club apartments available £20 per room per night.

Please note that Sand Bay is an adult only park.

Excursions will be from the following depends on weather and seasonal events

Taunton

Burnham



Possibilities are endless when it's a MYSTERY HOLIDAY ????????

Whether it is a city break, seaside hotel or countryside manor, you know it has been chosen especially for you. No need to worry about which road to take or where to stop for a comfort break. Sit back, relax and enjoy the journey until we reach the final destination.....

Price Includes:

All coach travel/En-suite accommodation/ Evening Entertainment/ Dinner Bed & Breakfast / Includes a Sunday Lunch

Departure Date:

February 7th	2 days	£120	Includes Sunday Lunch
--------------	--------	------	-----------------------



Paignton

Marine Hotel

Situated on a level position, directly opposite the seafront and only a short walk to the town centre. With 53 en-suite bedrooms, a sunlit reception area and a plushly designed conservatory. Boasting a panoramic view of Paignton Seafront and the pretty Palace Gardens. There is a lift to all floors. Serving traditional home cooked food. All bedrooms have beverage making facilities, hairdryers, and colour televisions. Some ground floor rooms available.

Departure Dates:

February 9th	5 days	£270	
April 13th	5 days	£330	
May 8th	4 days	£290	
June 15th	5 days	£375	
July 20th	5 days	£420	
August 14th	4 days	£350	
September 4th	4 days	£330	
September 25th	4 days	£330	
October 9th	3 days	£210	Incl Sunday Lunch
October 16th	4 days	£300	
November 6th	4 days	£300	Turkey & Tinsel
November 23rd	5 days	£380	Turkey & Tinsel
December 11th	4 days	£265	Turkey & Tinsel
December 27th	4 days	£320	Twixmas
Specific room/sea view supplement			£10 per room per night



Price Includes:

All coach travel/En-suite accommodation/D,B&B/ Regular Evening entertainment/ Excursions

Palace Hotel

Built in 1870, Steartfield House, as it was known, was the private residence to Washington Singer, one of the sons of Isaac Singer of the sewing machine fame. In 1925, the property was sold. At this time, the large extension was added and the building became The Palace Hotel. During the Second World War, HM Government requisitioned The Palace for the Canadian Armed Forces. Trust Houses bought The Palace Hotel in 1950, and retained it until 1990 when, as Forte Hotels, the company was broken up and its many hotels sold off. After another company who kept it for ten years bought the Palace in 2001, the Palace was passed into its current ownership. Blending luxury and service with a modern, stylish interior as well as an exclusive health suite with indoor pool. The hotel boasts a prime seafront location with views across Torbay. Set in beautiful grounds on the esplanade, directly opposite the seafront with the town only a short walk away. En-suite bedrooms with complimentary tea and coffee making facilities, WiFi, flat screen television, hair dryer and trouser press. A lift services all floors. There is an entertainment programme running every evening.

Departure Dates:

January 16th	4 days	£210	
February 9th	5 days	£270	
March 20th	4 days	£275	Murder at the Palace
May 4th	5 days	£400	
June 26th	4 days	£350	
September 11th	4 days	£350	
October 16th	4 days	£320	
December 4th	4 days	£280	Turkey & Tinsel
December 27th	4 days	£310	Twixmas



Price Includes:

All coach travel/En-suite accommodation/D,B&B/ Regular Evening entertainment/ Excursions

Excursions for Paignton will be from the following depending on weather & seasonal events.

Newton Abbott

Exeter

Brixham

Dawlish & Teignmouth

RHS Malvern Spring Festival

RHS Malvern Spring Festival is one of the first major flower shows of the year, the festival opens the door into the summer season and its setting, with the backdrop of the Malvern Hills, provides the perfect backdrop to a plethora of plants and gardens.

Floral marquee
Show gardens
Talks
Food and drink
Shopping

For gardening enthusiasts, the RHS Malvern Spring Festival is a must-attend event in the UK's horticultural calendar.



The Show Gardens encourage creative freedom in garden design, Feature Gardens give designers the opportunity to explore a theme in horticulture, and NEW for 2026, Blooming Borders is a planting design category that offers opportunities for garden designers, plants people, horticulturists and landscapers.



Day One - Gloucester

One of Gloucester's strengths is its array of attractions. Cobble streets, narrow alleyways, and two shopping arcades link Gloucester's four main streets. The jewel in the crown, 11th century Gloucester Cathedral is an incredible masterpiece in stone, which has Romanesque and Gothic architecture, plus the tomb of King Edward II. Nearby are the Victorian Docks, with restored Victorian warehouses, a dry dock and the Mariners Chapel. The National

Waterways Museum celebrates the city's industrial past with canal boats and interactive displays. The historic streets are filled with fantastic shops, high street chains to quirky independents. Enjoy browsing designer bargains, quality local produce, antique gems and unique souvenirs.

Day Two - RHS Malvern Spring Festival

This is the perfect opportunity to prepare for the gardening season. Stunning show gardens and a variety of stalls selling an array of food and crafts. The pioneering Indoor Plant Gardens showcase creative ways of using indoor plants and the impact they can have on our daily lives. The gardens demonstrate how versatile and easily accessible indoor plants are, and how they're an enjoyable and convenient way to engage in horticulture year-round, regardless of whether or not you have outdoor space, and without being subject to the ever-growing challenges posed by the climate. There are also many talks and demonstrations offering many hints and tips. With five stages at the Festival, there is plenty of free advice on everything from propagating houseplants to recipes for cooking your allotment produce.

Best Western Gloucester Robinswood Hotel

All bedrooms are ensuite with television, telephone, hairdryer and tea & coffee making facilities.

Price Includes:

All coach travel/En-suite accommodation/Dinner, Bed&Breakfast/Gloucester Entrance to Malvern Spring Festival

Departure Date:

May 7th	2 days	£180
Single Supplement		£42



Scarborough

With its unrivalled position as one of Britain's premier coastal resorts, which lies close to North Yorkshire's rugged National Park. There are golden beaches, superb parks and gardens to enjoy as well as the natural beauty and historical heritage of the County of Yorkshire. Scarborough has been a traditional seaside destination for over a hundred years, with sweeping sands of the North and South Bays, combined with the wooded valleys and ornamental gardens means the resort is as popular as ever.

Cumberland Hotel (Leisureplex Hotels)

Extremely well situated on the South Cliff a few minutes walk from the Spa complex, beach and town centre. There are splendid views of the resort from the north facing rooms. The Bar lounge has a large dance floor where entertainment is provided most evenings, an attractive restaurant and a quiet lounge with free Wi Fi in public areas. All 86 bedrooms have a bath or shower and WC tea/coffee making facilities, hair dryer and TV with radio channels. There is central heating throughout the hotel. A lift serves all floors (few additional stairs to some rooms)

Price Includes:

All coach travel/En-suite accommodation/Dinner, Bed & Breakfast /Regular Evening entertainment/ Excursions/ Spring Breakaway includes free drink with Dinner

Departure Dates:

March 9th	5 days	£270	Spring Breakaway
May 27th	5 days	£400	
September 16th	5 days	£400	
Single Supplement	£0 - £52		
Garden View Supplement	£28 - £48pp		

Excursions

Whitby & Goathland
Bridlington



Southport

A classic Victorian town by the sea with a contemporary twist. Situated on England's North West coastline, it is renowned as Europe's most elegant seaside resort. It is the Floral Capital of the North West. Lord Street is a stylish, tree lined boulevard with elegant canopied shopping arcades, fountains and landscaped gardens. Southport's famous Victorian Pier is the oldest surviving iron pier which has been recognised with Grade II listed status.

(Britannia) Royal Clifton Hotel

The Royal Clifton Hotel in Southport is a stunning Grade II building, noted for its exceptional range of facilities and excellent standards of service. Over recent years it has been thoughtfully refurbished to offer you the comfort you expect in the best location for a hotel in Southport. The choice of bedroom accommodation options available at the hotel ensures almost any accommodation requirements and expectations are met. The restaurant has contemporary decor and a stylish atmosphere. En-suite bedrooms have flat screen TV, hairdryer, telephone and hospitality tray. There is a lift to all floors. This is a cashless hotel.

Price Includes:

All coach travel/ Excursions
En-suite accommodation/Dinner, Bed & Breakfast

Departure Dates:

May 18th	5 days	£305
August 3rd	5 days	£335
October 19th	5 days	£295



Excursions

Ormskirk
Liverpool



Scotland - Loch Lomond Shores, Oban & Inverary



Dunoon is situated on the Cowal peninsula on the western shore of the Firth of Clyde where Loch Long and Holy Loch join the sea. It is as beautiful as it is diverse, from the towering mountains of the north to the mellow scenery and sea lochs of the south. The town has a fine Victorian heritage with lovely gardens and century old villas which back onto a four mile flat promenade running along the front. Dunoon is in Scotland's first National Park and is surrounded by both the rolling hills and woodlands of the Argyll Forest Park and the lochs and mountains of the Southern highlands.

Holiday Insurance

Reminder: your accommodation booking is a legally binding contract. In the event of cancellation we are entitled to retain your deposit and ask for a further payment to compensate us for our loss. For your protection we suggest you take advantage of holiday cancellation insurance. We regret cancellations for whatever reason may be chargeable. We therefore recommend for peace of mind you take out cancellation insurance through an intermediary who is authorised and regulated by the Financial Services Authority.

SCALE OF CANCELLATION CHARGES

Period before departure within which written cancellation of holiday is received	Amount of cancellation charge as a %
More than 42 days	Deposit
42 - 29 days	50%
28 - 15 days	85%
14 - 1 days	100%
Departure date or later including voluntary termination whilst on holiday	100%

Selborne Hotel, Dunoon

Looking across the Clyde with pleasant lawns reaching down to the promenade and waters edge. Ground floor areas include a TV lounge, bar lounge with dance floor, quiet lounge and games room. With 98 en-suite bedrooms with central heating, tea/coffee making facilities, hairdryer and television. Entertainment is provided most evenings in the bar lounge. The lift serves almost all rooms. Bedrooms have a small change of level and are served by the lift to the half landing. The third floor rooms are in a section of the hotel not served by the lift. WiFi is available in public areas.



Price Includes:

All coach travel/En-suite accommodation/
Dinner B&B/Evening entertainment most nights/
Time at leisure in Oban/
Time at leisure in Inverary/
Time at leisure at Loch Lomond Shores

Departure Date

September 6th 7 days	£590
Single supplement	£90
Loch View supplement	£72 per person



Scotland



Rob Roy Hotel

The 2* popular hotel is situated in idyllic countryside at the gateway to the glorious Trossachs and is set within Scotland's first National Park. Offering a good choice of home cooked meals and comfortable en-suite accommodation with colour television and tea/coffee making facilities. The majority of rooms are on the ground floor and there is lift access to all rooms on the first floor. We class this as a budget hotel and in our opinion it represents excellent value for money.

Price Includes:

All coach travel/En-suite accommodation/Dinner, Bed & Breakfast/Entertainment/Excursions

Departure Date

March 16th	6 days	£365
December 6th	6 days	£370

A Taste of Scotland Excursions

Edinburgh - Scotland's capital city, Edinburgh is renowned for its heritage, culture, and festivals. Take a long walk around the centre to explore the World Heritage Sites of the Old Town and New Town, as well as all the area's museums and galleries. Pause to fortify yourself with tea and scones at the city's charming tea rooms or duck into a traditional pub.

Glasgow - Glasgow is one of the most exciting cities you'll ever come across. It offers a lively, bustling place, distinctive and full of character, where you are bound to get a very warm welcome indeed. This is a city with striking architecture, contemporary art spaces and fascinating museums, many of which are free. Glasgow city centre is one of the best shopping destinations in the UK, outside of London's West End, and when it comes to nightlife, Glasgow knows what it's doing. With a diverse culinary scene, abundance of pubs and bars as well as some of the UK's best music venues, this is the city for the night owls.



Stirling - A wee city with a big history, Stirling punches well above its weight for historic attractions and spectacular scenery, not to mention shopping, places to eat and exciting events. Take in the magnificent views of Stirling Castle's hill-top esplanade towards the National Wallace Monument on the edge of the rolling Ochil Hills before looking north east for the mountain peaks of Loch Lomond & The Trossachs National Park. Savour delicious food and drink on your holiday in Stirling in friendly pubs, cosy cafés and buzzing restaurants. At the local farmers' markets you can speak to local producers and pick up some tasty treats, or browse independent boutiques in the historic surroundings of the Old Town and the Victorian Stirling Arcade.

Gift Vouchers Available

Ask a member of staff for details



Shopping Weekends

Somerset Shopping Weekend

Always a sell out so book early, the weekend begins in Bath, with stylish boutiques and familiar high street names, top restaurants, cool cafes and unique gastro pubs. Staying at the 3* Wessex Hotel situated in Street with en-suite bedrooms and a lift to all floors. The hotel is within walking distance for shopping at Clarks Village Designer Outlet on Sunday with over 90 stores offering huge savings on a fantastic range of designer labels.

Departure Dates

January 10th	2 days	£115	Includes Sunday Lunch
January 17th	2 days	£115	Includes Sunday Lunch
October 10th	2 days	£120	Includes Sunday Lunch
October 17th	2 days	£120	Includes Sunday Lunch



Worcester and Gloucester Shopping Weekend

A perfect opportunity to explore and shop with the weekend beginning in Worcester located in the heart of the West Midlands a cultural city to shop with fantastic shops and boutiques alongside some of the best loved retailers. Worcester hosts stores full of one-off gifts, luxury fashion and jewellery and much more. Staying at the Whitehouse Hotel in Worcester right in the heart of the historic city centre with en-suite bedrooms and a lift to all floors. After breakfast we depart to spend Sunday in Gloucester visiting the Victorian docks, museums, shopping centres, bar and restaurants

Departure Dates

March 28th	2 days	£145
September 19th	2 days	£155
November 28th	2 days	£155
Single Supplement	£25	



Splendid Morecambe

Morecambe is the collective name for the three fishing villages of Bare, Poulton and Torrisholme and is a coastal town on Morecambe Bay in Lancashire. One of the most popular attractions and photo opportunities is Graham Ibbeson's 'Eric Morecambe' statue.



Auckland Hotel

Enjoy a relaxing break in great value rooms, clean and comfortable. En-suite bedrooms feature flat screen television and tea/coffee making facilities. From the lounge the beautiful sea views, sunsets and changing landscapes of Morecambe Bay can be admired from the picture windows.

Price Includes:

All coach travel/En-suite accommodation/Dinner, Bed&Breakfast /Evening entertainment/ Excursions

Departure Dates

April 27th	5 days	£400
November 2nd	5 days	£390 Turkey & Tinsel

Sea View Supplement £15 per person per night

The excursion will be from the following depending on weather and seasonal events.

Kendal Skipton Market Blackpool Lancaster Windermere

Skegness

Visiting Skegness on the Lincolnshire Seaside became ever more popular over the years though at first only the better off people were able to take advantage of the facilities provided in Skegness. Just up the coast from Skegness is the tranquil town of Mablethorpe which is perfect for a day out with the family. In Mablethorpe you can visit the Sea Sanctuary, take a walk on the beaches, shop till you drop and much more.

Savoy Hotel

The Savoy, Skegness's Premier Sea Front Hotel. Offering 46 en-suite stylish bedrooms, all furnished to a very high standard and fully equipped with modern facilities. Renowned for their superb Restaurant, where the experienced Chef's offer delicious home cooked food, freshly prepared using only the finest of Lincolnshire's produce and delivered to your table with a friendly and professional service. Enjoy a drink and meet new friends in the contemporary Savoy Lounge and Bar. Relax in comfort to live professional entertainment during the holiday season. The Savoy enjoys an excellent Central Promenade location and is an ideal base to explore the many local attractions. There is lift access to two floors and then one flight of stairs to the third floor.

Price Includes:

All coach travel/En-suite accommodation/Dinner, Bed&Breakfast /Evening entertainment/ Excursions

Departure Dates:

July 27th	5 days	£450	
October 26th	5 days	£410	Turkey & Tinsel
December 29th	5 days	£490	New Year



The excursions will be from the following depending on weather and seasonal events.

Lincoln Boston Market Mablethorpe Spalding

St Agnes - Cornwall

St. Agnes is a picturesque village on the north coast of Cornwall. Steeped in mining history, the village still retains a traditional friendly Cornish atmosphere and makes a wonderful base for your holiday. The dramatic coastline and breathtaking scenery includes the stunning Chapel Porth Beach and St Agnes Beacon, the hill that looms high over the village and the coast.



Rosemundy House Hotel

The Rosemundy House Hotel is a family run hotel, the elegant Georgian Residence dates back to the 18th century. A popular choice which has customers returning for another stay. The hotel now offers forty six tastefully appointed bedrooms. All en-suite bedrooms are centrally heated with flatscreen TV's with Freeview, direct dial telephones, hairdryers and beverage tray, The hotel is set in it's own grounds with private secluded gardens and woodland.

Price Includes:

All coach travel/En-suite accommodation/Dinner, Bed&Breakfast/Evening entertainment/ Excursions

Departure Dates:

March 23rd	5 days	£380	
November 23rd	5 days	£410	Turkey & Tinsel

Excursions will be from the following depending on weather and seasonal events.

Newquay Truro St Ives Penzance Falmouth

Special Events

ABBA Voyage -

It's the experience we have all been waiting for....

Seated tickets of ABBA's biggest, most popular hits – each handpicked with great care by the band. Agnetha, Björn, Benny and Anni-Frid have created the kind of concert they always wanted, performing for their fans at their very best: as digital versions of themselves backed by today's finest musicians. Blurring the lines between the physical and digital, see the magic of ABBA brought to life using the latest in motion capture technology.

It's the greatest ABBA performance the world has never seen. Until now.

Blending cutting-edge technology, spectacular lighting, and some of the most beloved songs ever written, ABBA take to the stage in a whole new way. In a stunning, purpose-built arena, one of the most popular groups in history appear as digital avatars in a 'ground-breaking' (Metro) concert that really 'needs to be seen to be believed' (BBC).

Day One: Journey straight to Hotel and then off to enjoy Abba Voyage, in plenty of time ahead of concert start time, concert running time approximately 90 minutes with no interval.

Day Two: Late breakfast depart London, we head to Windsor for time at leisure.

Price Includes: All coach travel/En-suite accommodation/Bed&Breakfast/ Seated Tickets 6pm performance /Time at leisure at Windsor on Day 2.

Departure Dates:

February 8th	2 days	£200
March 22nd	2 days	£200
March 29th	2 days	£200
Single Supplement	Feb/March	£48
September 20th	2 days	£240
Single Supplement	Sep	£60



Tales in the Dales - Emmerdale

Step into the world of Emmerdale with a guided Coach Tour of iconic filming locations, Emmerdale Village Tour, followed by Buffet lunch with a cast member who will share exclusive behind-the-scenes insights.

Day One: Travel to our Hotel, 4* Cedar Court-Hotel Harrogate. Located in the heart of historic Harrogate, the Cedar Court Hotel Harrogate offers exceptional accommodation overlooking 200 acres of the pristine Stray parkland.

Day Two: Emmerdale Film Locations & Village Tour. Visit the working Emmerdale Village set, located within the picturesque Harewood Estate in Leeds. As the home of Yorkshire's favourite soap, you'll step into the familiar surroundings of the Emmerdale Village. This fully guided outdoor walking tour of the exterior Emmerdale sets will give you the chance to explore the village as our guides give you an insight into how the dramatic storylines of Emmerdale make the journey from script to screen. Walk in the footsteps of your favourite characters on a tour of the outdoor TV set. Buffet lunch with an Emmerdale star. Location for lunch accompanied by a cast member TBA.

Please note: comfortable footwear recommended.

Day Three: Journey home

Price includes: All Coach Travel/ En-Suite Accommodation/ D,B&B/ Entry Emmerdale Guided Tour.

Departure Date:

August 9th	3 days	£340
Single Supplement		£60



Wheelchair access is not recommended due to the nature of the tour and uneven surfaces.

Important Note: We cannot guarantee that all aspects of Emmerdale The Village Tour/facilities will be available. If any aspect is not provided or is provided in a different form no compensation will apply. The set is a live TV set.

Special Events

Mamma Mia - The Party at O2 London - A LOVE STORY, SET IN A GREEK TAVERNA



You've seen the show and loved the songs – now you're invited to the party in a Greek Taverna on Skopelos!
Dance, Dine and have the time of your life!

Feel transported to the island of Skopelos to dance, dine and have the time of your life! As the sun sets, you'll take your seats at Nikos' family-run taverna where you'll enjoy a delicious four-course Greek meal. As the sun sets over the Mediterranean. Find yourself lost in a fabulous world as a warm, romantic, and funny story is performed all around you.

Explore the glorious decor, which once served as the backdrop to the iconic movies, and now dazzles the guests.

Plan your getaway with family and friends to Mamma Mia! The Party for the ultimate Greek holiday experience to remember. Discover the food of Skopelos. Explore a four-course Greek meal, freshly made at Nikos Taverna.

Enjoy a traditional sharing Greek mezze and iconic Greek salad with spanakopita, followed by braised lamb stifado and slow-cooked beef, served with garlic-roasted baby potatoes and roasted vegetable briam. Round your evening off with a sumptuous dessert trio poikilia glyko, including orange ravani cake, Greek yoghurt with candied karoto, lemon ouzo curd and cream filled kokakia, and a choice of tea & coffee with apricot baklava.

For vegetarian & vegan guests, we offer wonderful alternative dishes. For your main, enjoy a potato and aubergine moussaka. For dessert, we serve an alternative dessert trio poikilia glyko, including a Greek donut served with a sweet fig jam, coconut yoghurt with candied karoto and mixed berries for vegan guests.

Our delicious four-course Greek meal is served as sharing platters between groups on tables, made with the freshest ingredients and delivered straight to your table.

Day One: Arrive in London and check into our hotel. Time for a quick freshen-up before we meet up again later as we go to the O2 in Greenwich for Mamma Mia! The Party. Coach will depart the experience once show finishes - if you wish to stay for the disco - hotel is about 25 minute cab journey away.

Day Two: Late breakfast depart London, we head to Windsor for time at leisure .

Seating area Tier B



All food is freshly delivered to your table by wonderful waiting staff. The live action takes place around your tables and on special sets, you can sing, dance, and join in as much as you want. This is a cashless venue so you'll need a suitable bank card - or you can use your mobile - to pay for drinks and merchandise. The Party is a theatrical experience where the action takes place at multiple points around Nikos Taverna.

Price Includes:

All coach travel/En-suite accommodation/Bed&Breakfast/ Tier B seated area at 6.30pm evening performance at Mamma Mia - The Party /Time at leisure at Windsor on Day 2.

Departure Dates:

January 17th	2 days	£365
Single Supplement		£45
August 27th	2 days	£310
Single Supplement		£60



Spirited Cheer in the Heart of England

A winter escape to the Heart of England with cosy traditions, twinkling markets & winter tipples! Enjoy a heartwarming escape to the Heart of England, where cosy traditions, sparkling markets, and seasonal tipples await. Step into Christmas past at Hanbury Hall, a Georgian country retreat beautifully dressed for the season with retro decorations and timeless charm. Savour a leisurely day in Shakespeare's England with a visit to Stratford-upon-Avon, complete with a 60-minute gin-tasting cruise along the River Avon. Then head to Birmingham's famous Frankfurt Christmas Market

The Charlecote Pheasant Hotel

A vegetable research centre during WWII and later a tearoom with an exotic bird garden, this 18th century manor turned hotel is an establishment with a rich history and a variety of amenities that can be enjoyed by guests of all ages. The Charlecote Pheasant Hotel has a capacity of 70 rooms, with its own gardens, tennis court and a 5-acre field accessible to all guests. The hotel features a heated salt-water pool, equipped with sun loungers and beach chairs for relaxation.



Price Includes:

All coach travel/En-suite accommodation/Dinner, Bed&Breakfast /Excursions/ 2 nights evening entertainment/ Tea, coffee and festive cake, mince pies on arrival/ Christmas dinner on one evening.

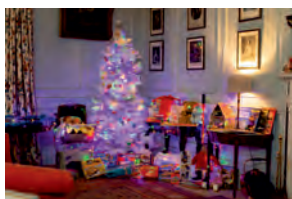
Departure Dates:

November 30th	5 days	£500
Single Supplement	£80	



Hanbury Hall

Celebrate Christmas at Hanbury Hall with a joyful throwback to the 1970s and 80s. Retro lights, tinsel, and classic hits bring a playful sparkle to this elegant Worcestershire retreat. Inside the Long Gallery, explore a nostalgic Fashion, Art and Photography Exhibition curated by Anne Walter. From flared trousers to bold prints, it's a colourful nod to two unforgettable decades. Step beyond the festivities to discover the grandeur of early Georgian life, with dramatic wall-paintings by Sir James Thornhill. Stroll through restored formal gardens by George London and enjoy the winter charm of the orchards, orangery and walled garden.



Images courtesy of Shaun Fellows (interior) and the National Trust (exterior).

Shakespeare Gin Distillery Cruise - River Avon Cruise, guided tasting

Enjoy Stratford from the River Avon on a 60-minute gin tasting cruise. Travel along the canal to view sights such as the Royal Shakespeare Theatre, Holy Trinity Church, and Shakespeare's burial place. The skipper will share information about the river's wildlife and the canal's heritage, while you enjoy a tutored tasting of 3 award-winning crafted gin samples and a gin and tonic to drink in a souvenir glass to take home.

Duration: approx. 60 mins



Birmingham Christmas Market

The Birmingham Christmas Market, officially the Frankfurt Christmas Market, is a large, authentic German-style market in central Birmingham, famous for its festive atmosphere, traditional German food (bratwurst, pretzels, Glühwein), handcrafted gifts, and extending through New Street and Victoria Square.



It's a major event, known for its numerous stalls, festive drinks, lights, and attractions like an ice rink and Ferris wheel nearby. Why not pick up some presents for your family and friends with everything from handcrafted wooden decorations and delicate glass baubles to in the form of the ever-favourite crystal lamps, Sounds of Nature, hand-crafted leatherwork, toys, jewellery and much more besides!

South Coast Explorer

A small seaside town on the south coast of England in the county of West Sussex which can trace its roots back to when it was a small fishing village. On average Bognor Regis has more sunshine than any other town in Britain, making it the sunshine capital. Make sure you visit one of the town's parks and gardens as they are one of the South East In Bloom competition winners. There will be time for lazing on the beach, shopping at department stores, arcades and souvenir kiosks. There are also many lively sea front cafes and bars which give the town a very relaxed atmosphere.



Royal Norfolk Hotel (Leisureplex Hotels)

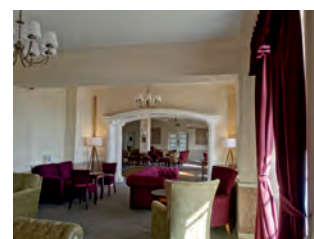
A magnificent Georgian hotel situated on the sea front, very close to the pier and a short walk to the shops. This 2* hotel overlooks its own extensive gardens to the beach which is predominantly pebbly with clean and inviting waters. All the en-suite bedrooms are comfortably furnished with colour television and tea/coffee making facilities. Nelson's Restaurant looks out across the hotel's gardens to the sea offering superb views. A lift serves most rooms although there are some stairs between floors.

Price Includes:

All coach travel/En-suite accommodation/Dinner, Bed&Breakfast /Evening entertainment/ Excursions/ Spring Breakaway includes free drink with Dinner

Departure Dates:

March 9th	5 days	£270	Spring Breakaway
May 23rd	5 days	£380	
September 16th	5 days	£390	
Single Supplement		£0 - £52	
Sea View Supplement		£28 - £48 per person	



The excursion will be from the following depending on weather and seasonal events.

Worthing Chichester

Tenby

Clarence Hotel

A Grade 11 listed building superbly situated in the middle of the Esplanade on the South Shore with superb views of St Catherine's Island, Castle Beach, Caldey Island and Giltar Point. The town centre is only a few minutes level walk away. En-suite accommodation has a flat screen tv, tea and coffee making facilities and hairdryer. A popular hotel with friendly, helpful staff. Relax by the fire on the comfortable chairs overlooking the sea. The hotel has a lift and level, ground floor access to the Seagull Bar, Rose Garden, Reception and Dining Room.



Price Includes:

All coach travel/En-suite accommodation/Dinner, Bed&Breakfast / Evening entertainment most evenings/ Excursions

Departure Dates:

March 2nd	5 days	£325	Happy Hour 17.30-18.30 & 20.00-21.00
May 15th	4 days	£390	Happy Hour 17.30-18.30 & 20.00-21.00
November 9th	5 days	£380	Happy Hour 17.30-18.30 & 20.00-21.00 Turkey & Tinsel

Excursions for Tenby will be from the following depending on weather and seasonal events.

Haverfordwest St Davids Carmarthen Pembroke

Scenic Snowdonia

Lion Hotel

The hotel is in an excellent location on the High Street with views of the castle. There are several steps to the front of the hotel with a wheelchair lift from street level into reception. Level access from reception to all ground floor areas. Entertainment room situated on the ground floor with bar and dance floor. Free Wi Fi in public areas. The 79 en-suite bedrooms have tea/coffee making facilities, telephone, hair dryer and TV. There is a large lift that serves all floors.

Price Includes:

All coach travel/En-suite accommodation/Dinner, Bed&Breakfast /Evening entertainment/ Excursions/

Departure Dates:

June 22nd	5 days	£560
Single Supplement	£178	



Itinerary:

Caernarfon

Caernarfon is home to Wales' most famous castle which is prominent in the skyline for all to see and the town's narrow streets has a choice of shops. The stylish redeveloped waterfront Victoria Dock is a popular yachting marina set alongside the beautiful harbour looking out over the scenic Menai Straits and the Isle of Anglesey.

Betws Y Coed & The Ffestiniog Railway

In Porthmadog relax and enjoy a journey on the Ffestiniog Railway, the oldest independent railway company in the world established in 1832. We'll travel 13½-miles on a 70 minute journey as we climb 700 feet through tranquil pastures and magnificent forests, past lakes and waterfalls, through tunnels and around mountains.

Snowdon Mountain Railway

Take time to appreciate the fantastic and unique journey on The Heritage Steam Experience. A return journey allows for a 30 minute stop-over before passengers must return on the same train. As you make your way up the mountain experience awe-inspiring views and uncover the mountain's hidden secrets, from viaducts, waterfalls, gorges to the remnants of abandoned farms, chapels and medieval settlements.

Torquay

Torquay is one of our favourite holiday destinations, situated at the heart of 22 miles of unspoilt coastline known as the 'English Riviera' because of its mild climate, sparkling blue waters, blue-flag beaches, attractive gardens wonderful array of continental style cafes, restaurants and cocktail bars. It is the perfect choice for a Devon seaside holiday or short break.

Metropole Hotel (Leisureplex)

A five minute walk from the beach, the hotel offers a great location to explore. The hotel features a restaurant, relaxing lounge and bar with dance floor, where you can find entertainment on most evenings. With an outdoor seating area, perfect for soaking up the sun and enjoying a relaxing drink. En-suite bedrooms with tea and coffee making facilities, hairdryer, flat screen TV with Freeview and radio. The lift serves all floors.

Price Includes:

All coach travel/En-suite accommodation/Dinner, Bed&Breakfast /Evening entertainment most evenings/ Excursions

Departure Dates:

March 23rd	5 days	£280
------------	--------	------



Excursions for Torquay will be from the following depending on weather and seasonal events.

Newton Abbott	Exeter	Brixham	Dawlish & Teignmouth
---------------	--------	---------	----------------------

Torquay (continued)

Torquay is one of our favourite holiday destinations, with its iconic palm trees, busy harbour, international marina, sandy beach and wonderful array of continental style cafes, restaurants and cocktail bars. It is the perfect choice for a Devon seaside holiday or short break.

Ashley Court Hotel

The popular 2* budget hotel is situated in a central position and only a short walk to the town centre and seafront. The hotel offers a friendly atmosphere, comfortable en-suite accommodation, good food and entertainment every night. There is also an outside heated swimming pool (during Summer months) with a lovely sun terrace. There is a lift but it does not service all floors.

Price Includes:

All coach travel/En-suite accommodation/Dinner, Bed & Breakfast /Evening entertainment/ Excursions

Departure Dates:

January 23rd	3 days	£155	Tribute Weekend
January 30th	3 days	£155	Tribute Weekend
February 28th	3 days	£155	St David's Day Tribute Weekend
March 2nd	5 days	£230	
March 14th	3 days	£150	Mothering Sunday
March 20th	4 days	£185	
March 23rd	5 days	£235	
April 3rd	4 days	£220	Easter Weekend
April 10th	3 days	£155	
April 13th	5 days	£265	
May 2nd	2 days	£105	Sunday Lunch
May 11th	5 days	£265	
June 12th	3 days	£165	
June 15th	5 days	£290	
June 20th	2 days	£90	Seaside Special
July 4th	2 days	£105	Sunday Lunch
July 6th	5 days	£305	
July 10th	3 days	£165	
July 25th	2 days	£110	Sunday Lunch
July 27th	5 days	£305	
August 7th	3 days	£165	
August 24th	5 days	£305	
August 28th	4 days	£235	
September 5th	2 days	£90	Seaside Special
September 21st	5 days	£305	
October 2nd	3 days	£145	
October 5th	5 days	£270	Bar Promo
October 19th	5 days	£260	Bar Promo
November 6th	3 days	£165	Xmas Party Sunday Lunch
November 9th	5 days	£275	Turkey & Tinsel
November 23rd	5 days	£280	Turkey & Tinsel
November 27th	3 days	£165	Xmas Party
December 4th	3 days	£165	Xmas Party
December 11th	3 days	£160	Xmas Party Sunday Lunch
December 14th	5 days	£230	Turkey & Tinsel
December 23rd	5 days	£520	Christmas
December 27th	4 days	£215	Twixmas
December 30th	4 days	£385	New Year

House Parties 2026

January 19th	5 days	£190
January 26th	5 days	£190
February 2nd	5 days	£195

Join us for a firm favourite for fun, fun, fun ! On arrival you will be treated to tea and cake/biscuits while your cases are taken to your rooms. During the week there will be 3 afternoons to join in the fun and games with bingo and quizzes too, a bar promotion to help you along with a light lunch. To end the week on a high we have a party night with a glass of wine with dinner, balloons, streamers and fancy dress so don't forget to bring some silly costumes with you.



Excursions for Torquay will be from the following depending on weather and seasonal events.

Newton Abbott Exeter Brixham Dawlish & Teignmouth

Torquay (continued)



Derwent Hotel (TLH Resort)

If you enjoy a lively atmosphere where there's always plenty going on, the Derwent is the place to stay. With comfortable en-suite bedrooms, bright, modern bars and lounges and a friendly, informal restaurant with the popular buffet breakfast. The Starlight Lounge is the main hub for night time entertainment and dancing so there's never a dull moment. With a full programme of day time activities which include short mat bowls, skittles, tea dances, quizzes, competitions and bingo. A lift serves most of the bedrooms. The hotel has extensive indoor leisure facilities and an outdoor swimming pool.



Departure Dates

Derwent Hotel (TLH Resort)

January 26th	5 days	£210	
March 30th	5 days	£275	
April 13th	5 days	£330	
November 23rd	5 days	£315	T&T
December 4th	4 days	£245	T&T
December 30th	4 days	£440	New Year

Toorak Hotel (TLH Resort)

February 9th	5 days	£270	
July 13th	5 days	£370	
August 24th	5 days	£370	

Carlton Hotel (TLH Resort)

June 15th	5 days	£360	
-----------	--------	------	--

Victoria Hotel (TLH Resort)

July 13th	5 days	£350	
-----------	--------	------	--

Riviera Hotel

Offering good value, friendly and comfortable accommodation throughout the 142 en-suite bedrooms with digital flat screen tv, tea/coffee making facilities. The hotel has an indoor swimming pool, available April - October. Dinner at the restaurant will have traditional cuisine with a choice of hot and cold desserts too. Then join everyone at the Show Bar for the evening entertainment. There's bingo followed by a cabaret act and dancing until late. Or watch the game on one of the large flat screens at the Sports Bar. There is a lift at the hotel but corridors and steps are unavoidable due to the nature of the building.



Departure Dates

January 23rd	4 days	£170	Tribute Wknd
February 9th	5 days	£210	Bar Promo
March 30th	5 days	£245	Bar Promo
April 20th	5 days	£265	Bar Promo
May 4th	5 days	£315	
May 8th	4 days	£265	
June 27th	2 days	£120	Tribute Wknd
July 25th	2 days	£120	Tribute Wknd
August 15th	2 days	£120	Tribute Wknd
September 5th	2 days	£120	Tribute Wknd
October 26th	5 days	£290	Bar Promo
November 30th	5 days	£270	T&T Bar Promo
December 11th	4 days	£200	Tribute Wknd
December 14th	5 days	£270	T&T Bar Promo
December 23rd	4 days	£550	Christmas
December 27th	4 days	£260	Twixmas
December 30th	4 days	£460	New Year



Price Includes:

All coach travel/En-suite accommodation/Dinner, Bed&Breakfast /Evening entertainment/Excursions

Excursions for Torquay will be from the following depending on weather and seasonal events.

Newton Abbott

Exeter

Brixham

Dawlish & Teignmouth

Tribute Breaks

Book one of our tribute themed breaks and enjoy an entertaining holiday with friends, family and loved ones. A holiday with entertainment are ideal for celebrating special occasions, including birthdays, anniversaries, providing everyone with unforgettable memories. There's no better way to enjoy your favourite music than watching some of the best tribute acts around. Sing along, clap, dance or just enjoy the entertainment. Tribute breaks include dinner, bed and breakfast. The entertainment takes place at the hotel.

Ashley Court Hotel, Torquay

The popular 2* budget hotel is situated in a central position and only a short walk to the town centre and seafront. The hotel offers a friendly atmosphere, comfortable en-suite accommodation, good food and entertainment every night. There is also an outside heated swimming pool with a lovely sun terrace. There is a lift but it does not service all floors.

Price Includes:

All coach travel/En-suite accommodation/Dinner, Bed & Breakfast

Departure Dates

January 23rd	3 days	£155	Phil Collins & Madonna
January 30th	3 days	£155	Buddy Holly & 2 Beatles
February 7th	2 days	£69	Tina Turner
February 28th	3 days	£155	Tom Jones & Shirley Bassey



The Babbacombe Hotel

Join us at the 80 roomed seafront hotel with en-suite rooms offering friendly and comfortable surroundings with beautiful sea views. The Babbacombe Hotel enjoys a level position directly on the sea front overlooking the famous Babbacombe Downs with far reaching views across Lyme Bay, many of the bedrooms have stunning views and private balconies. All public areas are situated on the ground floor and the hotel has a lift to most bedrooms.

Price Includes:

All coach travel/En-suite accommodation/Dinner, Bed & Breakfast

Departure Dates

March 13th	4 days	£230	Frankie Valli, Dolly Parton & 2 Beatles
October 30th	4 days	£280	Neil Diamond, Dolly Parton & Elvis



The Riviera Hotel, Torquay

Offering good value, friendly and comfortable accommodation throughout the 142 en-suite bedrooms with digital flat screen tv, tea/coffee making facilities. The hotel has an indoor swimming pool, available April - October. Dinner at the restaurant will have traditional cuisine with a choice of hot and cold desserts too.

Price Includes:

All coach travel/Refurbished en-suite accommodation/Dinner, Bed & Breakfast

Departure Dates

January 23rd	4 days	£170	Dolly Parton, Frankie Valli & Disco Divas
June 27th	2 days	£120	To be confirmed
July 25th	2 days	£120	To be confirmed
August 15th	2 days	£120	To be confirmed
September 5th	2 days	£120	To be confirmed
December 11th	4 days	£200	Abba, George Michael & Disco Divas
Single Supplement	£5 pppn		



We cannot guarantee Tribute Acts available on booked date, if any Tribute is not provided or is provided in a different form no compensation will apply.

Warner Leisure Hotels - Cricket St Thomas

This classic country house is set in splendid parkland, with colourful gardens, lakes, and a unique woodland area. The scene of much of the famous TV comedy, To The Manor Born. The 1820's manor has 12 Historic rooms and suites in Cricket House, all exquisitely furnished, they stay true to their roots with period detail like original fireplaces and large sash windows for enjoying the garden views. Standard and Signature rooms, 63 all in the Courtyard, are located between Reception and Cricket House with easy access to the main amenities. The Walled Garden is a lovely quiet location near the leisure club, home to 164 Standard and Signature rooms, some with patios.

The hotel provides extensive entertainment, including nightly live performances, and excellent dining. Coffee Nest, serves up delicious lunch and snack options, featuring mouth-watering light bites and freshly baked pastries. Warner now operate on a cashless basis for your ease and convenience. Set up a charge card on arrival with one of the friendly reception team.

Price Includes:

All coach travel/En-suite accommodation//Dinner, Bed&Breakfast /Entertainment/Excursions

Departure Dates

June 22nd 5 days £470

Midweek Variety - Featuring International Soprano Chess Taylor - with an eclectic mix of show stopping songs, plus the Warner Company.

Signature Supplement £30 per person

Excursions for Cricket St Thomas will be from the following depending on weather and seasonal events.

Burnham on Sea Taunton Weston Super Mare Sidmouth Weymouth

Warner Leisure Hotels - Norton Grange

One of the real gems of your stay at Norton Grange, always a favourite destination is the views of the Solent, a busy and colourful waterway which stretches from Cowes to the Needles. As you walk around the beautiful grounds with tropical palms and then visit the beach, you may have a feeling of being abroad. The comfortable chalet accommodation and delicious 3 course dinners will leave you with the cosy feeling of being back home. With a host of facilities from an indoor heated swimming pool, an all weather bowls green to archery and a 9 hole Pitch n Putt, you'll have plenty to do. Then in the evening, just sit back and enjoy the very best of live entertainment with a show. Also introducing Coffee Nest, serving up delicious lunch and snack options. It's taken over from Market Kitchen as the go-to lunch spot at Warner Hotels, featuring mouth-watering light bites and freshly baked pastries. Warner now operate on a cashless basis for your ease and convenience. Set up a charge card on arrival with one of the friendly reception team.

Price Includes:

All coach travel/En-suite accommodation/ Dinner, Bed & Breakfast /Entertainment/ Excursions/ Return Ferry Crossings

Departure Dates

June 29th 5 days £470

Midweek Variety - Featuring The Christina Rogers Show, with hits from Celine Dion, Queen, Tome Jones, Lady Gaga, Prince, Bon Jovi, Etta James, Aretha Franklin, Abba, Tina Turner and Whitney Houston.



October 5th 5 days £380

Midweek Variety - Featuring the beautiful voice of, Leanne Mitchell, with an eclectic musical journey from the soul of Etta James and Whitney Houston, modern classics of Adele, through to West End greats, and beautiful operatic arias

Premier Room Upgrade £30 supplement per person

Excursions for Norton Grange will be from the following depending on weather and seasonal events.

Newport

Ryde

Shanklin & Godshell

Island Tour

Warner Leisure Hotels - Lakeside, Hayling Island

A traditional seaside escape, a welcoming chalet village beside the sandy south coast on Hampshire's Hayling Island. With fantastic views and walks overlooking Chichester harbour. There's a choice of 226 rooms which require an outside walk to the main venue. Standard rooms are allocated on ground floor or first floor chalets. There is combined show venue and restaurant area. Within the grounds there is an extensive fishing lake, indoor swimming pool, indoor short mat bowls. With free WiFi on site. Warner now operate on a cashless basis for your ease and convenience. Set up a charge card on arrival with one of the friendly reception team.



Price Includes:

All coach travel/En-suite accommodation//Dinner, Bed&Breakfast /Entertainment/Excursions

Departure Dates

August 10th 5 days £430

Midweek Variety - Featuring Danny Posthill, a comedy impressionist with unbeatable stand up and a string of impressions, such as Alan Carr, Michael McIntyre and Sarah Millican, plus Jamie Flanagan pays tribute to Michael Buble.



Excursions for Lakeside will be from the following depending on weather and seasonal events.

Bognor Regis Arundel
Portsmouth & Southsea Chichester

Warner Leisure Hotels - Littlecote House

Elegantly located in the Royal county of Berkshire this spectacular Grade I listed Tudor property was graced by royalty such as Elizabeth I and Charles II and is where Henry VII wooed Jane Seymour, his future bride. Explore its ancient rooms, including the Cromwellian Chapel and the Dutch Parlour. Outside stroll around the beautiful surroundings whilst exploring the landscaped gardens, patios and secret spots. The en-suite bedrooms are purpose built and adjoin the main hotel but are set apart from the old house. They have colour TV, tea/coffee making facilities, hairdryer and comfy chairs. Enjoy meals in the spacious Popham restaurant. Facilities include an indoor heated swimming pool, sauna, steam room, salon spa, outdoor bowls green, golf putting, archery, croquet, tennis courts, fencing and games room. Warner now operate on a cashless basis for your ease and convenience. Set up a charge card on arrival with one of the friendly reception team.



Price Includes:

All coach travel/En-suite accommodation/ Dinner, Bed & Breakfast /Entertainment/ Excursions



Departure Dates

April 20th 5 days £440

Mid Week Variety - A night of song & laughter with Marc Bolton, plus Anthony Stuart Lloyd delivering soul-stirring renditions of timeless

classics.

Premier Room Upgrade £30 supplement per person

Excursions for Littlecote House will be from the following depending on weather and seasonal events.

Newbury Marlborough Bath
Salisbury Oxford

Weston Super Mare

A traditional Victorian seaside resort located at the foot of the Mendip Hills with magnificent views across the Bristol Channel to South Wales. Miles of golden sands, excellent shopping facilities, a pedestrianised High Street as well as the Sovereign Shopping Centre. Intriguing antiques, books and craft work are found just off the beaten track, amongst Weston's narrow side streets. Weston-super-Mare is the perfect gateway to all the attractions that Somerset offers, ideally situated to explore the whole North Somerset area including the picturesque town of Clevedon with its iconic Grade I listed Pier and Portishead, where you can unwind and dine out by the vibrant marina.

New Ocean Hotel

A warm friendly welcome awaits all guests at this popular 2* hotel which is situated at the far end of the promenade offering spectacular views over the Marine Lake and across the bay. En-suite bedrooms are comfortably furnished with colour tv and tea/coffee making facilities, an excellent choice of home cooked meals are offered nightly in the restaurant.

There is a 4 hour free bar every night between 6pm-10pm

Departure Dates

January 19th	5 days	£260	Solo Traveller
February 20th	4 days	£260	
March 13th	4 days	£280	
April 10th	4 days	£290	
May 15th	4 days	£325	
June 5th	4 days	£325	
July 10th	4 days	£325	
July 20th	5 days	£375	
August 14th	4 days	£340	
August 24th	5 days	£390	
September 11th	4 days	£325	
October 9th	4 days	£310	
November 13th	4 days	£320	Carnival T&T
November 27th	4 days	£325	Xmas Party Wknd
December 23rd	5 days	£680	Christmas
December 27th	4 days	£315	Twixmas
December 30th	4 days	£550	New Year



Price Includes:

All coach travel/En-suite accommodation/Dinner, Bed&Breakfast /Evening entertainment/Excursions

The Royal Grosvenor Hotel

Enjoy a drink at the hotel with views of the sea, while the lounge lead to a large terrace overlooking the lawns, seafront and the Grand Pier. En-suite bedrooms have flat screen televisions, tea / coffee making facilities, hair dryers and free WiFi. The large pleasant dining room offers a buffet style breakfast so you can eat as much as you like, evening meal is prepared by their long established chef. There is a lift at the hotel.

Departure Dates

April 17th	4 days	£280	
June 12th	4 days	£280	
October 2nd	4 days	£280	
November 20th	4 days	£280	Turkey & Tinsel

Sea View Supplement £20 per room per night



Price Includes:

All coach travel/En-suite accommodation/Dinner, Bed&Breakfast /Evening entertainment/Excursions

Excursions for Weston will be from the following depending on weather and seasonal events.

Taunton

Burnham

Weymouth

It's such a special place with a beach, esplanade, historic harbour, marina and nature reserve encircling the town centre. Weymouth is a superb base to explore the spectacular coastal scenery on a walk or head slightly inland and you'll discover the county's rural charms. Weymouth's long arc of fine golden sand is second to none.

Crown Hotel

The charm and character of the 3* Crown Hotel lies in the warm and friendly atmosphere which always prevails. The management takes a special interest in making sure your stay is a total success, whether it be for business or pleasure.

The hotel is located in an extremely favourable position at the top of Weymouth's town centre, next to the Town Bridge overlooking the historic fishing harbour, and just a few minutes' walk from the picturesque Brewer's Quay. Weymouth's beautiful sandy beach is less than 5 minutes' walk from the hotel.

Hotel facilities include a first floor residents' lounge, The Onyx Bar and Restaurant and a residents' bar where there is nightly entertainment during the season. There is also a passenger lift which serves all floors. En-suite rooms have colour tv, internal telephone and tea/coffee making facilities. The dining room is on the ground floor.



Departure Dates

February 27th	3 days	£195	Sunday Lunch
March 9th	5 days	£345	
March 21st	2 days	£150	Sunday Lunch
April 3rd	4 days	£285	Easter
April 17th	4 days	£290	
April 27th	5 days	£370	
May 4th	5 days	£390	
May 15th	4 days	£315	
May 23rd	2 days	£150	Sunday Lunch
June 1st	5 days	£420	
June 12th	4 days	£345	
June 19th	4 days	£345	Veterans Weekend
June 26th	4 days	£345	
August 1st	8 days	£660	
August 29th	2 days	£150	Sunday Lunch
August 31st	5 days	£430	
September 19th	8 days	£660	
October 19th	5 days	£350	
November 9th	5 days	£360	Turkey & Tinsel
December 7th	5 days	£360	Turkey & Tinsel
December 30th	4 days	£415	New Year



All coach travel/ En-suite accommodation/
Dinner, Bed & Breakfast/ Evening entertainment/ Excursions

Excursions for Weymouth will be from the following depending on weather and seasonal events.

Poole

Dorchester

Portland

Weymouth (continued)

Royal Hotel (Leisureplex)

The elegant, Grade II listed Royal Hotel, Weymouth is right on the seafront placing you at the heart of this classic seaside resort. The Royal is an impressive building of intricate architecture and boasting fantastic views over the beach and bay.

Just a short stroll to the shops, seaside attractions and the famously beautiful harbour and marina, the location could not be better for exploring all that Weymouth has to offer.

With 71 En-suite bedrooms all with tea/coffee making facilities, hair dryer and Freeview TV with radio channel. Delightful Bar and Lounge with dance floor for entertainment. Free Wi-Fi in public areas

Departure Dates

February 20th	4 days	£260	Spring Breakaway
May 13th	5 days	£400	
August 19th	5 days	£450	
November 13th	4 days	£270	Festive Sparkle
November 16th	5 days	£350	Turkey & Tinsel
Single Supplement		£0 - £52	
Sea View Supplement		£21pp - £48pp	
Superior Room Supplement		£21pp - £48pp	



All coach travel/ En-suite accommodation/
Dinner, Bed & Breakfast/
Evening entertainment/ Excursions
Spring Breakaway includes free drink with Dinner

Excursions for Weymouth will be from the following depending on weather and seasonal events.

Poole

Dorchester

Portland

Worcester and Gloucester City Break

Start the weekend with a visit to Worcester with it's seemingly endless streets of individual shops set against larger retail shops. Worcester Cathedral is a magnificent sight as it rises majestically above the River Severn with it's royal tombs, medieval cloisters, ancient crypt and chapter house and beautiful Victorian stained glass it is well worth a visit. Departing after breakfast we make our way to Gloucester known for it's 11th century Cathedral which has Romanesque and Gothic architecture, plus the tomb of King Edward II. The National Waterways Museum celebrates the city's industrial past with canal boats and interactive displays.

Whitehouse Hotel, Worcester

The premier hotel right in the heart of the historic city centre of Worcester offering quintessential English charm coupled with modern convenience. With 84 en-suite bedrooms boasting power showers, toiletries, and comfortable beds. Foregate's brasserie offers a choice of delicious British and international dishes with a menu that is changed to guarantee freshness and a great choice,

Price Includes:

All coach travel/En-suite accommodation/Dinner, Bed & Breakfast/ Time at leisure Worcester on Saturday and Gloucester on Sunday

Departure Dates

March 28th	2 days	£145
September 19th	2 days	£155
November 28th	2 days	£155
Single Supplement		£25



Yorkshire Highlights

Cornmill Lodge Hotel

The Corn Mill Lodge Hotel - Leeds, was completed in 1998, the design of the hotel was based on an original Corn Mill that occupied the site. Floral displays and patio area make it one of the most attractive hotels in Leeds. As a family run hotel in Leeds, we feel we can offer our guests the personal attention they deserve. We have 76 en-suite rooms available including tea and coffee making facilities, wireless internet access, hairdryer, TV inc Freeview channels, opening window and individually controlled heating. With a 100 seat restaurant, serving traditional English food, to the best food on offer from the Mediterranean this is the ideal base.

Price Includes:

All coach travel/En-suite accommodation/Dinner, Bed&Breakfast/Excursions

Departure Date

August 31st	5 days	£350
October 19th	5 days	£350
Single Supplement	£80	



Excursions for the Cornmill Lodge Hotel will be.

York Harrogate Leeds

Festive Treats



Christmas at Windsor

Windsor is a historic market town in the Royal Borough of Windsor and Maidenhead in Berkshire, England. It is the site of Windsor Castle, one of the official residences of the British Monarch. Christmas arrives after there's a visit to the amazing Windsor Castle, the family home to British Kings and Queens for over 1,000 years. The size of the Castle is breathtaking, in fact it is the largest and oldest occupied Castle in the world. Christmas is an especially magical time of the year to visit, when the State Apartments are adorned with glittering decorations, trees and lights to celebrate the festive season. Each year the highlight is the magnificent 20 foot high Nordmann fir Christmas tree on display decked from top to bottom with twinkling lights and festive decorations.



Overnight hotel

Hotel confirmed 4 weeks before departure. Comfortable en-suite accommodation with hair dryer, television, tea and coffee making facilities.

Price Includes:

All coach travel/En-suite accommodation/Dinner, Bed&Breakfast /Entry to Windsor Castle & State Apartments/ Time at leisure in London

Departure Dates

December 6th	2 days	£170
Single Supplement		£36



Festive Treats

Festival of Light Longleat at Christmas

Make your way to Longleat, where you can enjoy animal encounters from the comfort of your coach on a drive through the famous Safari Park. Then see Longleat House, one of the country's finest examples of Elizabethan architecture, dressed for Christmas. Each year, Longleat's spectacular Festival of Light transforms the park into a captivating illuminated winter wonderland. With a new theme each year, expect the unexpected, magnificent scenery and stunning structures. As well as the impressive illuminations, the ground floor of Longleat House will be decorated for Christmas and there will be attractions in the Main Square. Find the giant Singing Christmas Tree with hundreds of dazzling lights dancing in time to much-loved festive tunes, plus other great Adventure Park attractions. To top it all off at this Christmas spectacular, experience the estate transformed into a glowing winter wonderland, beautiful by daylight but incredible after dark. The display will cover more than 30 acres, handmade on location by a team of highly-skilled craftsmen.

Overnight hotel

Hotel confirmed 4 weeks before departure. Comfortable en-suite accommodation with hair dryer, television, tea and coffee making facilities.

Price Includes:

All coach travel/En-suite accommodation/Dinner, Bed & Breakfast /Entry to the Safari Drive Through & main square attractions and Festival of Lights/ Time at leisure in Bristol



Departure Dates

December 6th	2 days	£205
Single Supplement		£36



Festive Treats

London Christmas Shopping



Offering the perfect opportunity to get away and explore. Time for shopping and purchasing Christmas gifts or treating yourself. Visit the museums to take in some culture. Or enjoy the Winter Wonderland in the heart of London in Hyde Park, immerse yourself in all things festive. Offering a wide variety of attractions, activities, entertainment, food, drinks and so much more, we guarantee there's something for everyone! As it becomes dark Hyde Park is transformed by thousands of sparkling lights so grab your mulled wine, hot chocolate or stein of Bavarian beer and join in the festive fun.

Winter Wonderland must be pre-booked, entry at peak times and access to some activities requires a paid-for ticket. Please do not book your tickets until you have checked with our office to make sure the tour is definitely running.

Overnight stay Hotel (outskirts of London)

A welcoming hotel with comfortable en-suite bedrooms with television, telephone, tea/coffee making facilities and hairdryer.



Price Includes:

All coach travel/En-suite accommodation/Bed & Breakfast
Time at leisure in London

Departure Dates

December 5th	2 days	£145
Single Supplement		£35



Festive Breaks & Christmas Parties

Join us for a Christmas break at your favourite destination. It's the season to eat, drink and be merry.



Queens Hotel, Eastbourne Festive Sparkle

November 6th	4 days	£290
Single Supplement		£27



Anchorage Hotel, Babbacombe Christmas Party

Bristol on return journey		
December 4th	3 days	£170



Ashley Court Hotel, Torquay Christmas Party

Bristol on return journey		
November 6th	3 days	£165
November 27th	3 days	£165
December 4th	3 days	£165



Ashley Court Hotel, Torquay Christmas Party

December 11th	3 days	£160
Incl Sunday Lunch (no Bristol on ret Journey)		



Derwent Hotel, Torquay Weekend Festive Break

Bristol on return journey		
December 4th	4 days	£245



New Ocean Hotel, Weston Super Mare Christmas Party Weekend

November 27th	4 days	£325
Free bar 6pm - 10pm every evening		



Xmas Shopping Weekends



Early booking is essential to avoid disappointment. Please note the information and dates on the Christmas Markets and events are subject to change and we cannot be held responsible for events being cancelled or altered but will be in contact once we are aware of any changes.

To assist with costs, overnight stay hotel meals are designed to cater for a large group eating together at the same time, choices are basic and limited. This may not be suitable for everyone. Most hotels would have an alternative option via a bar menu or room service to purchase at your own expense should the inclusive meal not meet your personal preference.

Trafford Centre & Manchester

Hotel to be confirmed (not city centre)		
November 15th	2 days	£99
Single Supplement		£28
December 6th	2 days	£99
Single Supplement		£28



Gloucester & Worcester Xmas Shopping

November 28th	2 days	£155
Single Supplement		£25

London Christmas Shopping

Overnight stay hotel DB&B (Outskirts of London)		
December 5th	2 days	£205
Single Supplement		£35



Festival of Light at Christmas

Overnight stay hotel DB&B		
Includes entry to Safari Drive through , Main Square attractions and Festival of Light		
December 6th	2 days	£205
Single Supplement		£35

Christmas at Blenheim Palace

Overnight stay at hotel DB&B		
Includes the Light Trail		
December 11th	2 days	£230
Single Supplement		£37



Christmas at Windsor Castle

Overnight stay at hotel DB&B		
Includes entry to Windsor Castle & state apartments		
December 6th	2 days	£170
Single Supplement		£36





Turkey & Tinsel and Holly & Mistletoe and Mistletoe & Wine



We have a choice of resorts to enjoy a festive break. Offering a varied itinerary which could include tea & mince pies, traditional Christmas dinner, bingo or quizzes, festive entertainment, fancy dress or even a visit from Santa if you've been good
Single and sea view supplements as they are not listed below.

Haddon Hall, Eastbourne

October 19th	5 days	£410
November 2nd	5 days	£410
November 13th	4 days	£300

Savoy Hotel, Skegness

October 26th	5 days	£410
--------------	--------	------



Auckland Hotel, Morecambe

November 2nd	5 days	£390
--------------	--------	------

Parkhouse Hotel, Blackpool

November 2nd	5 days	£420
--------------	--------	------

Sandringham Hotel, Weston Super Mare

November 2nd	5 days	£300
--------------	--------	------

Eliot Hotel, Newquay

November 2nd	5 days	£300
--------------	--------	------



Marine Hotel, Paignton

November 6th	4 days	£300
November 23rd	5 days	£380
December 11th	4 days	£265

Queens Hotel, Eastbourne

November 6th	4 days	£290
--------------	--------	------



Crown Hotel, Weymouth

November 9th	5 days	£360
December 7th	5 days	£360

Merrion Hotel, Llandudno

November 9th	5 days	£500
--------------	--------	------

Clarence Hotel, Tenby

November 9th	5 days	£380
--------------	--------	------

Ashley Court Hotel, Torquay

November 9th	5 days	£275
November 23rd	5 days	£280
November 27th	3 days	£165
December 4th	3 days	£165
December 11th	3 days	£160 <small>inc Sun Lun</small>



New Ocean Hotel, Weston Super Mare

November 13th	4 days	£320
November 27th	4 days	£325

Royal Hotel, Weymouth

November 13th	4 days	£270
November 16th	5 days	£350
Includes 1 festive themed lunch		



Smiths Hotel, Weston Super Mare

November 16th	5 days	£310
---------------	--------	------

Cumbria Grand Hotel, Cumbria

November 16th	5 days	£400
---------------	--------	------

Hydro Hotel, Llandudno

November 16th	5 days	£340
Includes 1 festive themed lunch		



Pontins Sand Bay

November 16th	5 days	£215
---------------	--------	------

Babbacombe Hotel, Babbacombe

November 20th	4 days	£250
December 4th	4 days	£250

Royal Grosvenor Hotel, Weston Super Mare

November 20th	4 days	£280
---------------	--------	------



Rosemundy House Hotel, St Agnes

November 23rd	5 days	£410
---------------	--------	------

Durley Dean Hotel, Bournemouth

November 23rd	5 days	£340
---------------	--------	------

Derwent Hotel, Torquay

November 23rd	5 days	£315
December 4th	4 days	£245

Riviera Hotel, Torquay

November 30th	5 days	£270
December 11th	4 days	£200
December 14th	5 days	£270



Four Oaks Hotel, Llandudno

November 30th	5 days	£380
---------------	--------	------

Cavendish Hotel, Exmouth

November 30th	5 days	£310
Includes 1 festive themed lunch		

Anchorage Hotel, Babbacombe

December 4th	3 days	£170
December 14th	5 days	£220

Palace Hotel, Paignton

December 4th	4 days	£280
--------------	--------	------

Rob Roy Hotel, Scotland

December 6th	6 days	£370
--------------	--------	------



We have great pleasure in offering you a selection of hotels for you to have a relaxing and enjoyable Christmas. Individual arranged entertainment programmes at each hotel that combine both modern and traditional Christmas festivities such as candlelit dinners, party games, bingo and a whole lot more. Each hotel will have a different itinerary but we can guarantee that your Christmas package will include dinner, bed & breakfast and Christmas entertainment. There will be one short, local excursion during the Christmas period which may vary due to the hotel's itinerary and seasonal events in the area. Please enquire for single and sea view supplements for Christmas, Twixmas and the New Year as they are not listed below. We advise early booking for these popular dates.

Christmas



December 23rd 5 days

New Ocean Hotel, Weston Super Mare	£680	Full Board, Free bar 6pm-10pm
Merrion Hotel, Llandudno	£685	Full Board
Ashley Court, Torquay	£520	Full Board
Anchorage Hotel, Babbacombe	£520	Full Board
Riviera Hotel, Torquay	£550	Full Board



Twixmas

It's the perfect opportunity for a Christmas break, when you can spend quality time in a relaxed atmosphere. A time to recharge in between the Christmas and New Year festivities.

December 27th 4 days

New Ocean Hotel, Weston Super Mare	£315
Full Board. Includes free bar 6pm-10pm	
Ashley Court, Torquay	£215
Marine Hotel, Paignton	£320
Anchorage Hotel, Babbacombe	£260
Palace Hotel, Paignton	£310
Riviera Hotel, Torquay	£260



New Year

December 29th 5 days

Haddon Hall, Eastbourne	£620
Savoy Hotel, Skegness	£490

December 30th 4 days

Derwent Hotel, Torquay	£440
Riviera Hotel, Torquay	£460
Ashley Court Hotel, Torquay	£385
Crown Hotel, Weymouth	£415
New Ocean Hotel, Weston Super Mare	£550
Includes free bar 6pm-10pm	

Join us to celebrate New Year in style with your family and friends at one of your favourite destinations. Each hotel will have their own festive entertainment package which may include a drinks reception, gala dinner, fancy dress and afternoon games. Some breaks may be half board while others are full board. Please enquire about single and sea view supplements for all of the New Year packages as they are not listed.



Conditions Of Booking

These are the booking conditions under which BRENT THOMAS COACHES LTD (herein after referred to as BTC) accept bookings for all holidays. Please read this carefully.

WHY SHOULD I READ THIS?

Because it is very important. These terms and conditions form a key part of our agreement with you and forms the basis of a legally binding contract between you as the lead name making the booking (and anyone else in your party) and us Brent Thomas Coaches Ltd. When you make this booking as lead name, you undertake that you have the authority to accept and do accept, on behalf of your party the terms of these booking conditions, which are governed by English Law, and the non exclusive jurisdiction of the English courts. Please take time to read through them and you will see set out in simple terms what responsibilities we both have when entering into a contract. BTC LTD reserve the right to refuse (without explanation) to accept any booking.

HOW AND WHEN DO I MAKE THIS CONTRACT WITH YOU?

The contract is made with us when we are in receipt of your £40 deposit or £150 for European and Jersey per person and we issue a confirmation of booking. We will send you a confirmation of your booking usually within 48 hours of receipt. Please check this confirmation very carefully to ensure all the information is correct and notify us as soon as possible of any errors.

HOW IS MY HOLIDAY MONEY PROTECTED?

In accordance with the EC Directive 90/314/EC all passengers booking with Brent Thomas Coaches Ltd are fully protected for the initial deposit and subsequently the balance of all monies paid to us, including repatriation if required, arising from cancellation or curtailment of their travel arrangements due to the insolvency of Brent Thomas Coaches Ltd, the money is held in a trust account at Lloyds TSB Bank, Market Street, Pontypridd.

To comply with the Package Travel, Package Holidays and Package Tours Regulations 1992, we are members of BAWTA Repatriation Scheme. This guarantees that you will be returned to your departure point in the UK if we become insolvent whilst you are outside the UK on any tour in this brochure except in the case of packages taken wholly within the UK.

WHEN DO I NEED TO PAY FOR MY HOLIDAY AND HOW MUCH?

At the time of booking you will need to pay a deposit for each person in your party. The balance is due 6 weeks prior to departure, unless travelling overseas. If you book within our balance due period, you will need to pay the total holiday cost at the time of booking. If you do not pay the outstanding balance for your holiday on time we shall cancel your booking and retain your deposit. Where optional items are purchased as part of the tour package these are payable on the balance due date except where items have been specifically purchased for you. In this case the cost will be payable at a separate date notified to you and will not normally be refundable unless we obtain a refund from the supplier we use.

CAN YOU CHANGE THE PRICE OF MY HOLIDAY AFTER YOU HAVE ISSUED THE CONFIRMATION OF BOOKING?

We guarantee that once you have booked your holiday, the price will not be changed.

CAN I CHANGE MY HOLIDAY ARRANGEMENTS?

After we have issued our booking confirmation we will do our best to accommodate any changes you may want to make but we cannot guarantee to do so. Any changes must be notified to us in writing and signed by the person who signed the booking form. If we are able to make the changes, an amendment fee of £10 per booking per occasion will be payable, plus any additional charge for the facilities requested. Any significant alteration after the balance due date will be treated as a cancellation of the original booking. A significant alteration would include a change of departure date, holiday or hotel, or number of people travelling.

CAN I TRANSFER MY BOOKING TO SOMEONE ELSE?

If any person on a package holiday is prevented from travelling, the company will agree to that person's booking being transferred to another person who satisfies all the conditions applicable to the package, subject to both persons accepting joint and several liability for full payment of the package price and the company's charge for confirming the transfer and any additional costs arising from the transfer. The company must be given reasonable notice of the transfer request, which is considered to be at least 14 days prior to the outward departure date and a £10 administration charge will be payable.

WHAT HAPPENS IF I CANCEL MY HOLIDAY?

You or any member of your party may cancel at any time, provided that the cancellation is made by the person who made the booking and is communicated to our office in writing. If cancellation is due to events which are the fault or wilful decision of the customer, BTC Ltd. shall be entitled to retain as much of the payment as is needed to cover its reasonable costs and losses caused by withdrawal. BTC Ltd. shall take all reasonable steps to keep its costs to a minimum. Your cancellation will take effect from the date we receive written confirmation of your cancellation. You must also return any tickets or vouchers that you have received. A reduction in room occupancy may increase the charges for the remaining passengers by the application of supplements for low occupancy of rooms.

SCALE OF CANCELLATION CHARGES

Period before departure within which written % cancellation of holiday is received	Amount of cancellation charge as a %
More than 42 days	Deposit
42 - 29 days	50%
28 - 15 days	85%
14 - 1 days	100%
Departure date or later including voluntary termination whilst on holiday	100%

WHAT HAPPENS IF YOU CHANGE OR CANCEL MY HOLIDAY?

In view of the fact that brochures are necessarily prepared sometime in advance, advertised facilities may be changed. Therefore changes may be made to the particulars contained in this brochure at any time before the contract with you is made. In these circumstances we will notify you of such changes prior to confirmation of your booking. Most of these changes are likely to be minor and we will do our best to keep you informed. If, after booking and before departure, we make a significant change to your holiday you will have the option of withdrawing from the holiday without penalty or alternatively you may transfer to another holiday without paying an administration fee. A significant change would include a change in departure date, location of resort or quality of hotel (excluding single overnight hotels on touring holidays), cancellation by BTC Ltd because of insufficient numbers (below twenty). On all our holidays to the continent we reserve the right to use either a ferry or the Channel Tunnel for the short crossing between England and France.

If you withdraw from the holiday because we have made a significant change or if we have to cancel your holiday for any reason other than non-payment by you, we will offer you the choice of:- A comparable replacement holiday if available OR a replacement holiday of lower quality together with a refund of the price difference OR a full refund of the money you have paid. When we have notified you of the changes and options available, you must tell us your decision as soon as possible and within any timescale we may need to set bearing in mind the need to safeguard the holiday arrangements of other customers.

WHAT DO I NEED TO DO IF I HAVE TO COMPLAIN?

If you have a complaint during your holiday, you should tell our driver / representative at the earliest opportunity so that they can do their utmost to resolve the problem immediately. If, on your return from holiday, you remain dissatisfied you should write within 14 days to our office. In your letter you will need to tell us the name of the holiday hotel and the departure date. In the event that you do not tell us in that period this may affect the company's ability to investigate complaints and may impact on the way that your complaint is dealt with.

HEALTH AND SAFETY ON HOLIDAY

Some people may be at risk from discomfort or deep vein thrombosis (DVT) if they remain immobile on a journey for a long period of time. If you are planning to undertake a coach journey of more than 3 hours you should consult your doctor if you have ever had DVT or pulmonary embolism, a family history of clotting conditions, cancer or treatment for cancer, a stroke, heart or lung disease of if you have had major surgery in the last 3 months. During the journey we will provide comfort stops as frequently as possible. During these stops you are encouraged to get off the coach and walk around. Exercise reduces discomfort, which may be caused by periods of immobility.

NO SMOKING POLICY

We operate a strict no smoking policy on all our coaches. Comfort stops are made en-route. The smoking policy of other carriers and suppliers will vary. Please be aware that some hotels are also non-smoking, you must abide by their regulations.

PICK UP POINTS, ITINERARIES, TRAVEL DOCUMENTS AND PASSPORTS

You are responsible for ensuring that you are at the correct departure point at the correct time, with the correct documents and we cannot be held liable for any loss or expense suffered by you or your party because of an incorrect passport or late arrival at the departure point. Approximately one week prior to departure we will send you a confirmation of your pick-up point, seat numbers and time of pick-up together with luggage labels. Certain travel documents may have to be retained by us, your driver will then issue them to you at the relevant time.

If you are a British Citizen travelling outside the United Kingdom you must have a full UK passport valid for a minimum of six months after your scheduled date of return. Non-UK citizens must seek passport and visa advice from the consulates of the countries you plan to visit prior to making a booking for one of our holidays. The name on the passport must match the name on the ticket. If someone in your party changes name after the booking is made, you must tell us immediately so that we can issue the ticket in the new name.

Brent Thomas Coaches Ltd reserves the right to modify itineraries to conform with requests from the competent authorities in the United Kingdom and any other sovereign state through which the tour will operate. Any changes will be notified as soon as possible. Included excursions are detailed on the relevant brochure page and refunds will not be made for any excursion not taken. Admission fees to buildings, grounds etc are not included in the price of the holiday unless otherwise stated on the relevant page.

WHAT HAPPENS IF I AM DELAYED?

Your travel insurance may cover you for some delays. For full details please check your insurance schedule.

DO I NEED TO TAKE OUT TRAVEL INSURANCE?

We strongly advise you to take out travel insurance to cover Covid, medical and repatriation costs, personal injury, loss of baggage and cancellation charges. If you do not have adequate insurance and require our assistance whilst on holiday, we reserve the right to reclaim from you any medical, repatriation or other expenses that we may incur on your behalf, which would otherwise have been met by insurers.

DATA PROTECTION ACT

In order to process your booking and to ensure that your travel arrangements run smoothly and meet your requirements we need to use the information you provide such as name, address and special needs etc. We take full responsibility for ensuring that proper measures are in place to protect your information. We must pass the information onto the relevant suppliers, such as hotels etc. The information may also be supplied to public authorities such as customs / immigration if required by them, or as required by law. If we cannot pass this information on to the relevant suppliers, we cannot provide your booking. In making this booking, you consent to this information being passed on to the relevant persons. Your data controller is Brent Thomas Coaches Ltd. You are entitled to a copy of your information held by us. If you would like to see this please contact us. We retain your full contact details and other information in secure files and electronic storage facilities. We may use this information to contact you by mail, telephone or electronic means.



Book in for
MOT's and repair work
Class 4, 5 & 7
Tel 01443 431240
Slots available
@ Brent Thomas Coaches

**BRENT THOMAS COACHES LTD
FOUNDRY ROAD INDUSTRIAL ESTATE
TONYPANDY
RHONDDA CYNON TAF
CF40 2XD**

TEL: 01443 431240

**E-mail : info@brentthomascoaches.com
www.brentthomascoaches.com**

***Brent Thomas Coaches Ltd
Company Registration Number 5749506***